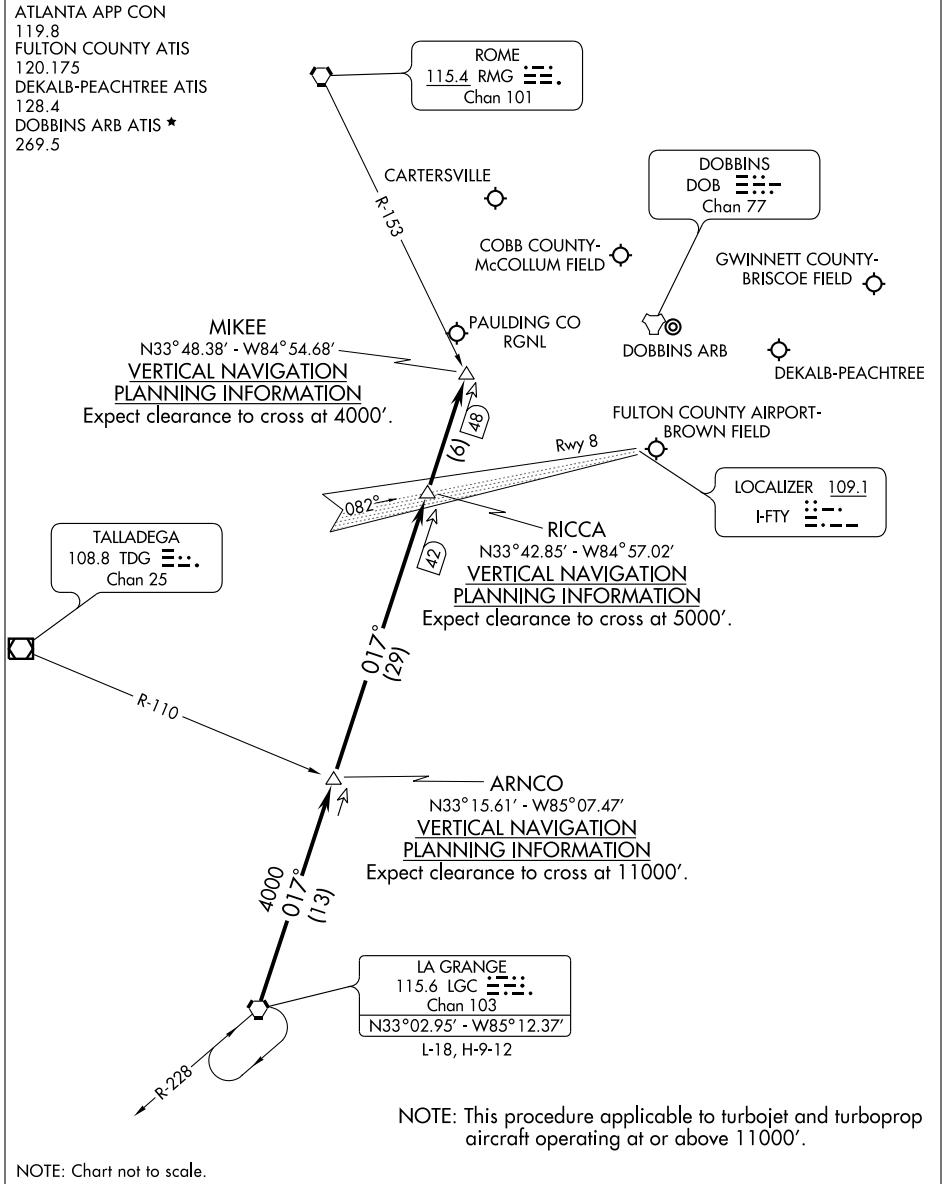


ATLANTA APP CON  
119.8  
FULTON COUNTY ATIS  
120.175  
DEKALB-PEACHTREE ATIS  
128.4  
DOBBINS ARB ATIS \*  
269.5



NOTE: Chart not to scale.

From over LGC VORTAC via the LGC R-017 to MIKEE INT. Expect radar vectors to final approach course after MIKEE INT.

SE-4, 22 OCT 2009 to 19 NOV 2009

SE-4, 22 OCT 2009 to 19 NOV 2009