

(AWSON.AWSON1) 09183

# AWSON ONE ARRIVAL

ST-469 (FAA)

ATLANTA, GEORGIA

ATLANTA APP CON  
126.975 239.275  
FULTON COUNTY ATIS  
120.175  
DEKALB PEACHTREE ATIS  
128.4  
DOBBINS ARB ATIS ★  
269.5

VOLUNTEER  
116.4 VXV   
Chan 111  
N35°54.29' - W83°53.68'  
L-25, H-9-12

SNOWBIRD  
108.8 SOT   
Chan 25  
N35°47.41' - W83°03.14'  
L-25, H-9-12

SUGARLOAF MOUNTAIN  
112.2 SUG   
Chan 59  
N35°24.39' - W82°16.12'  
L-25

HARRIS  
109.8 HRS   
Chan 35

CERAY  
N34°59.97' - W83°41.55'

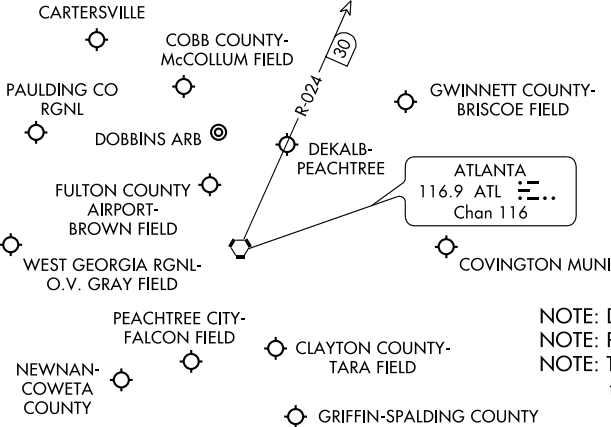
FOOTHILLS  
113.4 ODF   
Chan 81  
N34°41.75' - W83°17.86'  
L-25, H-9-12

AWSON  
N34°28.82' - W83°59.06'

DEHAN  
N34°19.00' - W84°04.30'  
**NAVIGATIONAL PLANNING INFORMATION**  
All aircraft expect clearance to cross at 8000'.

DLUTH  
N34°05.26' - W84°11.61'

ELECTRIC CITY  
108.6 ELW   
Chan 23



NOTE: DME Required.  
NOTE: RADAR required SOT transition.  
NOTE: This procedure applicable to turbojet and turboprop aircraft.

NOTE: Chart not to scale.

(NARRATIVE ON FOLLOWING PAGE)

AWSON ONE ARRIVAL  
(AWSON.AWSON1) 09183

ATLANTA, GEORGIA

SE-4, 22 OCT 2009 to 19 NOV 2009

SE-4, 22 OCT 2009 to 19 NOV 2009