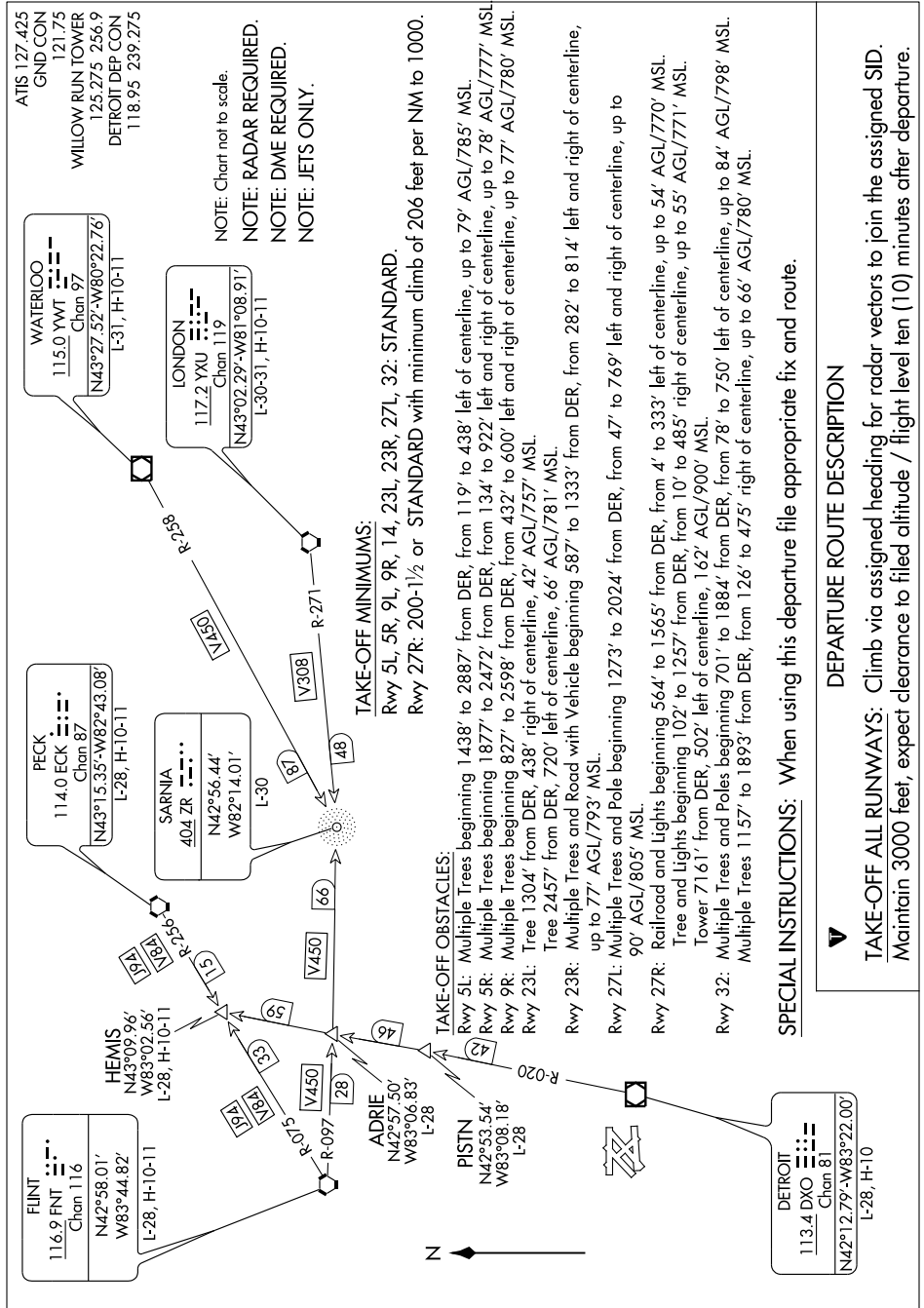


ST. CLAIR THREE DEPARTURE

EC-1, 22 OCT 2009 to 19 NOV 2009



ST. CLAIR THREE DEPARTURE

NOTE: Chart not to scale.
 NOTE: RADAR REQUIRED.
 NOTE: DME REQUIRED.
 NOTE: JETS ONLY.

TAKE-OFF MINIMUMS:

Rwy 5L, 5R, 9L, 9R, 14, 23L, 23R, 27L, 32: STANDARD.
 Rwy 27R: 200-1/2 or STANDARD with minimum climb of 206 feet per NM to 1000.

TAKE-OFF OBSTACLES:

Rwy 5L: Multiple Trees beginning 1438' to 2887' from DER, from 119' to 438' left of centerline, up to 79' AGL/785' MSL.
 Rwy 5R: Multiple Trees beginning 1877' to 2472' from DER, from 134' to 922' left and right of centerline, up to 78' AGL/777' MSL.
 Rwy 9R: Multiple Trees beginning 827' to 2598' from DER, from 432' to 600' left and right of centerline, up to 77' AGL/780' MSL.
 Rwy 23L: Tree 1304' from DER, 438' right of centerline, 42' AGL/757' MSL.
 Tree 2457' from DER, 720' left of centerline, 66' AGL/781' MSL.
 Rwy 23R: Multiple Trees and Road with Vehicle beginning 587' to 1333' from DER, from 282' to 814' left and right of centerline, up to 77' AGL/793' MSL.
 Rwy 27L: Multiple Trees and Pole beginning 1273' to 2024' from DER, from 47' to 769' left and right of centerline, up to 90' AGL/805' MSL.
 Rwy 27R: Railroad and Lights beginning 564' to 1565' from DER, from 4' to 333' left of centerline, up to 54' AGL/770' MSL.
 Tree and Lights beginning 102' to 1257' from DER, from 10' to 485' right of centerline, up to 55' AGL/771' MSL.
 Tower 7161' from DER, 502' left of centerline, 162' AGL/900' MSL.
 Rwy 32: Multiple Trees and Poles beginning 701' to 1884' from DER, from 78' to 750' left of centerline, up to 84' AGL/798' MSL.
 Multiple Trees 1157' to 1893' from DER, from 126' to 475' right of centerline, up to 66' AGL/780' MSL.

SPECIAL INSTRUCTIONS: When using this departure file appropriate fix and route.

DEPARTURE ROUTE DESCRIPTION

TAKE-OFF ALL RUNWAYS: Climb via assigned heading for radar vectors to join the assigned SID. Maintain 3000 feet, expect clearance to filed altitude / flight level ten (10) minutes after departure.

EC-1, 22 OCT 2009 to 19 NOV 2009