

(RID4.RID) 09015

RICHMOND FOUR DEPARTURE

SL-467 (FAA)

DETROIT/ WILLOW RUN (YIP)
DETROIT, MICHIGAN

ATIS 127.425
GND CON
121.75
WILLOW RUN TOWER
125.275 256.9
DETROIT DEP CON
118.95 239.275



DETROIT	
113.4 DXO	
Chan 81	
N42°12.79' - W83°22.00'	
L-28, H-10	

CAVVS
N41°41.04'
W83°34.14'
L-28

SANDUSKY	
109.2 SKY	
Chan 29	

WATERVILLE	
113.1 VVV	
Chan 78	
N41°27.09'	
W83°38.32'	
L-28, H-10	

SPECIAL INSTRUCTIONS:

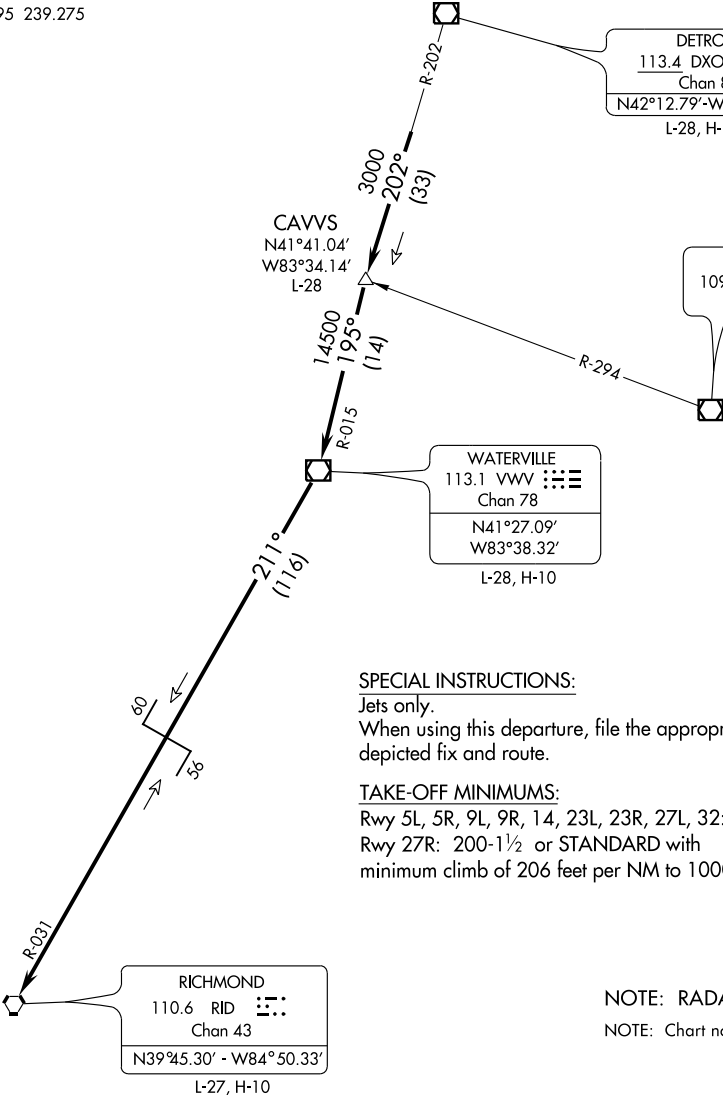
Jets only.
When using this departure, file the appropriate depicted fix and route.

TAKE-OFF MINIMUMS:

Rwy 5L, 5R, 9L, 9R, 14, 23L, 23R, 27L, 32: STANDARD.
Rwy 27R: 200-1½ or STANDARD with minimum climb of 206 feet per NM to 1000.

NOTE: RADAR Required.

NOTE: Chart not to scale.



EC-1, 22 OCT 2009 to 19 NOV 2009

EC-1, 22 OCT 2009 to 19 NOV 2009

(NARRATIVE ON FOLLOWING PAGE)

RICHMOND FOUR DEPARTURE

(RID4.RID) 09015

DETROIT, MICHIGAN
DETROIT/ WILLOW RUN (YIP)