

DETROIT, MICHIGAN

AL-467 (FAA)

LOC/DME I-YIP 109.5 Chan 32	APP CRS 053°	Rwy Idg 5R 7526 5L 5995 TDZE 715 716 Apt Elev 716 716
---	------------------------	--

ILS or LOC RWY 5R

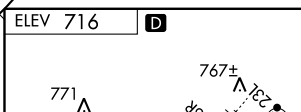
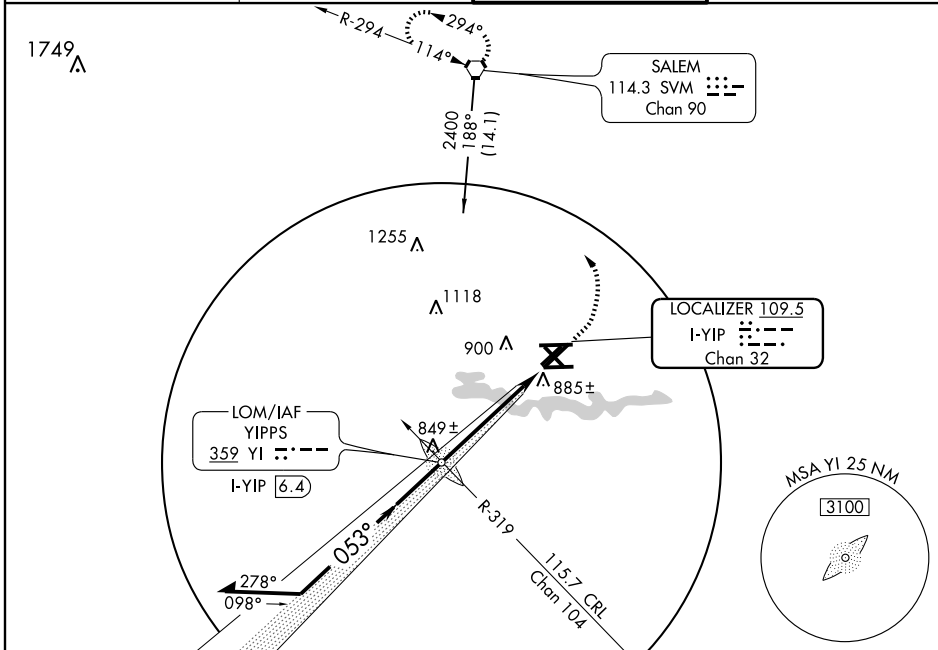
DETROIT/WILLOW RUN (YIP)

▼ For inoperative MALSR increase S-LOC-5R Cat A and B; visibility to RVR 5000. Inoperative table does not apply to S-ILS all cats.

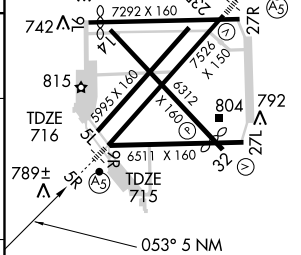


MISSED APPROACH: Climb to 1200, then climbing left turn to 3000 direct SVM VORTAC and hold.

ATIS 127.425	DETROIT APP CON 118.95 363.2	WILLOW RUN TOWER 125.275 256.9	GND CON 121.75
------------------------	--	--	--------------------------



Remain within 10 NM	YIPPS LOM/INT I-YIP 6.4	1200	3000	SVM 114.3
2400	2378	↑	↻	114.3
GS 3.00° TCH 57	2400	I-YIP 1.4		



CATEGORY	A	B	C	D
S-ILS 5R	965/40		250 (300-¾)	
S-LOC 5R	1120/40		405 (500-¾)	
CIRCLING	1200-1	484 (500-1)	1200 - 1½ 484 (500-1½)	1280-2 564 (600-2)
SIDESTEP RWY 5L	1120-1	404 (500-1)	1120-1½ 404 (500-1½)	1120-2 404 (500-2)

FAF to MAP 5 NM

Knots	60	90	120	150	180
Min:Sec	5:00	3:20	2:30	2:00	1:40

DETROIT, MICHIGAN
Amdt 15 09295

42°14'N · 83°32'W

DETROIT/WILLOW RUN (YIP)

ILS or LOC RWY 5R

EC-1, 22 OCT 2009 to 19 NOV 2009

EC-1, 22 OCT 2009 to 19 NOV 2009