

# RNAV (GPS) RWY 32

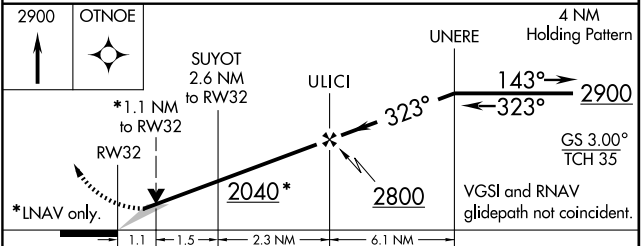
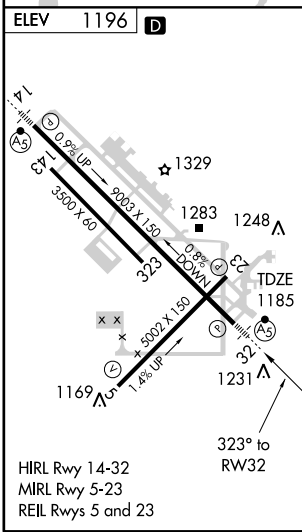
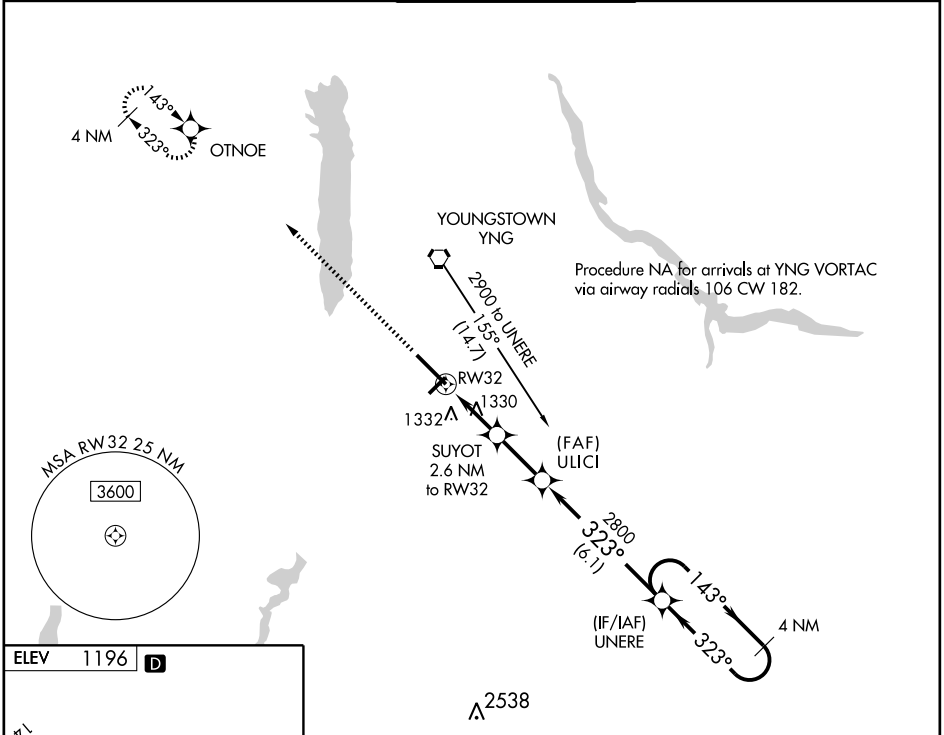
YOUNGSTOWN-WARREN RGNL (YNG)

WAAS CH <b>97406</b> <b>W32A</b>	APP CRS <b>323°</b>	Rwy Idg <b>9003</b> TDZE <b>1185</b> Apt Elev <b>1196</b>
--	------------------------	---

▼ For inoperative MALSR, increase LPV all Cats visibility to RVR 5000 and LNAV Cat D visibility to RVR 6000. For uncompensated Baro-VNAV systems, LNAV/VNAV NA ASR below -17°C (2°F) or above 46°C (114°F). DME/DME RNP-0.3 NA.

MALSR MISSED APPROACH: Climb to 2900 direct OTNOE and hold.

ATIS <b>123.75</b>	YOUNGSTOWN APP CON * <b>133.95 322.3</b>	YOUNGSTOWN TOWER <b>119.5 263.0</b>	GND CON <b>121.9 275.8</b>	CLNC DEL <b>118.25</b>
-----------------------	---	--	-------------------------------	---------------------------



CATEGORY	A	B	C	D
LPV DA	1457/24 272 (300-1/2)			
LNAV/ VNAV DA	1638/60 453 (500-1 1/2)			
LNAV MDA	1580/24 395 (400-1/2)		1580/50 395 (400-1)	
CIRCLING	1640-1 444 (500-1)	1660-1 464 (500-1)	1660-1 1/2 464 (500-1 1/2)	1760-2 564 (600-2)

EC-2, 22 OCT 2009 to 19 NOV 2009

EC-2, 22 OCT 2009 to 19 NOV 2009