

(YKM5.YKM) 03135

YAKIMA FIVE DEPARTURE

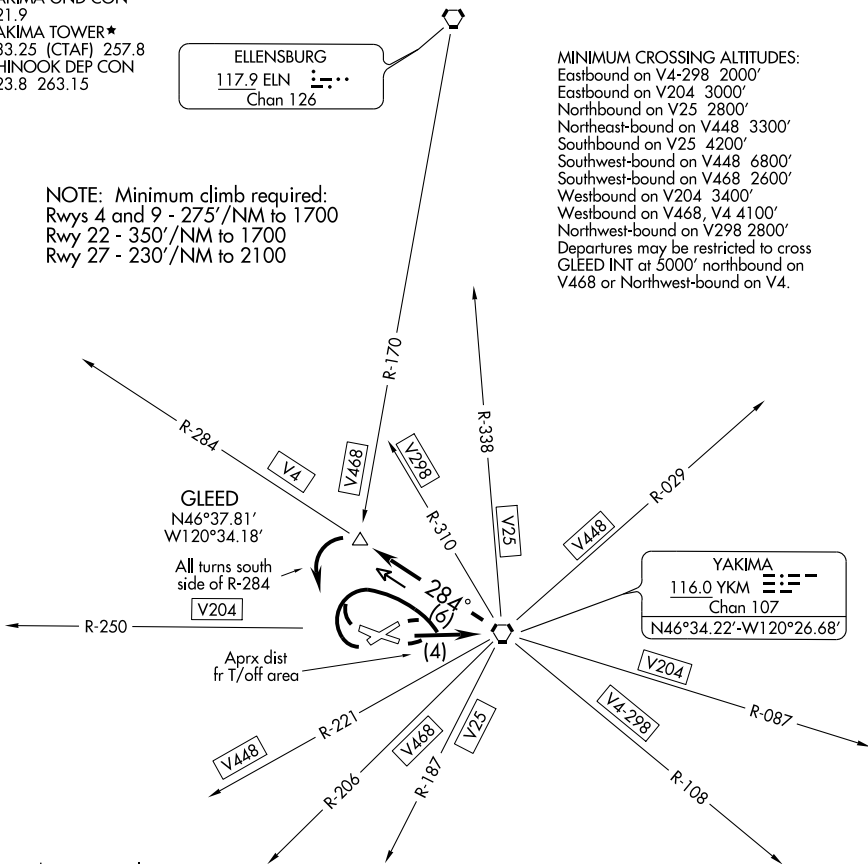
YAKIMA AIR TERMINAL/MCALLISTER FIELD (YKM)
SL-465 (FAA) YAKIMA, WASHINGTON

ATIS 125.25
YAKIMA GND CON
121.9
YAKIMA TOWER*
133.25 (CTAF) 257.8
CHINOOK DEF CON
123.8 263.15

ELLENSBURG
117.9 ELN
Chan 126

MINIMUM CROSSING ALTITUDES:
Eastbound on V4-298 2000'
Eastbound on V204 3000'
Northbound on V25 2800'
Northeast-bound on V448 3300'
Southbound on V25 4200'
Southwest-bound on V448 6800'
Southwest-bound on V468 2600'
Westbound on V204 3400'
Westbound on V468, V4 4100'
Northwest-bound on V298 2800'
Departures may be restricted to cross
GLEED INT at 5000' northbound on
V468 or Northwest-bound on V4.

NOTE: Minimum climb required:
Rwys 4 and 9 - 275'/NM to 1700
Rwy 22 - 350'/NM to 1700
Rwy 27 - 230'/NM to 2100



NW-1, 22 OCT 2009 to 19 NOV 2009

NW-1, 22 OCT 2009 to 19 NOV 2009

NOTE: Chart not to scale.

DEPARTURE ROUTE DESCRIPTION

TAKE-OFF RUNWAYS 4, 22 or 27: Turn right, thence....

TAKE-OFF RUNWAY 9: Turn left, thence....

....Climb direct YKM VORTAC. Continue climb on YKM R-284 between the VORTAC and GLEED INT., all turns south of the 284 radial, to cross YKM VORTAC at or above (minimum crossing altitudes). Thence via (assigned route).

YAKIMA FIVE DEPARTURE

(YKM5.YKM) 03135

YAKIMA, WASHINGTON
YAKIMA AIR TERMINAL/MCALLISTER FIELD (YKM)