

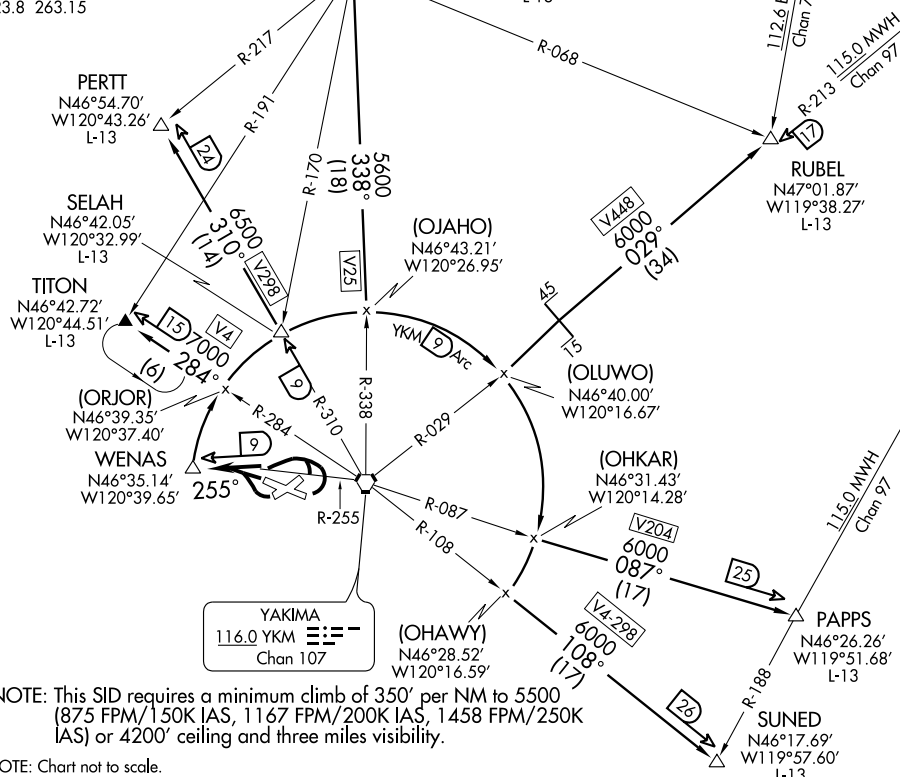
(WENAS5.WENAS) 07298

WENAS FIVE DEPARTURE

YAKIMA AIR TERMINAL/MCALLISTER FIELD (YKM)
SL-465 (FAA) YAKIMA, WASHINGTON

ATIS 125.25
YAKIMA GND CON
121.9
YAKIMA TOWER ★
133.25 (CTAF) 257.8
CHINOOK DEP CON
123.8 263.15

ELLENSBURG
117.9 ELN
Chan 126
N47°01.46'-W120°27.51'
L-13



NW-1, 22 OCT 2009 to 19 NOV 2009

NW-1, 22 OCT 2009 to 19 NOV 2009

NOTE: Chart not to scale.

DEPARTURE ROUTE DESCRIPTION

- TAKE-OFF RUNWAYS 4, 9: Turn left thence...
 - TAKE-OFF RUNWAY 22: Turn right thence....
 - TAKE-OFF RUNWAY 27: Climb runway heading thence....
 - Intercept and proceed via YKM R-255 to the WENAS DME Fix (YKM 255/9) thence via (assigned transition).
 - ELLENSBURG TRANSITION (WENAS5.ELN): From over WENAS DME Fix via 9 DME Arc and V25 to ELN VORTAC.
 - PAPPS TRANSITION (WENAS5.PAPPS): From over WENAS DME Fix via 9 DME Arc and V204 to PAPPS INT.
 - PERTT TRANSITION (WENAS5.PERTT): From over WENAS DME Fix via 9 DME Arc and V298 to PERTT INT.
 - RUBEL TRANSITION (WENAS5.RUBEL): From over WENAS DME Fix via 9 DME Arc and V448 to RUBEL INT.
 - SELAH TRANSITION (WENAS5.SELAH): From over WENAS DME Fix via 9 DME Arc to SELAH INT.
 - SUNED TRANSITION (WENAS5.SUNED): From over WENAS DME Fix via 9 DME Arc and V4 to SUNED INT.
 - TITON TRANSITION (WENAS5.TITON): From over WENAS DME Fix via 9 DME Arc and V4 to TITON INT.
- NOTE: Climb in holding pattern Southeast of TITON INT, left turns, 284° inbound to 7000 feet before proceeding on course.

WENAS FIVE DEPARTURE
(WENAS5.WENAS) 07298

YAKIMA, WASHINGTON
YAKIMA AIR TERMINAL/MCALLISTER FIELD (YKM)