

YAKIMA, WASHINGTON

AL-465 (FAA)

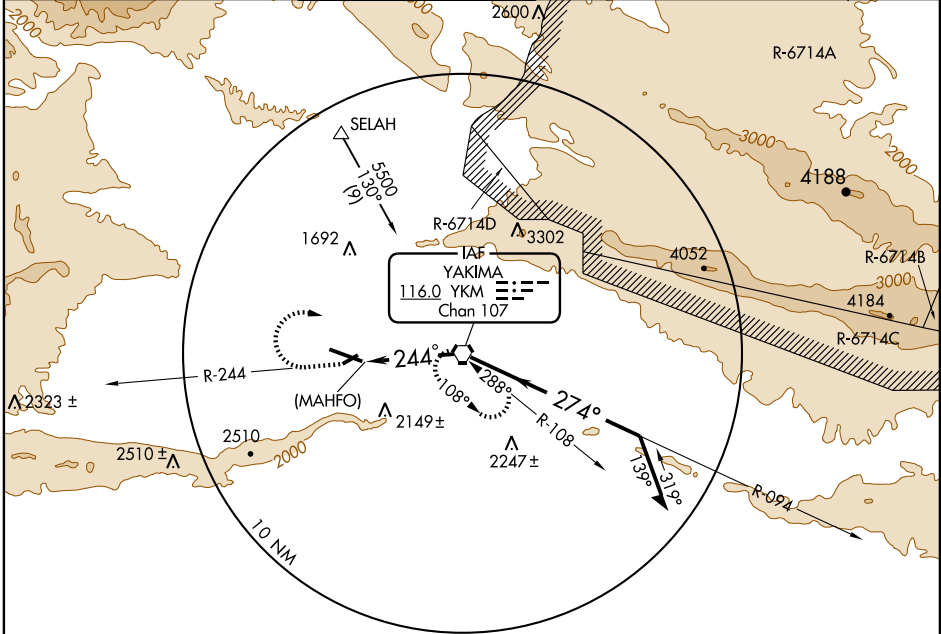
VOR or GPS-A

YAKIMA AIR TERMINAL/MCALLISTER FIELD (YKM)

VORTAC YKM 116.0 Chan 107	APP CRS 244°	Rwy Idg TDZE Apt Elev 1095	N/A N/A 1095
--	------------------------	--	---------------------------

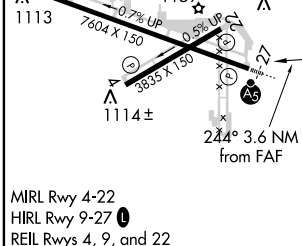
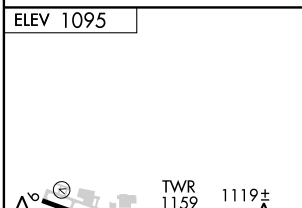
⚠ Circling not authorized South of Rwy 9-27.	MISSED APPROACH: Climb to 2500 via YKM R-244 then climbing right turn to 4000 direct YKM VORTAC and hold.
---	---

ATIS 125.25	CHINOOK APP CON* 123.8 263.15	YAKIMA TOWER* 133.25 (CTAF) 257.8	GND CON 121.9	CLNC DEL 121.9	UNICOM 122.95
-----------------------	---	---	-------------------------	--------------------------	-------------------------



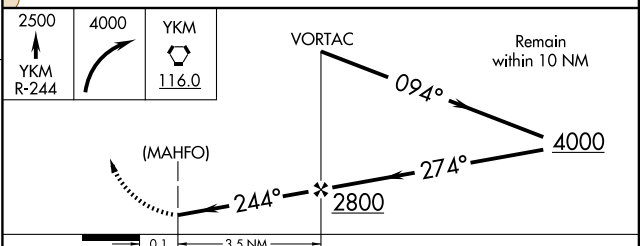
NW-1, 22 OCT 2009 to 19 NOV 2009

NW-1, 22 OCT 2009 to 19 NOV 2009



MIRL Rwy 4-22
HIRL Rwy 9-27
REIL Rwys 4, 9, and 22

FAF to MAP 3.5 NM					
Knots	60	90	120	150	180
Min:Sec	3:30	2:20	1:45	1:24	1:10



CATEGORY	A	B	C	D
CIRCLING	1780-1	685 (700-1)	1780-2 685 (700-2)	1840-2 1/2 745 (800-2 1/2)

YAKIMA, WASHINGTON
Amdt 6 08213

YAKIMA AIR TERMINAL/MCALLISTER FIELD (YKM)
46°34'N-120°33'W
VOR or GPS-A