

RNAV (GPS) RWY 15

WINSTON-SALEM / SMITH REYNOLDS (INT)

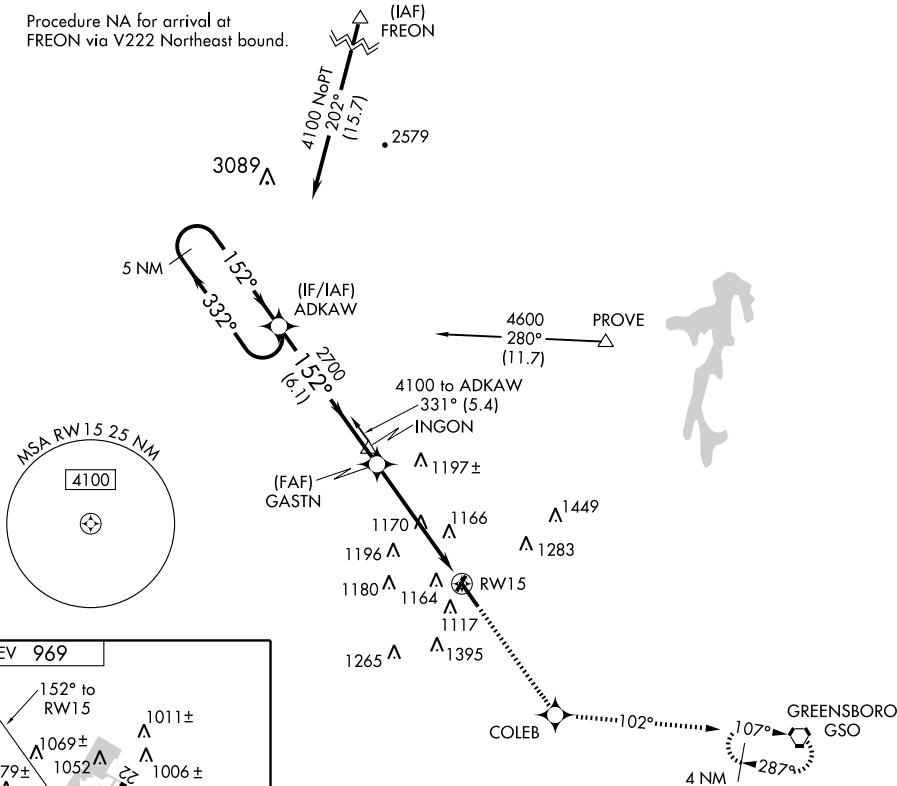
APP CRS 152°	Rwy ldg 6069
	TDZE 968
	Apt Elev 969

▼ DME/DME RNP-0.3 NA. Visibility reduction by helicopters NA. When local altimeter setting not received, use Piedmont Triad Intl altimeter setting and increase all MDA 40 feet and Circling Cat. D visibility ¼ mile.

MISSED APPROACH: Climb to 3000 direct COLEB and via track 102° to GSO VORTAC and hold.

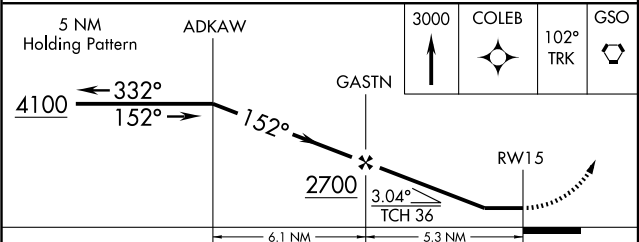
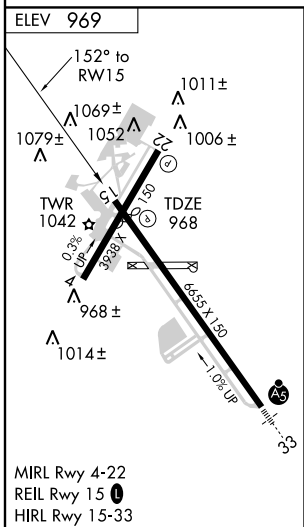
ATIS 121.3	GREENSBORO APP CON 124.35 269.225	WINSTON-SALEM TOWER ★ 123.75 (CTAF) 0 257.8	GND CON 128.25	UNICOM 122.95
----------------------	---	---	--------------------------	-------------------------

Procedure NA for arrival at FREON via V222 Northeast bound.



SE-2, 22 OCT 2009 to 19 NOV 2009

SE-2, 22 OCT 2009 to 19 NOV 2009



CATEGORY	A	B	C	D
LNAV MDA	1420-1	452 (500-1)	1420-1¼ 452 (500-1¼)	1420-1½ 452 (500-1½)
CIRCLING	1480-1 511 (600-1)	1580-1 611 (700-1)	1580-1½ 611 (700-1½)	1740-2¼ 771 (800-2¼)

RNAV (GPS) RWY 15