

QUAKER THREE DEPARTURE

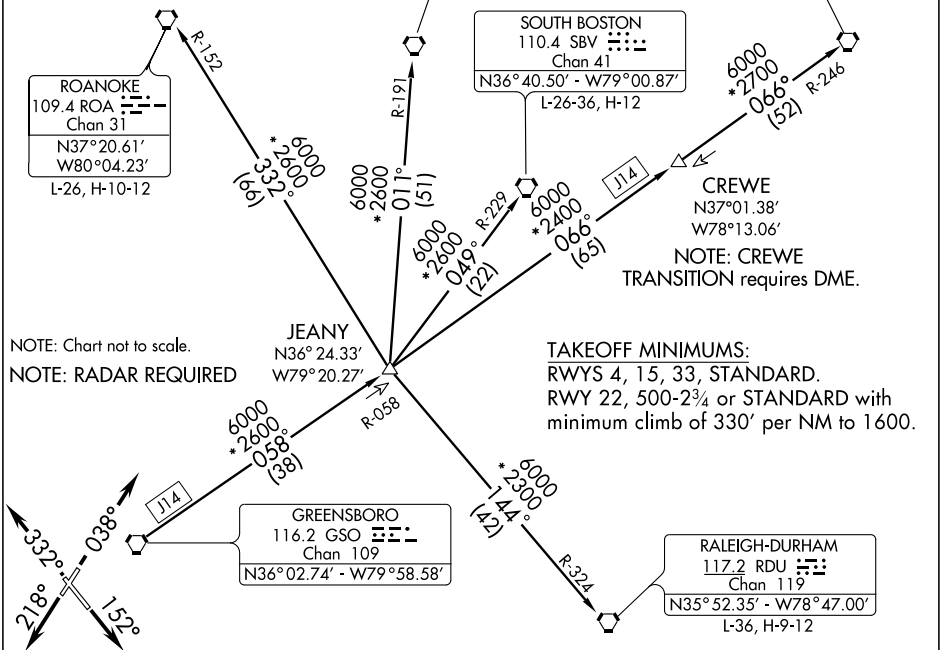
ATIS 121.3
 GND CON
 128.25
 WINSTON-SALEM TOWER*
 123.75 257.8
 GREENSBORO DEP CON
 124.35 269.225

LYNCHBURG
 109.2 LYH
 Chan 29
 N37°15.28' - W79°14.19'
 L-26-36, H-10-12

RICHMOND
 114.1 RIC
 Chan 88
 L-34-36, H-10-12

SOUTH BOSTON
 110.4 SBV
 Chan 41
 N36°40.50' - W79°00.87'
 L-26-36, H-12

ROANOKE
 109.4 ROA
 Chan 31
 N37°20.61' - W80°04.23'
 L-26, H-10-12



SE-2, 22 OCT 2009 to 19 NOV 2009

SE-2, 22 OCT 2009 to 19 NOV 2009

DEPARTURE ROUTE DESCRIPTION

- TAKEOFF RWY 4: Climb heading 038°. Thence....
- TAKEOFF RWY 15: Climb heading 152°. Thence....
- TAKEOFF RWY 22: Climb heading 218°. Thence....
- TAKEOFF RWY 33: Climb heading 332°. Thence....

TURBOJET: Maintain 4000. TURBOPROP/PROP: Maintain 2500 or assigned altitude.

... Expect vector to intercept assigned radial associated with issued transition. Proceed via the depicted radial to the transition fix then as filed. If no transition assigned, expect vector to appropriate fix. Expect filed altitude/flight level ten minutes after departure.