

LOC I-INT <b>110.3</b>	APP CRS <b>332°</b>	Rwy Idg <b>6655</b>
		TDZE <b>941</b>
		Apt Elev <b>969</b>

# ILS or LOC RWY 33

WINSTON-SALEM / SMITH REYNOLDS (INT)

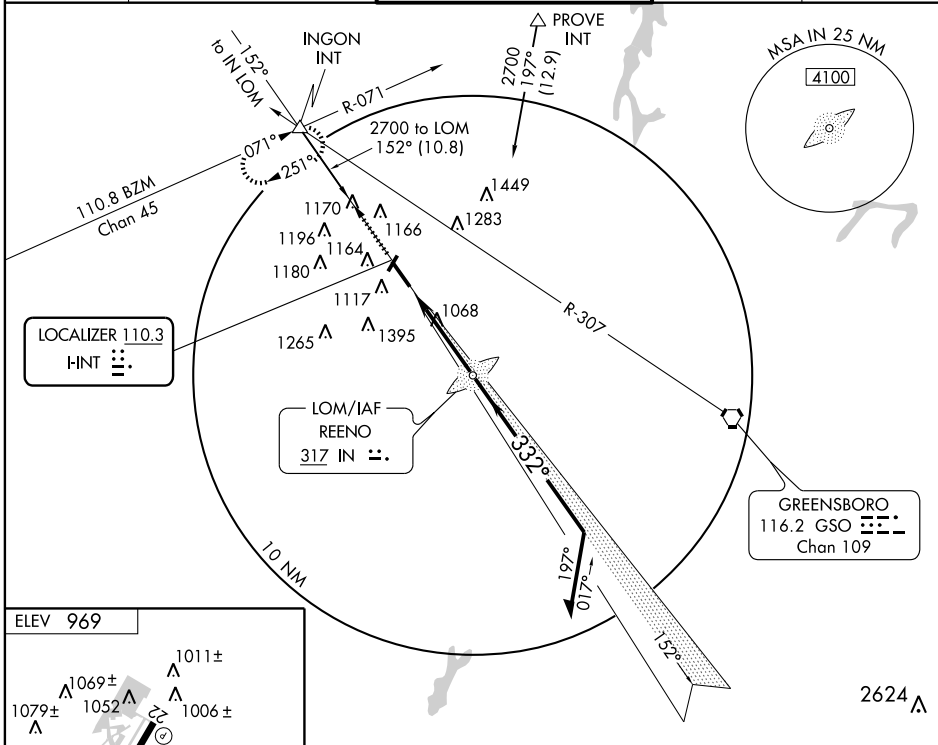
For inoperative MALSR, when using Piedmont Triad Intl altimeter setting, increase S-ILS 33 visibility to RVR 5000 all Cats. When local altimeter setting not received, use Piedmont Triad Intl altimeter setting and increase all DA 39 feet and all MDA 40 feet; increase S-LOC 33 Cat. C visibility to RVR 4000 and Circling Cat. D ½ mile. ADF Required.

MALSR



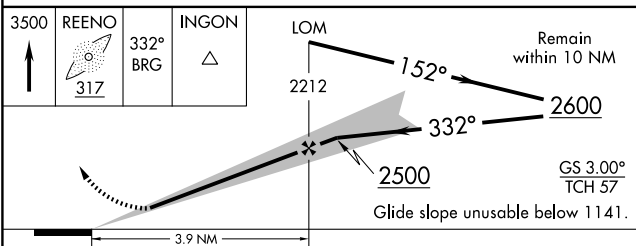
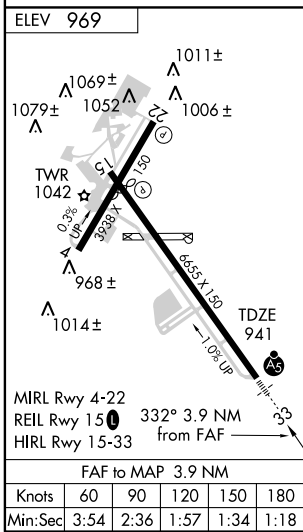
MISSED APPROACH: Climb to 3500 via 332° bearing from REENO LOM to INGON Int and hold, continue climb-in-hold to 3500.

ATIS <b>121.3</b>	GREENSBORO APP CON <b>124.35 269.225</b>	WINSTON-SALEM TOWER ★ <b>123.75 (CTAF) 0 257.8</b>	GND CON <b>128.25</b>	UNICOM <b>122.95</b>
----------------------	---	---	--------------------------	-------------------------



SE-2, 22 OCT 2009 to 19 NOV 2009

SE-2, 22 OCT 2009 to 19 NOV 2009



CATEGORY	A	B	C	D
S-ILS 33		1141/24	200 (200-½)	
S-LOC 33		1320/24	379 (400-½)	1320/40 379 (400-¾)
CIRCLING	1480-1 511 (600-1)	1580-1 611 (700-1)	1580-1¾ 611 (700-1¾)	1740-2½ 771 (800-2½)