

VORTAC INK <b>112.1</b> Chan <b>58</b>	APP CRS <b>150°</b>	Rwy Idg <b>5000</b> TDZE <b>2822</b> Apt Elev <b>2822</b>
--	------------------------	---

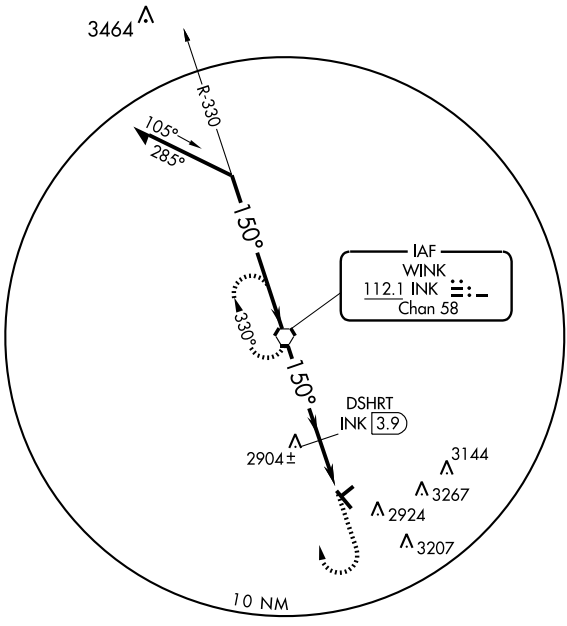
# VOR RWY 13

WINK/WINKLER COUNTY (INK)

**▼** When local altimeter setting not received, use Pecos altimeter setting and increase all MDAs 100 feet and Cat C visibility ¼ mile and increase DSHRT fix: all MDA 100 feet and S-13 Cat C visibility ¼ mile. VDP NA when using Pecos altimeter setting.

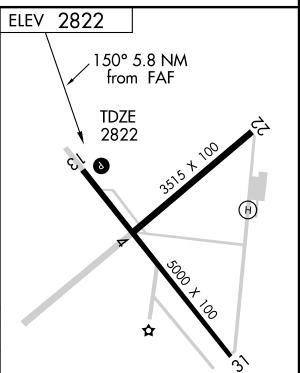
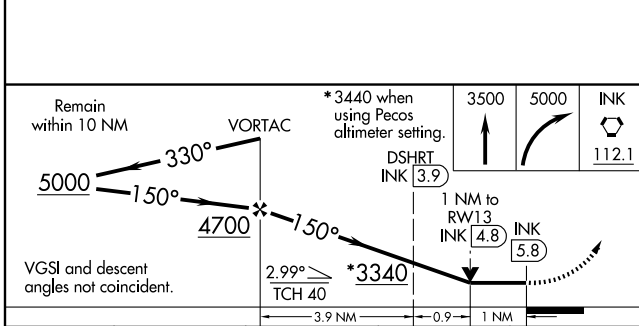
**MISSED APPROACH:** Climb to 3500 then climbing right turn to 5000 direct INK VORTAC and hold.

ASOS <b>118.325</b>	FORT WORTH CENTER <b>133.1 298.95</b>	UNICOM <b>123.0 (CTAF) 0</b>
------------------------	--	---------------------------------



SC-3, 22 OCT 2009 to 19 NOV 2009

SC-3, 22 OCT 2009 to 19 NOV 2009



CATEGORY	A	B	C	D
S-13	3340-1	518 (600-1)	3340-1½ 518 (600-1½)	NA
CIRCLING	3340-1	518 (600-1)	3340-1½ 518 (600-1½)	NA
DSHRT FIX MINIMUMS				
S-13	3160-1 338 (400-1)			NA
CIRCLING	3280-1 458 (500-1)	3300-1 478 (500-1)	3300-1½ 478 (500-1½)	NA

MIRL Rwy 4-22 and 13-31 0

FAF to MAP 5.8 NM

Knots	60	90	120	150	180
Min:Sec	5:48	3:52	2:54	2:19	1:56