

RNAV (GPS) RWY 31

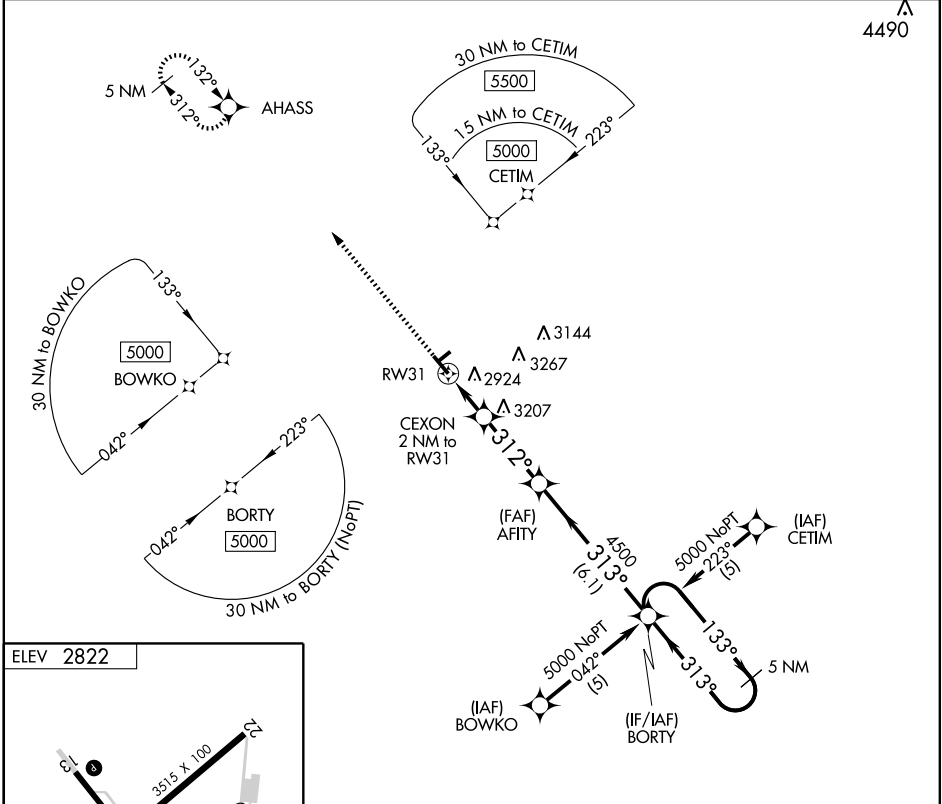
WINK/WINKLER COUNTY (INK)

APP CRS 312°	Rwy Idg 5000 TDZE 2818 Apt Elev 2822
------------------------	---

⚠ DME/DME RNP-0.3 NA. When local altimeter setting not received, use Pecos altimeter setting and increase all MDA 100 feet and LNAV Cat C visibility ¼ mile. VDP NA when using Pecos altimeter setting.

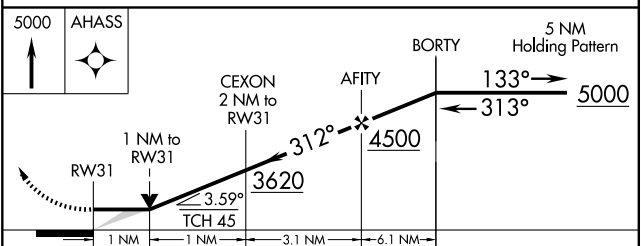
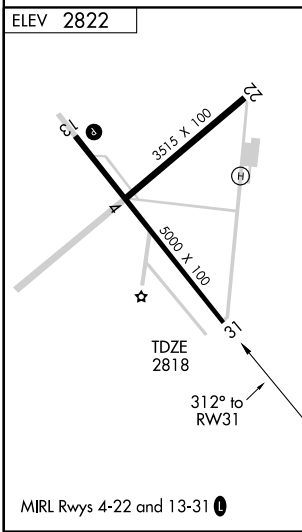
MISSED APPROACH: Climb to 5000 direct AHASS and hold.

ASOS 118,325	FORT WORTH CENTER 133.1 298.95	UNICOM 123.0 (CTAF) 0
------------------------	--	---------------------------------



SC-3, 22 OCT 2009 to 19 NOV 2009

SC-3, 22 OCT 2009 to 19 NOV 2009



CATEGORY	A	B	C	D
LNAV MDA	3240-1	422 (500-1)	3240-1¼ 422 (500-1¼)	NA
CIRCLING	3280-1 458 (500-1)	3300-1 478 (500-1)	3300-1½ 478 (500-1½)	NA