

# RNAV (GPS) RWY 13

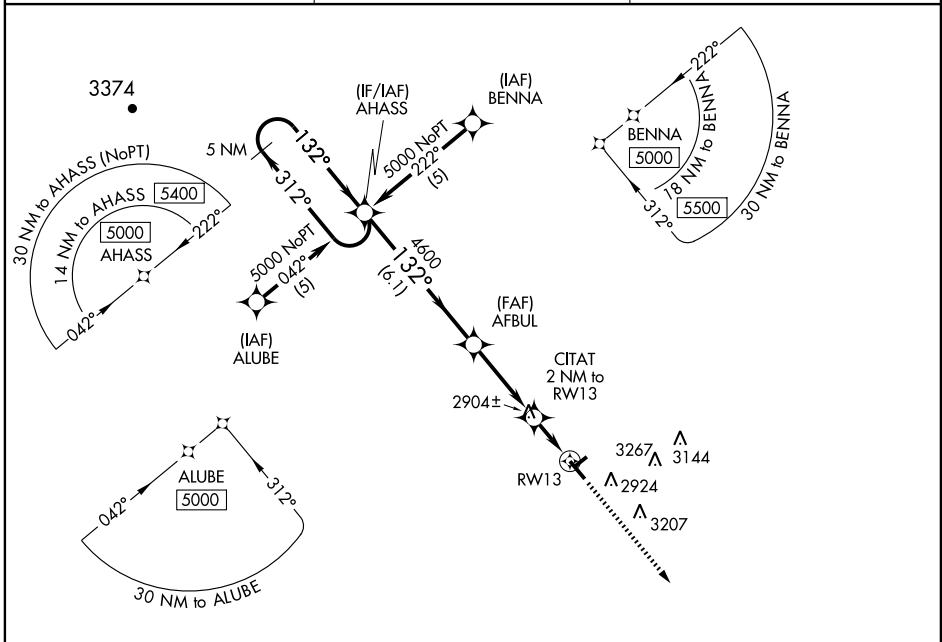
WINK/WINKLER COUNTY (INK)

APP CRS <b>132°</b>	Rwy Idg <b>5000</b>
	TDZE <b>2822</b>
	Apt Elev <b>2822</b>

**⚠** DME/DME RNP-0.3 NA. When local altimeter setting not received, use Pecos altimeter setting and increase all MDA 100 feet and LNAV Cat C visibility ¼ mile. VDP NA when using Pecos altimeter setting.

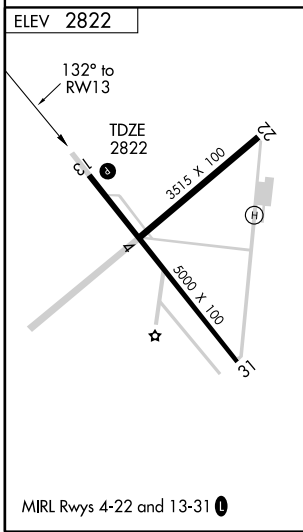
**MISSED APPROACH:** Climb to 5000 direct BORTY and hold.

ASOS <b>118,325</b>	FORT WORTH CENTER <b>133.1 298.95</b>	UNICOM <b>123.0 (CTAF) 0</b>
------------------------	--	---------------------------------



SC-3, 22 OCT 2009 to 19 NOV 2009

SC-3, 22 OCT 2009 to 19 NOV 2009



5 NM Holding Pattern	5000	BORTY		
AHASS	AFBUL	CITAT 2 NM to RWY 13		
5000 ← 312°	4600	3500		
132° →	3.04° TCH 40	1 NM to RWY 13		
VGSIs and descent angles not coincident.				
← 6.1 NM      3.4 NM      1 NM      1 NM				
CATEGORY	A	B	C	D
LNAV MDA	3160-1 338 (400-1)			
CIRCLING	3280-1 458 (500-1)	3300-1 478 (500-1)	3300-1½ 478 (500-1½)	NA