

(DPK.DPK2) 07298

ST-460 (FAA)

DEER PARK TWO ARRIVAL

WINDSOR LOCKS, CONNECTICUT

BRADLEY APP CON
123.95 348.3
ATIS
118.15

BARNES
MUNI

WESTOVER ARB/
METROPOLITAN

BRADLEY
INTL

LOCALIZER 111.1

I-BDL
Chan 48

N41°57.30'-W72°39.99'

BRISS
N41°42.08'
W73°00.94'

MADISON

110.4 MAD
Chan 41

N41°18.83'-W72°41.53'

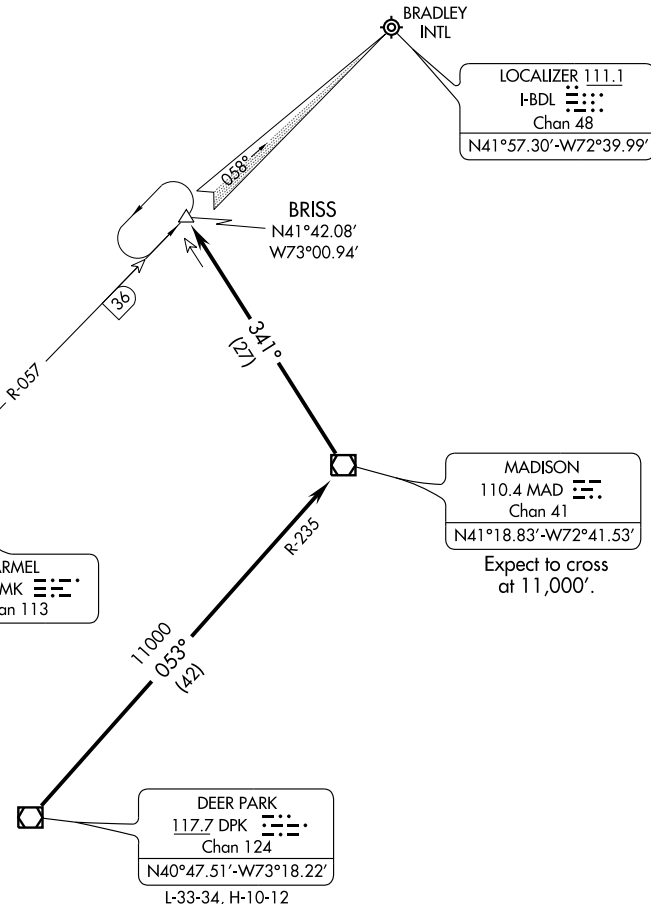
Expect to cross
at 11,000'.

DEER PARK

117.7 DPK
Chan 124

N40°47.51'-W73°18.22'

L-33-34, H-10-12



NOTE: Chart not to scale.

From over DPK VORTAC via DPK R-053 and MAD R-235 to MAD VOR/DME, thence from MAD VOR/DME via MAD R-341 to BRISS INT. Expect radar vectors to final approach course prior to BRISS INT when landing other than Bradley Runway 6.

NE-1, 22 OCT 2009 to 19 NOV 2009

NE-1, 22 OCT 2009 to 19 NOV 2009

DEER PARK TWO ARRIVAL

(DPK.DPK2) 07298

WINDSOR LOCKS, CONNECTICUT