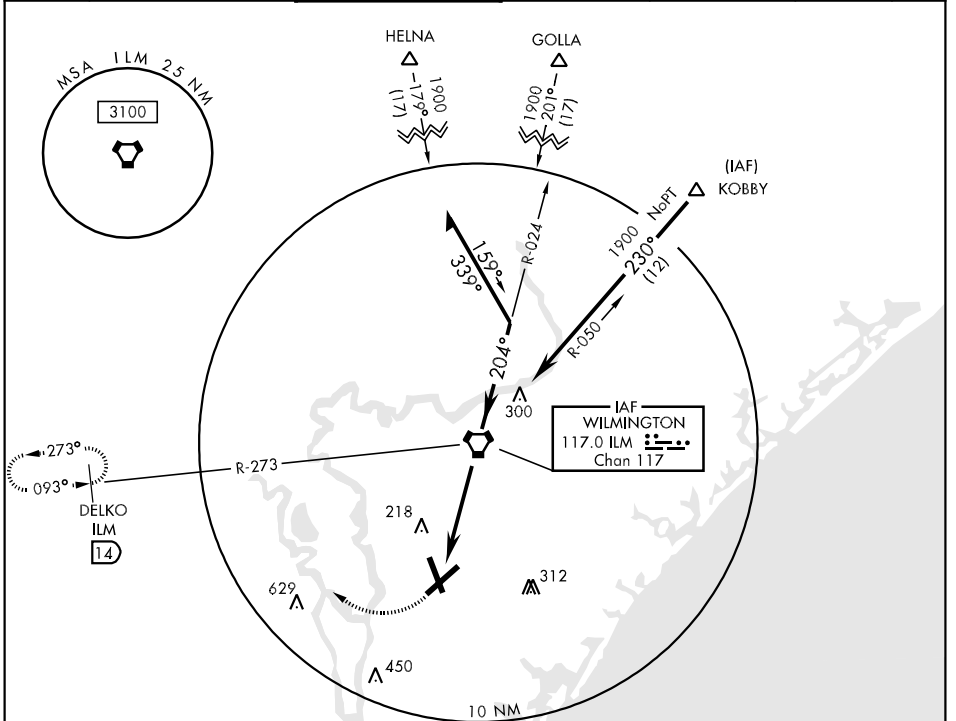


VORTAC ILM <b>117.0</b> Chan <b>117</b>	APCH CRS <b>204°</b>	Rwy ldg TDZE Arpt Elev <b>N/A</b> <b>N/A</b> <b>32</b>	AL-459 [USN]	WILMINGTON INTL (KILM)		
MISSED APPROACH: Climbing right turn to 3000 via hdg 320° and ILM VORTAC R-273 to DELKO int and hold.						
ATIS <b>124.975</b>	WILMINGTON APP CON <b>135.75 346.35</b>	WILMINGTON TOWER ★ <b>119.9 (CTAF) 0 239.3</b>	GND CON <b>121.9 348.6</b>	CLNC DEL <b>121.9 348.6</b>	UNICOM <b>122.95</b>	ASR



SE-2, 22 OCT 2009 to 19 NOV 2009

SE-2, 22 OCT 2009 to 19 NOV 2009

