

WILMINGTON, NORTH CAROLINA

AL-459 (FAA)

# RNAV (GPS) RWY 24

WILMINGTON INTL (ILM)

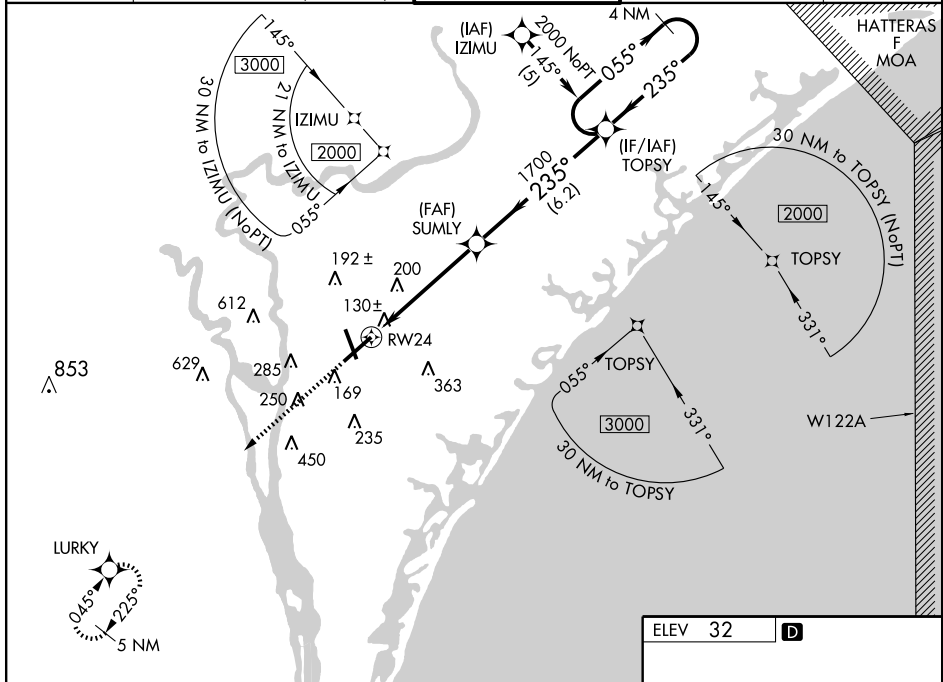
WAAS CH <b>45899</b> <b>W24A</b>	APP CRS <b>235°</b>	Rwy Idg TDZE Apt Elev	<b>8016</b> <b>26</b> <b>32</b>
--	------------------------	-----------------------------	---------------------------------------

**▲** For uncompensated Baro-VNAV systems, LNAV/VNAV NA below -15°C (5°F) or above 48°C (120°F). DME/DME RNP-0.3 NA. Straight-in minimums NA at night when control tower closed. If local altimeter setting not received, use Oak Island altimeter setting and increase all DAs 52 feet and all MDAs 60 feet. VDP and Baro-VNAV NA when using Oak Island altimeter setting.

**MALSR**

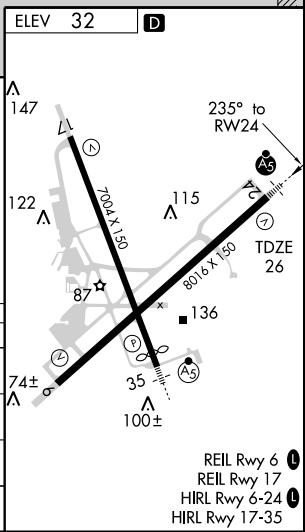
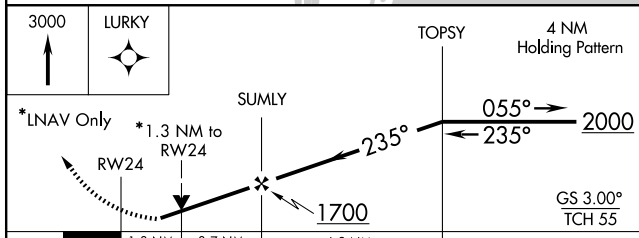
**MISSED APPROACH:** Climb to 3000 direct LURKY and hold.

<b>ATIS</b> <b>124.975</b>	<b>WILMINGTON APP CON *</b> <b>118.25 284.65</b> (164°-343°) <b>135.75 346.35</b> (344°-163°)	<b>WILMINGTON TOWER *</b> <b>119.9</b> (CTAF) <b>239.3</b>	<b>GND CON</b> <b>121.9 348.6</b>	<b>UNICOM</b> <b>122.95</b>
-------------------------------	---	---	--------------------------------------	--------------------------------



SE-2, 22 OCT 2009 to 19 NOV 2009

SE-2, 22 OCT 2009 to 19 NOV 2009



CATEGORY	A	B	C	D
LPV DA		367-1¼	341 (400-1¼)	
LNAV/ VNAV DA		405-1¼	379 (400-1¼)	
LNAV MDA	500-1 474 (500-1)		500-1¼ 474 (500-1¼)	500-1½ 474 (500-1½)
CIRCLING	560-1¼ 528 (600-1¼)		560-1½ 528 (600-1½)	600-2 568 (600-2)

WILMINGTON, NORTH CAROLINA  
Amdt 1 09295

34°16'N - 77°54'W

# RNAV (GPS) RWY 24

- REIL Rwy 6
- REIL Rwy 17
- HIRL Rwy 6-24
- HIRL Rwy 17-35