


ILS or LOC RWY 24

WILMINGTON INTL (ILM)

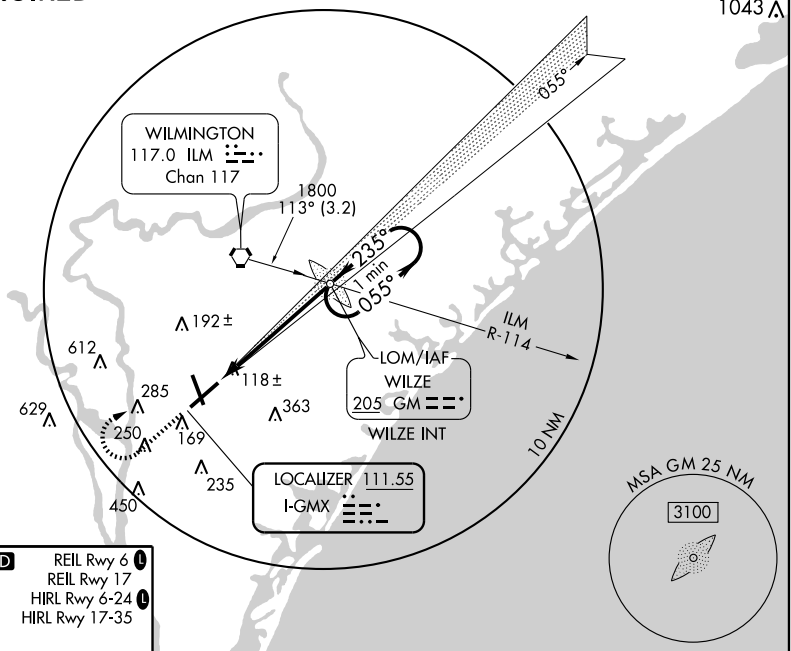
LOC I-GMX 111.55	APP CRS 235°	Rwy Idg 8016 TDZE 26 Aprt Elev 32
----------------------------	------------------------	--

⚠ If local altimeter setting not received, use Brunswick County altimeter setting and increase all DAs/MDAs 60 feet.
⚠ ADF REQUIRED. Straight-in minimums NA at night when control tower closed.
ASR * RVR 1800 authorized with the use of FD or AP or HUD to DA.

MALSR

MISSED APPROACH: Climb to 500 then climbing right turn to 1800 direct WILZE LOM and hold.

ATIS 124.975	WILMINGTON APP CON * 118.25 284.65 (164°-343°) 135.75 346.35 (344°-163°)	WILMINGTON TOWER * 119.9 (CTAF) 239.3	GND CON 121.9 348.6	UNICOM 122.95
------------------------	--	--	-------------------------------	-------------------------

ADF REQUIRED

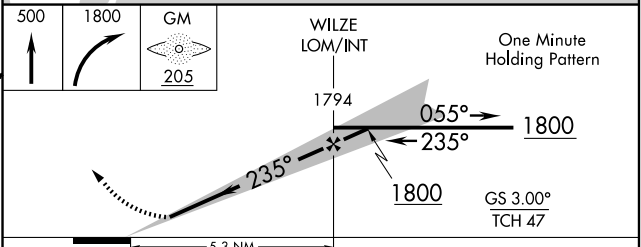


SE-2, 22 OCT 2009 to 19 NOV 2009

SE-2, 22 OCT 2009 to 19 NOV 2009

ELEV 32	D REIL Rwy 6
	REIL Rwy 17
	HIRL Rwy 6-24
	HIRL Rwy 17-35

FAF to MAP 5.3 NM					
Knots	60	90	120	150	180
Min:Sec	5:18	3:32	2:39	2:07	1:46



CATEGORY	A	B	C	D
S-ILS 24	* 226/24 200 (200-½)			
S-LOC 24	380/24	354 (400-½)	380/40 354 (400-¾)	
CIRCLING	560-1	528 (600-1)	560-½ 528 (600-½)	640-2 608 (700-2)