

VORTAC DQO 114.0 Chan 87	APP CRS 094°	Rwy Idg 7181 TDZE 80 Apt Elev 80
--	------------------------	---

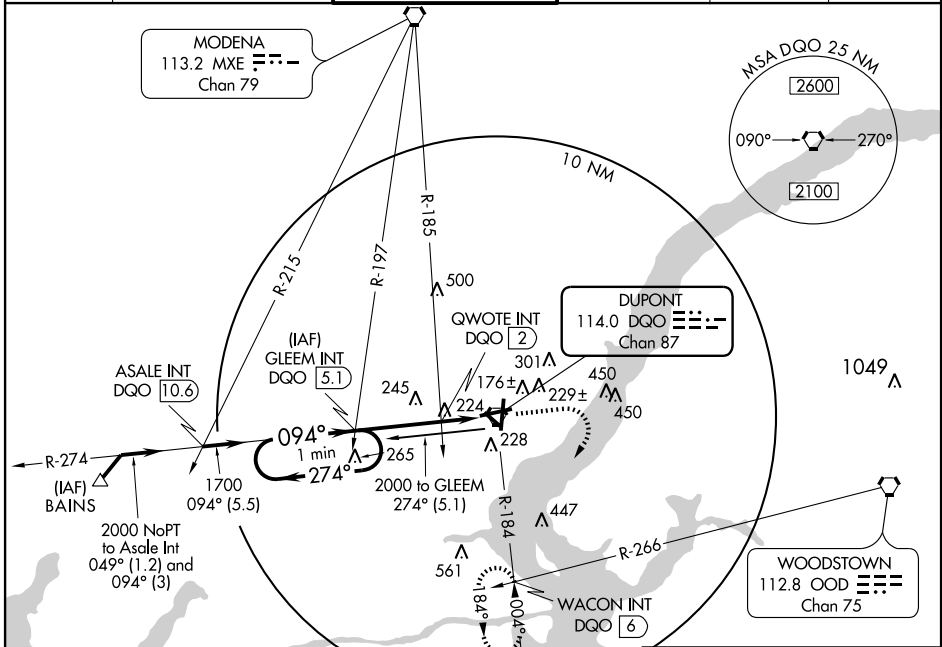
VOR RWY 9

WILMINGTON / NEW CASTLE (ILG)

▼ Inoperative table does not apply to ODALS.

MISSED APPROACH: Climb to 500, then climbing right turn to 2000 via DQO R-184 to WACON Int/DGO 6 DME and hold.

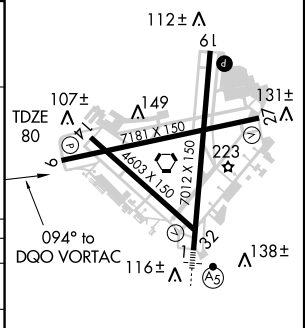
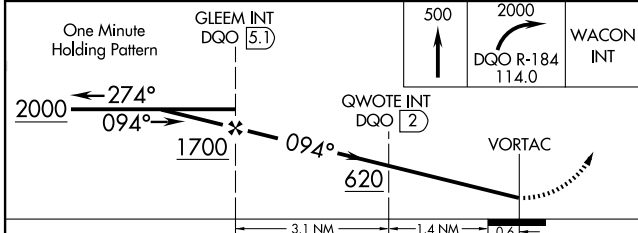
ATIS 123.95	PHILADELPHIA APP CON 118.35 323.1	WILMINGTON TOWER ★ 126.0 (CTAF) 305.4	GND CON 121.7 275.8	CLNC DEL 119.95	UNICOM 122.95
-----------------------	---	---	-------------------------------	---------------------------	-------------------------



NE-3, 22 OCT 2009 to 19 NOV 2009

NE-3, 22 OCT 2009 to 19 NOV 2009

ELEV 80



CATEGORY	A	B	C	D
S-9	620-1	540 (600-1)	620-1½ 540 (600-1½)	620-1¾ 540 (600-1¾)
CIRCLING	620-1	540 (600-1)	620-1½ 540 (600-1½)	640-2 560 (600-2)
QWOTE INT MINIMUMS				
S-9	440-1 360 (400-1)		440-1¼ 360 (400-1¼)	
CIRCLING	540-1	460 (500-1)	600-1½ 520 (600-1½)	640-2 560 (600-2)

REIL Rwy 19					
HIRL Rwys 9-27 and 1-19					
MIRL Rwy 14-32					
FAF to MAP 5.1 NM					
Knots	60	90	120	150	180
Min:Sec	5:06	3:24	2:33	2:02	1:42