

WAAS CH 49015 W09A	APP CRS 088°	Rwy Idg 7181 TDZE 80 Apt Elev 80
--	------------------------	---

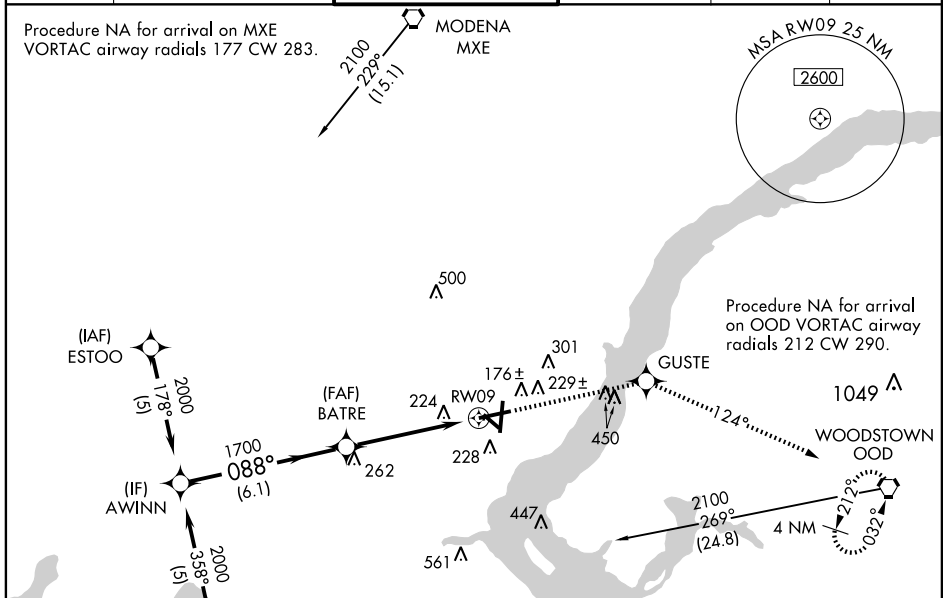
RNAV (GPS) RWY 9

WILMINGTON / NEW CASTLE (ILG)

For uncompensated Baro-VNAV systems, LNAV/VNAV NA below -15°C (5°F) or above 48°C (118°F). DME/DME RNP-0.3 NA. Visibility reduction by helicopters NA. VDP and Baro-VNAV NA when using Philadelphia Intl altimeter setting. When local altimeter setting not received, use Philadelphia Intl altimeter setting: increase LPV DA to 448, LNAV/VNAV DA to 568 and all MDA 60 ft; increase LPV all Cats visibility ¼ mile and LNAV/VNAV all Cats visibility ½ mile.

MISSED APPROACH: Climb to 2100 direct GUSTE and via track 124° to OOD VORTAC and hold.

ATIS 123.95	PHILADELPHIA APP CON 118.35 323.1	WILMINGTON TOWER * 126.0 (CTAF) 305.4	GND CON 121.7 275.8	CLNC DEL 119.95	UNICOM 122.95
-----------------------	---	--	-------------------------------	---------------------------	-------------------------



NE-3, 22 OCT 2009 to 19 NOV 2009

NE-3, 22 OCT 2009 to 19 NOV 2009

ELEV 80		<div style="display: flex; justify-content: space-around;"> <div style="text-align: center;">2100 ↑ GUSTE</div> <div style="text-align: center;">TRK 124°</div> <div style="text-align: center;">OOD</div> </div>			
AWINN 2000		* LNAV Only.			
Procedure Turn NA GS 3.00° TCH 55		<div style="display: flex; justify-content: space-around;"> <div style="text-align: center;">AWINN 2000</div> <div style="text-align: center;">BATRE 1700</div> <div style="text-align: center;">RWY 9</div> </div>			
6.1 NM		3.6 NM		1.2 NM	
CATEGORY	A	B	C	D	
LPV DA	394-1 314 (400-1)				
LNAV/VNAV DA	433-1¼ 353 (400-1¼)				
LNAV MDA	520-1 440 (500-1)		520-1¼ 440 (500-1¼)		520-1½ 440 (500-1½)
CIRCLING	540-1 460 (500-1)		600-1½ 520 (600-1½)		640-2 560 (600-2)