

WAAS CH <b>53515</b> <b>W27A</b>	APP CRS <b>268°</b>	Rwy ldg <b>7181</b> TDZE <b>72</b> Apt Elev <b>80</b>
----------------------------------------	------------------------	-------------------------------------------------------------

# RNAV (GPS) RWY 27

WILMINGTON / NEW CASTLE (ILG)

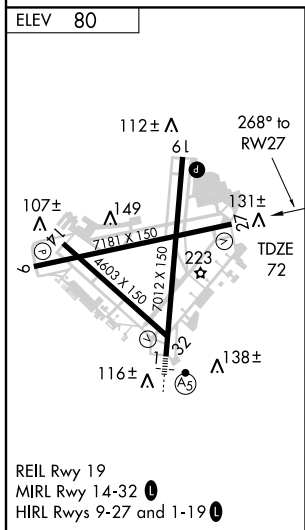
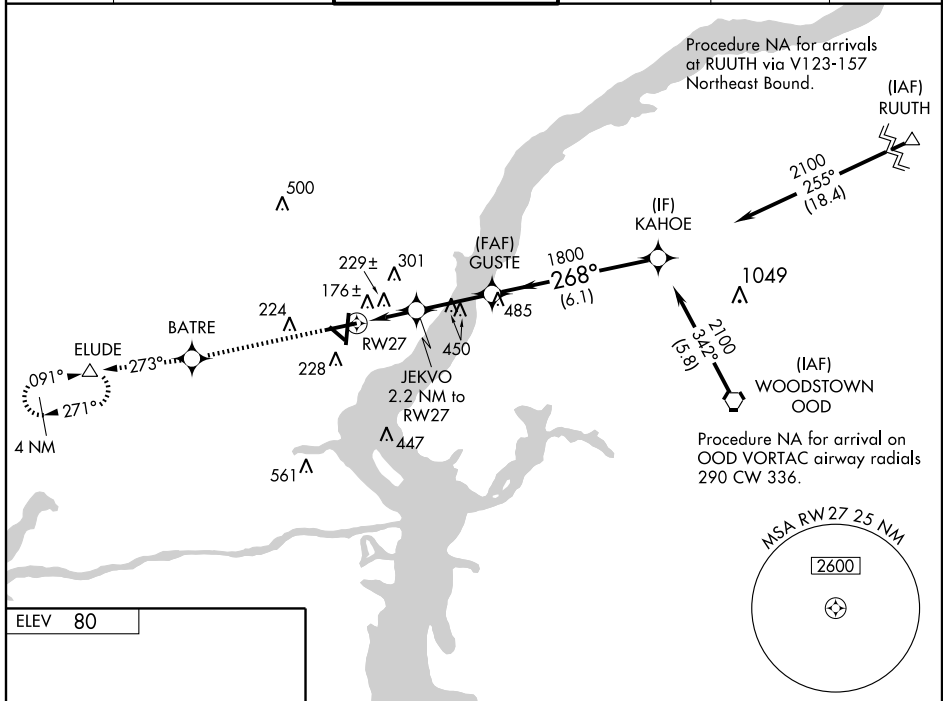
Baro-VNAV NA when using Philadelphia Intl altimeter setting. For uncompensated Baro-VNAV systems, LNAV/VNAV NA below -15°C (5°F) or above 39°C (102°F). DME/DME RNP-0.3 NA. Visibility reduction by helicopters NA. When local altimeter setting not received, use Philadelphia Intl altimeter setting: increase LPV DA to 480, LNAV/VNAV DA to 570, and all MDA 60 ft; increase LNAV/VNAV all Cats and LNAV Cat. D visibility ¼ mile.

MISSED APPROACH: Climb to 2000 direct BATRE and via track 273° to ELUDE and hold.

ATIS <b>123.95</b>	PHILADELPHIA APP CON <b>118.35 323.1</b>	WILMINGTON TOWER* <b>126.0</b> (CTAF) <b>305.4</b>	GND CON <b>121.7 275.8</b>	CLNC DEL <b>119.95</b>	UNICOM <b>122.95</b>
-----------------------	---------------------------------------------	-------------------------------------------------------	-------------------------------	---------------------------	-------------------------

NE-3, 22 OCT 2009 to 19 NOV 2009

NE-3, 22 OCT 2009 to 19 NOV 2009



2000	BATRE	ELUDE	VGSI and RNAV glidepath not coincident.	Procedure Turn NA
↑	✧	△		
* LNAV Only	JEKVO 2.2 NM to RW27	GUSTE	KAHOE	GS 3.10° TCH 68
	2.2 NM	2.8 NM	6.1 NM	
CATEGORY	A	B	C	D
LPV DA		426-1¼	354 (400-1¼)	
LNAV/ VNAV DA		516-1½	444 (500-1½)	
LNAV MDA	480-1	408 (400-1)	480-1¼	408 (400-1¼)
CIRCLING	540-1	460 (500-1)	600-1½	640-2
			520 (600-1½)	560 (600-2)