

WAAS CH 82115 W19A	APP CRS 195°	Rwy ldg 7012 TDZE 71 Apt Elev 80
--	------------------------	---

RNAV (GPS) RWY 19

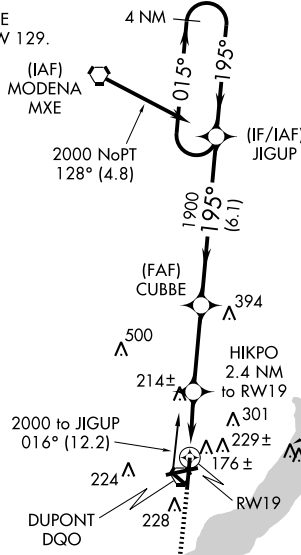
WILMINGTON / NEW CASTLE (ILG)

Baro-VNAV NA when using Philadelphia Intl altimeter setting. For uncompensated Baro-VNAV systems, LNAV/VNAV NA below -15°C (5°F) or above 49°C (120°F). DME/DME RNP-0.3 NA.
 Visibility reduction by helicopters NA. When local altimeter setting not received, use Philadelphia Intl altimeter setting: increase LPV DA to 425, LNAV/VNAV DA to 592, and all MDA 60 ft; increase LPV all Cats and LNAV Cat. D visibility ¼ mile.

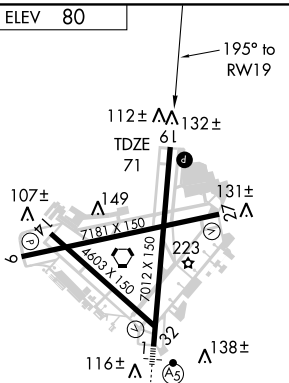
MISSED APPROACH:
Climb to 2000 direct FESER and hold.

ATIS 123.95	PHILADELPHIA APP CON 118.35 323.1	WILMINGTON TOWER* 126.0 (CTAF) 305.4	GND CON 121.7 275.8	CLNC DEL 119.95	UNICOM 122.95
-----------------------	---	--	-------------------------------	---------------------------	-------------------------

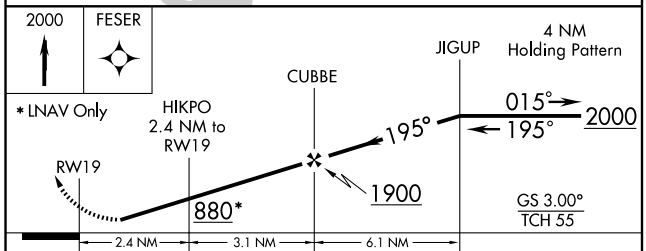
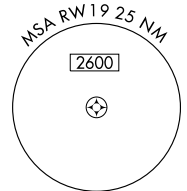
Procedure NA for arrival on MXE
VORTAC airway radials 056 CW 129.



Procedure NA for arrival on DQO VORTAC
airway radials 053 CW 068.



REIL Rwy 19
MIRL Rwy 14-32
HIRL Rwy 9-27 and 1-19



CATEGORY	A	B	C	D
LPV DA		371-1	300 (300-1)	
LNAV/VNAV DA		538-1¾	467 (500-1¾)	
LNAV MDA	480-1	409 (400-1)	480-1¼	409 (400-1¼)
CIRCLING	540-1	460 (500-1)	600-1½	640-2
			520 (600-1½)	560 (600-2)

NE-3, 22 OCT 2009 to 19 NOV 2009

NE-3, 22 OCT 2009 to 19 NOV 2009