


WAAS CH 65815 W01A	APP CRS 015°	Rwy Idg 7012 TDZE 76 Apt Elev 80
--	------------------------	---

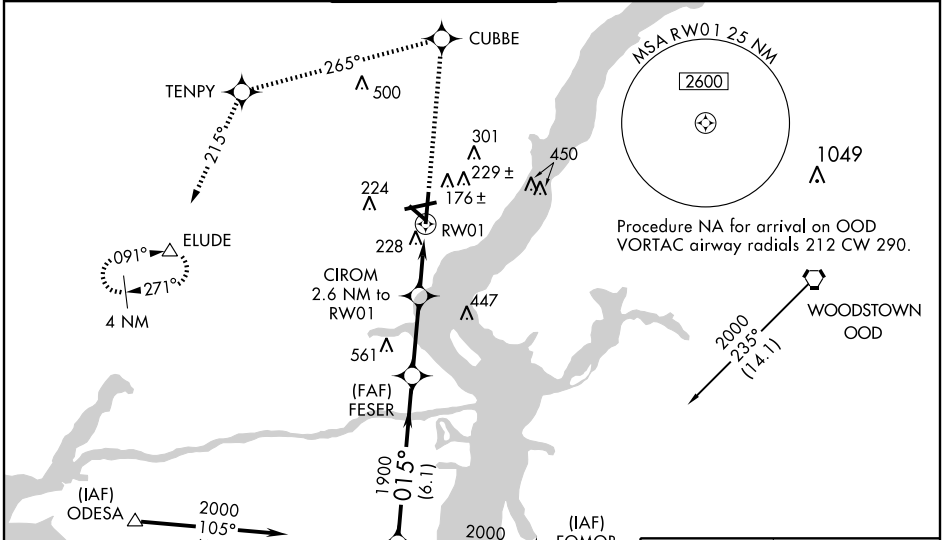
RNAV (GPS) RWY 1

WILMINGTON / NEW CASTLE (ILG)

Inoperative table does not apply to LPV all Cats. and LNAV Cats. A and B. Baro-VNAV NA when using Philadelphia Intl altimeter setting. For uncompensated Baro-VNAV systems, LNAV/VNAV NA below -15°C (5°F) or above 49°C (120°F).
 DME/DME RNP-0.3 NA. Visibility reduction by helicopters NA. When local altimeter setting not received, use Philadelphia Intl altimeter setting: increase LPV DA to 380, LNAV/VNAV DA to 579, and all MDA 60 ft; increase LNAV/VNAV all Cats.visibility to RVR 6000. For inoperative MALSR, increase LNAV Cats. C and D visibility ¼ mile. For inoperative MALSR, when using Philadelphia Intl altimeter setting, increase LNAV visibility Cat. C ¼ mile.

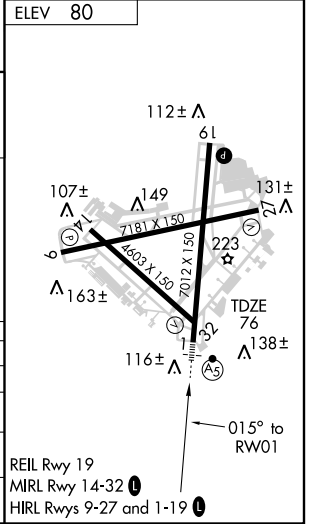
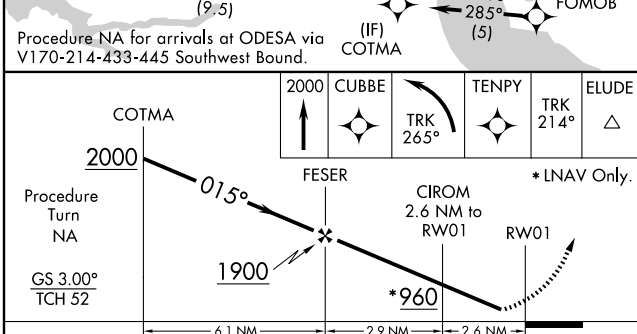
MALSR

 MISSED APPROACH:
 Climb to 2000 direct CUBBE and left turn via track 265° to TENPY and via track 214° to ELUDE and hold.

ATIS 123.95	PHILADELPHIA APP CON 118.35 323.1	WILMINGTON TOWER* 126.0 (CTAF) 305.4	GND CON 121.7 275.8	CLNC DEL 119.95	UNICOM 122.95
-----------------------	---	---	-------------------------------	---------------------------	-------------------------



NE-3, 22 OCT 2009 to 19 NOV 2009

NE-3, 22 OCT 2009 to 19 NOV 2009



CATEGORY	A	B	C	D
LPV DA		326/50	250 (300-1)	
LNAV/VNAV DA		525/50	449 (500-1)	
LNAV MDA		480/50	404 (400-1)	
CIRCLING	540-1	460 (500-1)	600-1½ 520 (600-1½)	640-2 560 (600-2)