


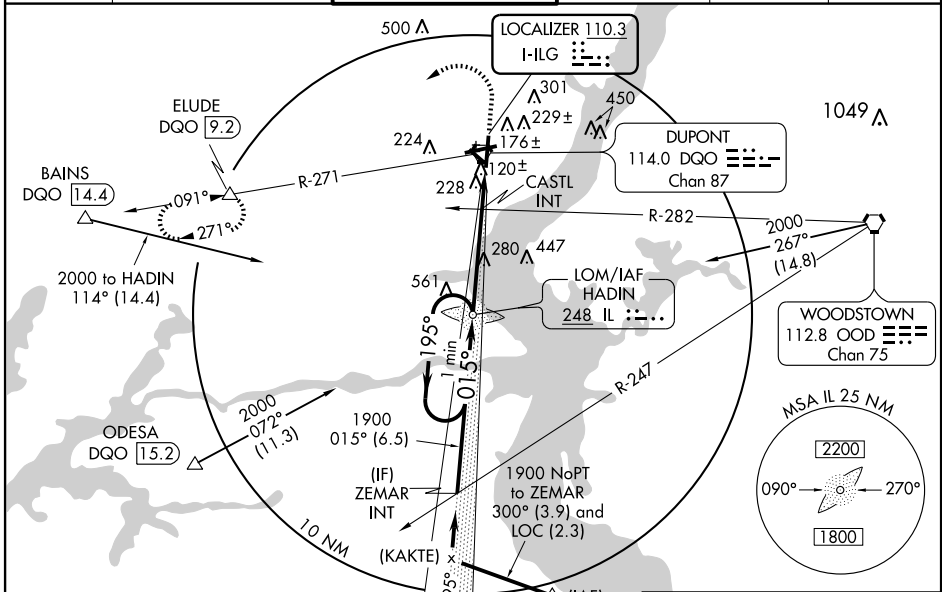
ILS or LOC RWY 1
WILMINGTON / NEW CASTLE (ILG)

LOC I-ILG 110.3	APP CRS 015°	Rwy Idg 7012 TDZE 75 Apt Elev 79
---------------------------	------------------------	----------------------------------------------------------------------

▼ Inoperative table does not apply to S-ILS 1. For inoperative MALSR increase S-LOC 1 Cat A and B vis to RVR 5000. When local altimeter setting not received, use Philadelphia Intl altimeter setting and increase DA to 379, all MDA 60 feet, S-LOC 1 Cat D vis to RVR 6000. For inoperative MALSR increase S-ILS 1 all Cats vis to RVR 5000. CASTL Fix minimums: For inoperative MALSR increase S-LOC 1 all Cats vis to RVR 5000. Visibility reduction by helicopters NA. DME or ADF REQUIRED.

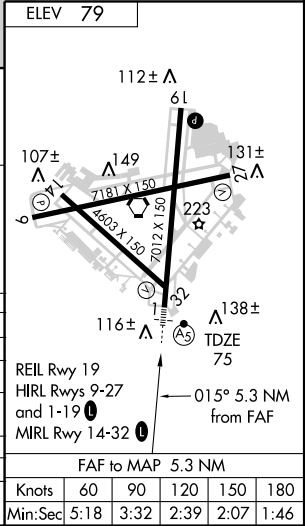
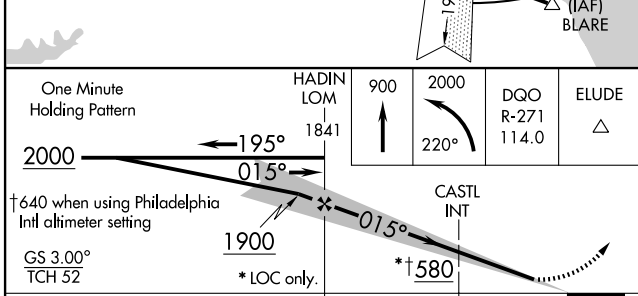
MALSR

 MISSED APPROACH: Climb to 900 then climbing left turn to 2000 via heading 220° and DQO VORTAC R-271 to ELUDE/9.2 DME and hold (Non-DME aircraft climb to 900, then climbing left turn to 2000 direct HADIN LOM and hold).

ATIS 123.95	PHILADELPHIA APP CON 118.35 323.1	WILMINGTON TOWER* 126.0 (CTAF) 305.4	GND CON 121.7 275.8	CLNC DEL 119.95	UNICOM 122.95
-----------------------	---------------------------------------------	-------------------------------------------------------	-------------------------------	---------------------------	-------------------------



NE-3, 22 OCT 2009 to 19 NOV 2009

NE-3, 22 OCT 2009 to 19 NOV 2009



CATEGORY	A	B	C	D
S-ILS 1	325/40 250 (300-¾)			
S-LOC 1	580/40	505 (600-¾)	580-50	505 (600-1)
CIRCLING	580-1	501 (600-1)	600-1½ 521 (600-1½)	640-2 561 (600-2)
CASTL FIX MINIMUMS				
S-LOC 1	380/40 305 (400-¾)			
CIRCLING	540-1	461 (500-1)	600-1½ 521 (600-1½)	640-2 561 (600-2)