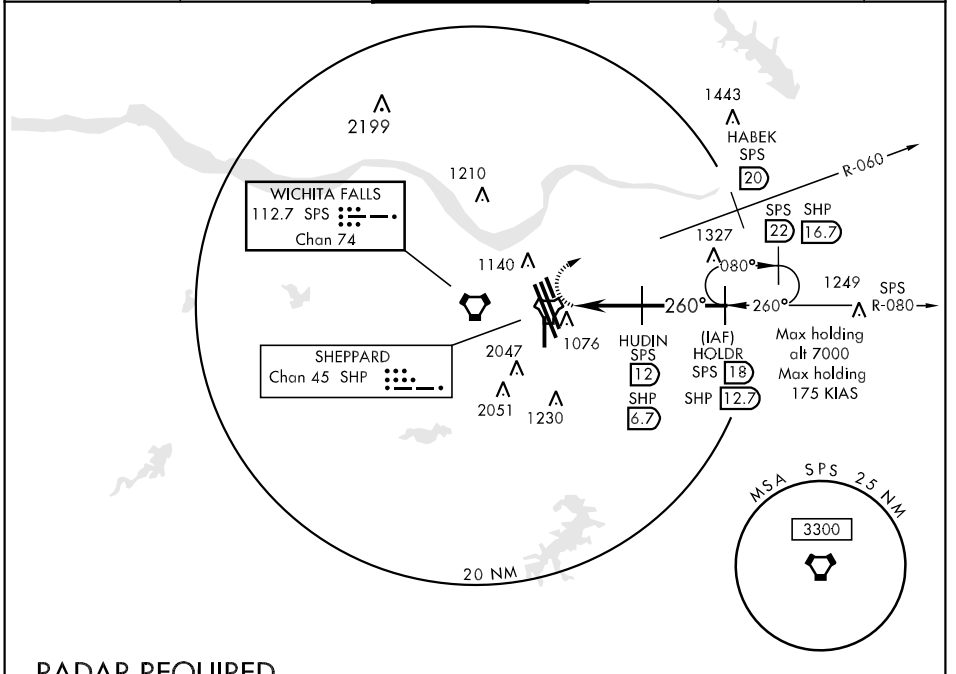


VORTAC SPS 112.7 Chan 74	APCH CRS 260°	Rwy Idg TDZE N/A N/A Arpt Elev 1019	AL-454 [USAF] WICHITA FALLS/ SHEPPARD AFB/WICHITA FALLS MUNI (KSPS)
--	-------------------------	--	--

* Circling not authorized W of Rwy 15R-33L. MISSED APPROACH: Climbing right turn to 3200, intcp SPS VORTAC R-060 to 20 DME (HABEK). Expect radar vectors.

ATIS ★ 132.05 269.9	SHEPPARD APP CON 118.2 269.025	SHEPPARD TOWER ★ 119.75 279.525 (CTAF)	GND CON 125.5 289.4	CLNC DEL 121.2 282.225	ASR/PAR
-------------------------------	--	--	-------------------------------	----------------------------------	---------



SC-2, 22 OCT 2009 to 19 NOV 2009

SC-2, 22 OCT 2009 to 19 NOV 2009

RADAR REQUIRED
PROCEDURE TURN
NOT AUTHORIZED

EMERG SAFE ALT 100 NM 4600

3200 SPS R-060	HABEK SPS 20	IXODE SPS 7	HUDIN SPS 12 SHP 6.7	HOLDR SPS 18 SHP 12.7		
VORTAC SPS	TACAN SHP	2600	2600	3000		
CATEGORY		A	B	C	D	E
CIRCLING *		1440-2 421 (500-2)	1480-2 461 (500-2)	1580-2 561 (600-2)	2080-3 1061(1100-3)	

