

NDB ICF <b>296</b>	APCH CRS <b>330°</b>	Rwy Idg TDZE Arpt Elev <b>13101</b> <b>1000</b> <b>1019</b>
-----------------------	-------------------------	--

AL-454 (USAF)

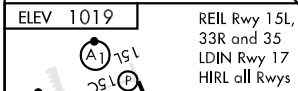
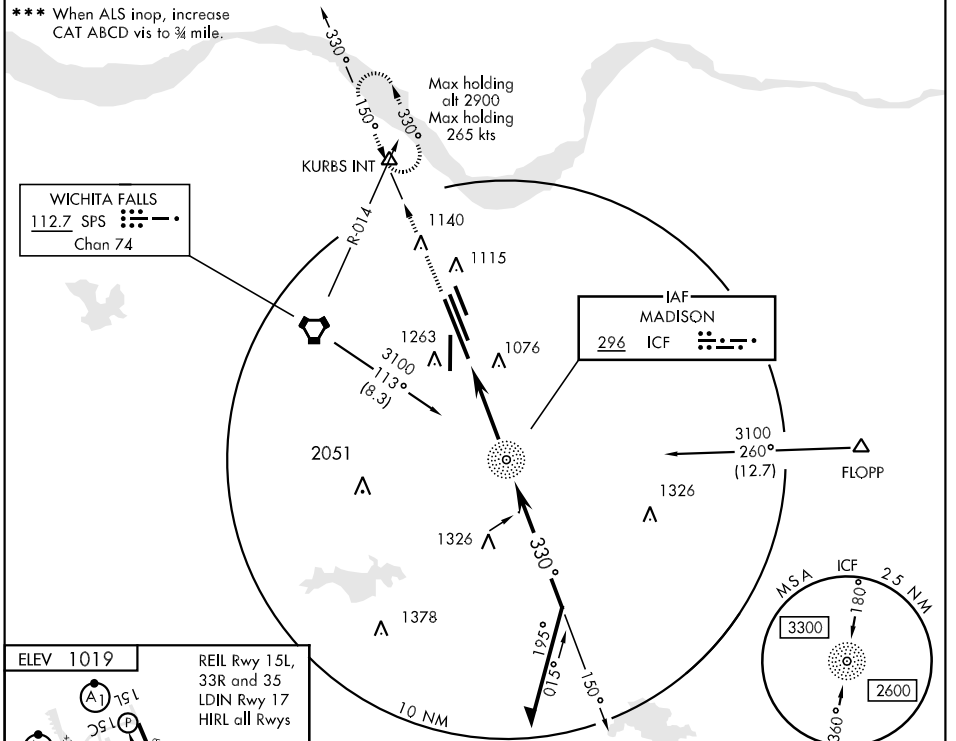
WICHITA FALLS/SHEPPARD AFB/WICHITA FALLS MUNI (KSPS)

▼ \* When ALS inop, increase CAT AB vis to 1 mile, CAT C vis to 1½ miles, CAT D vis to 1¾ miles.  
\*\* Circling NA West of Rwy 15R-33L.

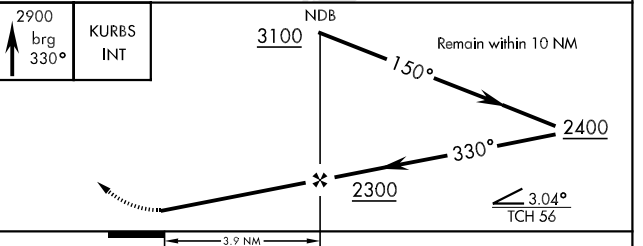
MALSR  
(A5) MISSED APPROACH: Climb to 2900 on bearing 330° from ICF NDB to KURBS INT and hold.

ATIS ★ <b>132.05 269.9</b>	SHEPPARD APP CON <b>118.2 269.025</b>	SHEPPARD TOWER ★ <b>119.75 279.525</b> (CTAF)	GND CON <b>125.5 289.4</b>	CLNC DEL <b>121.2 282.225</b>	ASOS	ASR/PAR
-------------------------------	--	--	-------------------------------	----------------------------------	------	---------

\*\*\* When ALS inop, increase CAT ABCD vis to ¾ mile.



EMERG SAFE ALT 100 NM FROM "SPS" VORTAC 4600



CATEGORY	A		B		C		D	
	Min	Sec	Min	Sec	Min	Sec	Min	Sec
S-33L *	1540	½	540	(600-½)	1540	- 1	540	(600-1)
CIRCLING **	1540	- 1	521	(600-1)	1540	- 1½	521	(600-1½)
S-PAR ***	1200-½		200		(200-½)		GS 3.00°	

SC-2, 22 OCT 2009 to 19 NOV 2009

SC-2, 22 OCT 2009 to 19 NOV 2009