

TACAN SHP Chan 45	APCH CRS 144°	Rwy Idg 13,101 TDZE 998 Arpt Elev 1019
----------------------	------------------	--

JAL-454 [USAF]

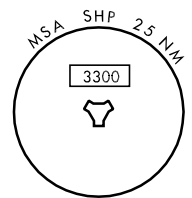
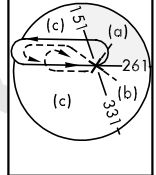
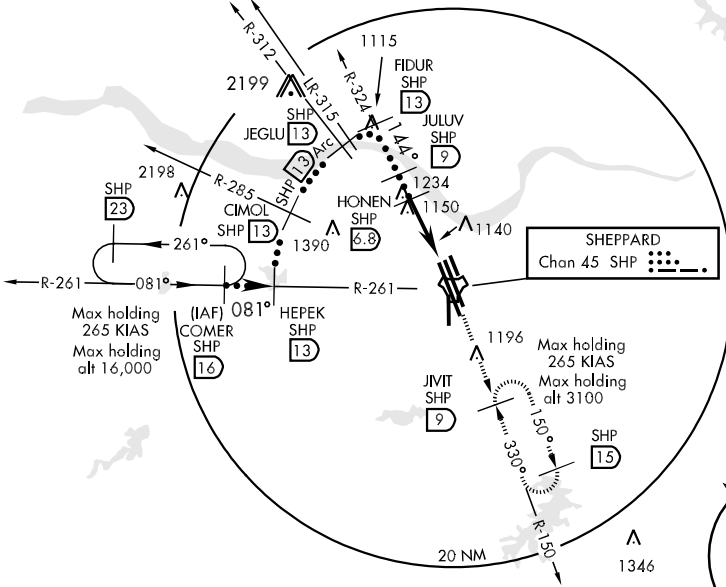
WICHITA FALLS/SHEPPARD AFB/WICHITA FALLS MUNI (KSPS)

▼ \* When ALS inop, increase CAT CD vis to 1½ miles, CAT E vis to 1½ miles.  
\*\* Circling not authorized W of Rwy 15R-33L.

MALSRL (A5) MISSED APPROACH: Climb and maintain 3100 intercept SHP TACAN R-150 to SHP R-150/9 DME (JIVIT) and hold.

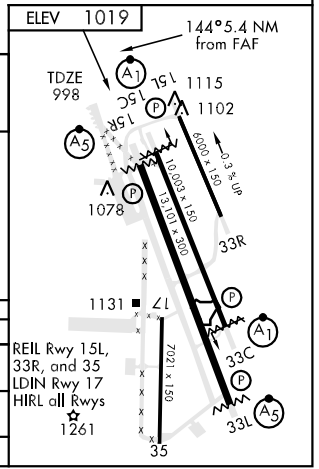
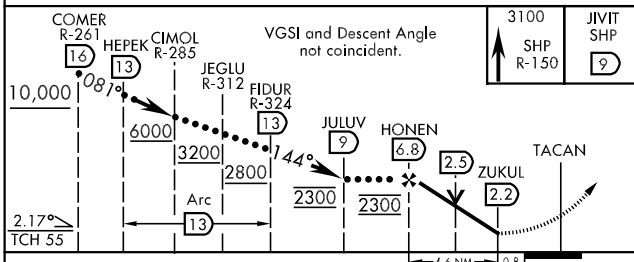
ATIS ★ 132.05 269.9	SHEPPARD APP CON 118.2 269.025	SHEPPARD TOWER ★ (CTAF) 119.75 279.525	GND CON 125.5 289.4	CLNC DEL 121.2 282.225	ASOS	ASR/PAR
------------------------	-----------------------------------	---	------------------------	---------------------------	------	---------

\*\*\* When ALS inop, increase CAT CDE vis to ¾ miles.



CAUTION:  
Do not confuse parallel  
taxiway with Rwy 15R-33L.

EMERG SAFE ALT 100 NM 4600



CATEGORY	C	D	E
S-15R *	1420-¾	422 (500-¾)	1420-1 422 (500-1)
CIRCLING **	1480-1½ 461 (500-½)	1580-2 561 (600-2)	2080-3 1061 (1100-3)
S-PAR 15R ***	1198-½	200 (200-½)	GS 3.0°

SC-2, 22 OCT 2009 to 19 NOV 2009

SC-2, 22 OCT 2009 to 19 NOV 2009