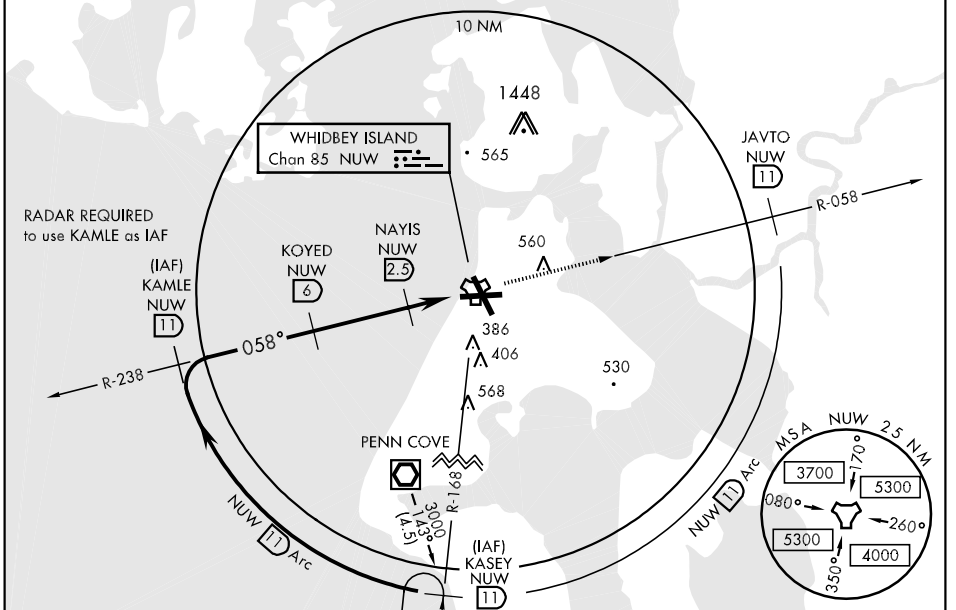


TACAN Chan 85	NUW 058°	APCH CRS 058°	Rwy Idg 8000 TDZE 25 Arpt Elev 47	AL-451 [USN]	WHIDBEY ISLAND NAS (AULT FLD) (NUW)
-------------------------	--------------------	-------------------------	---	--------------	-------------------------------------

MISSED APPROACH: Climb to 3000 via R-058 to JAVTO, then arc SE of NUW TACAN via 11 DME Arc to KASEY and hold.

ATIS 134.15 281.5	WHIDBEY APP CON 120.7 270.8 EAST 118.2 285.65 WEST	WHIDBEY TOWER 127.9 340.2	GND CON 121.75 336.4	CLNC DEL 135.1 379.9	ASR/PAR
-----------------------------	--	-------------------------------------	--------------------------------	--------------------------------	---------

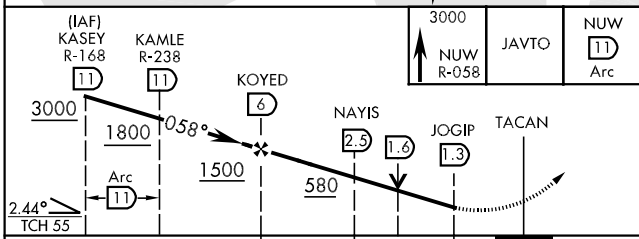
CAUTION:
CAT CD intmed seg length 5 NM



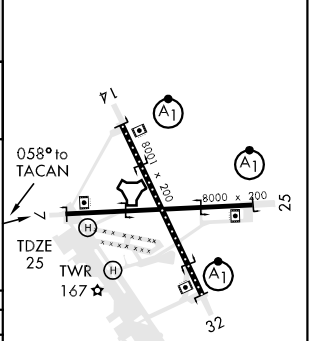
NW-1, 22 OCT 2009 to 19 NOV 2009

NW-1, 22 OCT 2009 to 19 NOV 2009

EMERG SAFE ALT 100 NM 16,500



ELEV 47



CATEGORY	A	B	C	D
S-7	440-1 415 (400-1)	440-1¼ 415 (400-1¼)		
CIRCLING	780-1 733 (800-1)	800-1¼ 753 (800-1¼)	800-2¼ 753 (800-2¼)	860-2¾ 813 (900-2¾)
S-PAR 7	125-½	100	(100-½)	GS 3.00°

REIL Rwy 7-25, 14-32
TDZL/CL Rwy 14-32
HIRL Rwy 7-25, 14-32