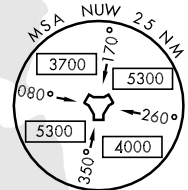
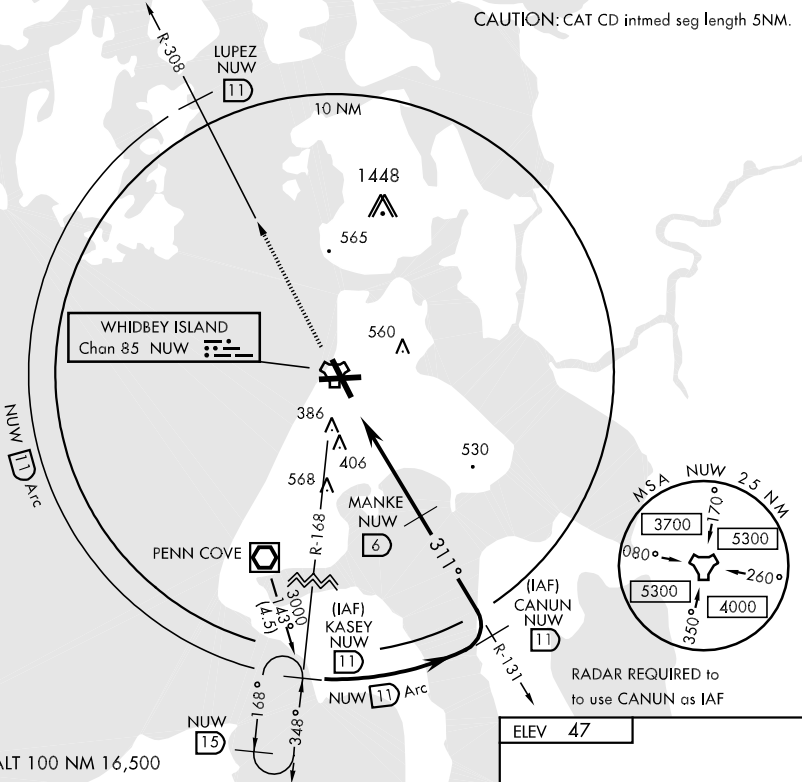


TACAN NUW Chan 85	APCH CRS 311°	Rwy Idg 8001 TDZE 47 Arpt Elev 47	AL-451 [USN]	WHIDBEY ISLAND NAS (AULT FLD) (NUW)
----------------------	------------------	--	--------------	-------------------------------------

▼ * When ALS inop, increase vis CAT AB to 1 mile, CAT C to 1 ¼ Miles, CAT D to 2 miles.
** When ALS inop, increase vis CAT ABCD to ¾ mile.

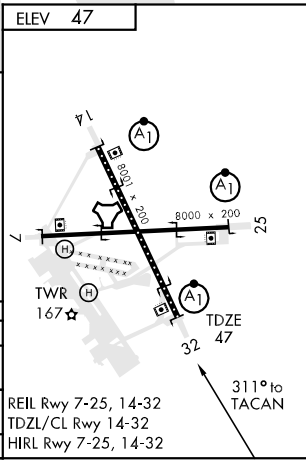
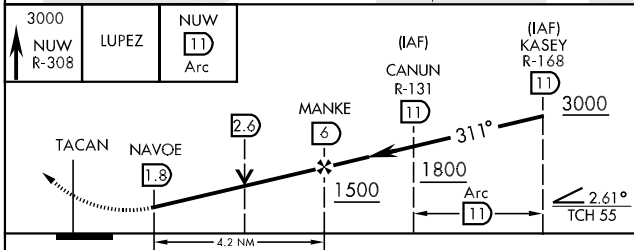
ATIS 134.15 281.5	WHIDBEY APP CON 120.7 270.8 EAST 118.2 285.65 WEST	WHIDBEY TOWER 127.9 340.2	GND CON 121.75 336.4	CLNC DEL 135.1 379.9	ASR/PAR
----------------------	--	------------------------------	-------------------------	-------------------------	---------

CAUTION: CAT CD intmed seg length 5NM.



RADAR REQUIRED to use CANUN as IAF

EMERG SAFE ALT 100 NM 16,500



CATEGORY	A	B	C	D
S-32*	660-½ 613 (700-½)		660-1¼ 613 (700-1¼)	660-1½ 613 (700-1½)
CIRCLING	780-1 733 (800-1)	800-1¼ 753 (800-1¼)	800-2¼ 753 (800-2¼)	860-2¾ 813 (900-2¾)
S-PAR 32**	247-½ 200		(200-½)	GS 3.00°

NW-1, 22 OCT 2009 to 19 NOV 2009

NW-1, 22 OCT 2009 to 19 NOV 2009