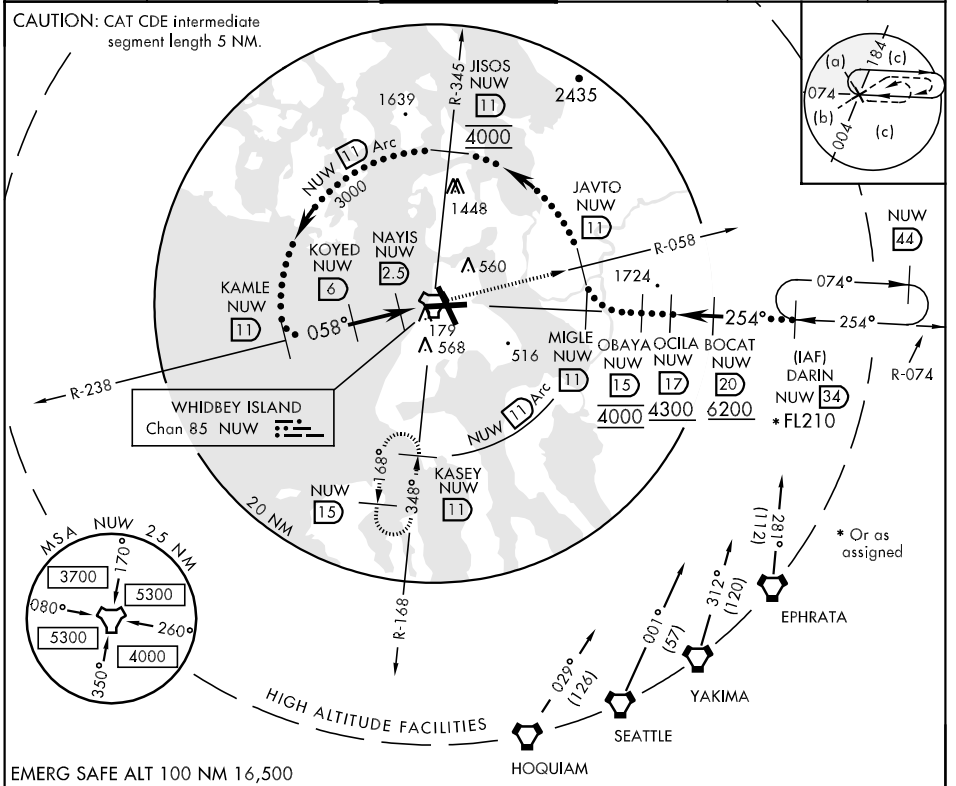


TACAN Chan 85	NUW	APCH CRS 058°	Rwy Idg TDZE Arpt Elev 8000 25 47	JAL-451 [USN]	WHIDBEY ISLAND NAS (AULT FLD) (NUW)
-------------------------	-----	-------------------------	--	---------------	-------------------------------------

▽ MISSED APPROACH: Climb to 3000 via R-058 to JAVTO, then arc SE of NUW TACAN via 11 DME Arc to KASEY and hold.

ATIS 134.15 281.5	WHIDBEY APP CON 120.7 270.8 EAST 118.2 285.65 WEST	WHIDBEY TOWER 127.9 340.2	GND CON 121.75 336.4	CLNC DEL 135.1 379.9	ASR/PAR
-----------------------------	--	-------------------------------------	--------------------------------	--------------------------------	---------



NW-1, 22 OCT 2009 to 19 NOV 2009

EMERG SAFE ALT 100 NM 16,500

CATEGORY	C		D		E	
	440-1¼	415 (400-1¼)	440-1½	415 (400-1½)	1100-3	1053 (1100-3)
S-7	800-2¼	813 (900-2¾)	860-2¾	813 (900-2¾)	1100-3	1053 (1100-3)
CIRCLING	753 (800-2¼)	813 (900-2¾)	860-2¾	813 (900-2¾)	1100-3	1053 (1100-3)
S-PAR 7	125-½		100 (100-½)	GS 3.00°		

3000	JAVTO	NUW (11) Arc
↑	R-058	

ELEV 47	71	(A1)
058° to TACAN	8001 x 200	(A1)
TDZE 25	320	(A1)
TWR 167	32	(A1)

REIL Rwy 7-25, 14-32
TDZ/CL Rwy 14-32
HIRL Rwy 7-25, 14-32