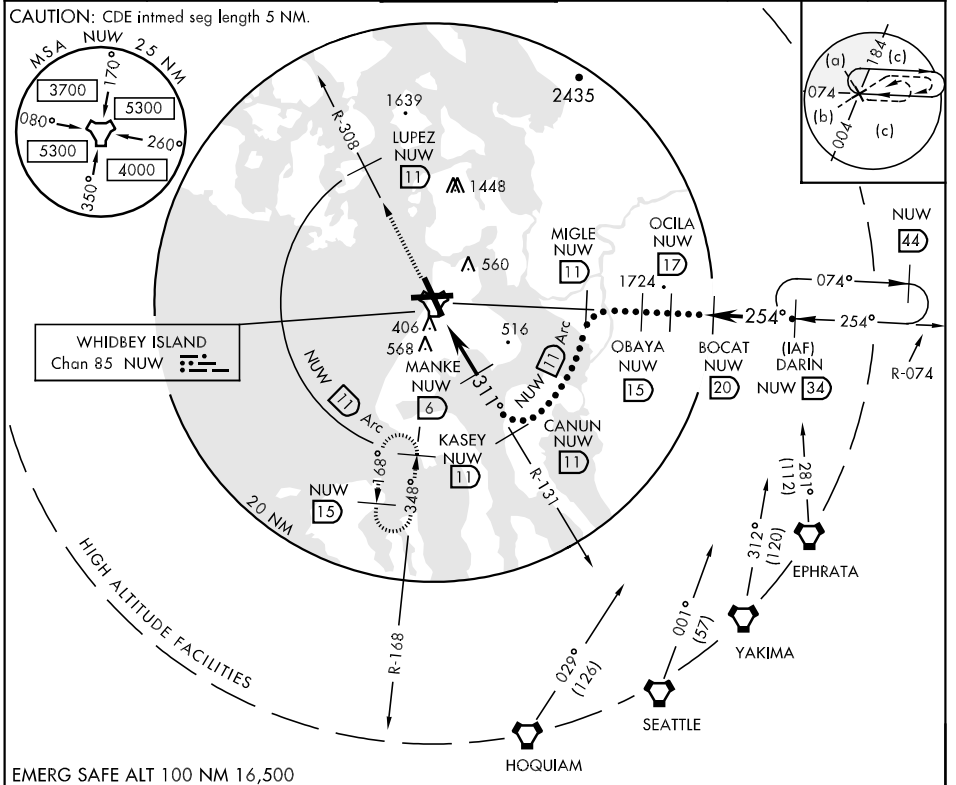


TACAN NUW Chan 85	APCH CRS 311°	Rwy Idg TDZE 8001 47	JAL-451 [USN]	WHIDBEY ISLAND NAS (AULT FLD) (NUW)
----------------------	------------------	----------------------------	---------------	-------------------------------------

▼ *When ALS inop, increase vis CAT C to 1 3/4 miles, CAT D to 2 miles, CAT E to 2 1/4 miles.
 ** When ALS inop, increase vis CAT CDE to 3/4 mile.

ATIS 134.15 281.5	WHIDBEY APP CON 120.7 270.8 EAST 118.2 285.65 WEST	WHIDBEY TOWER 127.9 340.2	GND CON 121.75 336.4	CLNC DEL 135.1 379.9	ASR/PAR
----------------------	--	------------------------------	-------------------------	-------------------------	---------



NW-1, 22 OCT 2009 to 19 NOV 2009

NW-1, 22 OCT 2009 to 19 NOV 2009

EMERG SAFE ALT 100 NM 16,500	3000	LUPEZ NUW R-308	NUW 11 Arc	BOCAT (IAF) DARIN R-074 NUW 34	ELEV 47					
TACAN	NAVOE 1.8	MANKE 2.6	CANUN R-131 11	MIGLE R-074 11	OBAYA 15	OCILA 17	BOCAT 20	(IAF) DARIN R-074 34	NUW 34	*FL 210
	1500	3000	4000	4000	4300	6200	6200	6200	6200	*Or as assigned
	4.2 NM	1.8	2.6	6	11	11	15	17	20	25.4°
										2.61° TCH 55
CATEGORY	C	D	E							
S-32*	660-1 1/4 613 (700-1 1/4)	660-1 1/2 613 (700-1 1/2)	660-1 3/4 613 (700-1 3/4)							
CIRCLING	800-2 1/4 753 (800-2 1/4)	860-2 3/4 813 (900-2 3/4)	1100-3 1053 (1100-3)							
S-PAR 32**	247-1/2	200 (200-1/2)	GS 3.00°							

