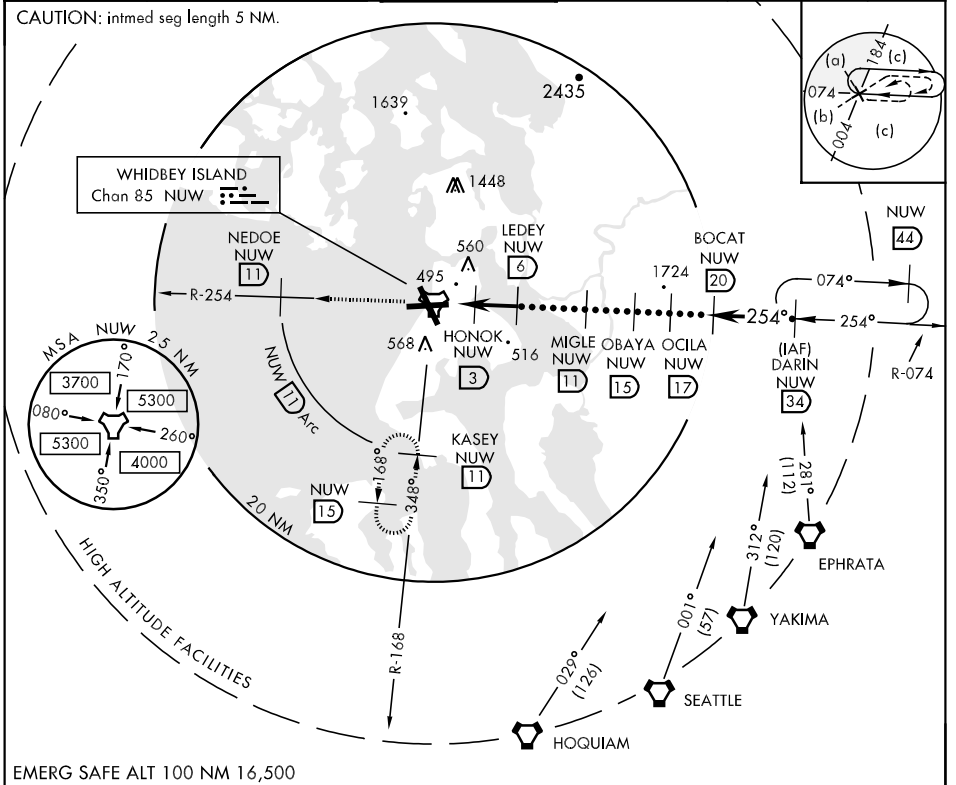


TACAN NUW Chan 85	APCH CRS 254°	Rwy Idg 8000 TDZE 28 Arpt Elev 47	JAL-451 [UN]	WHIDBEY ISLAND NAS (AULT FLD) (NUW)
-------------------	---------------	---	--------------	-------------------------------------

▼ * When ALS inop, increase vis CAT C to 2 miles, CAT D to 2¼ miles, CAT E to 2½ miles.
 ** When ALS inop, increase vis CAT CDE to ¾ miles.

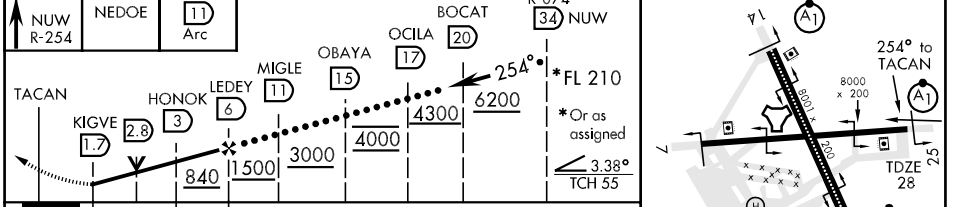
ATIS 134.15 281.5	WHIDBEY APP CON 120.7 270.8 118.2 285.65	EAST WEST	WHIDBEY TOWER 127.9 340.2	GND CON 121.75 336.4	CLNC DEL 135.1 379.9	ASR/PAR
-----------------------------	--	-----------	-------------------------------------	--------------------------------	--------------------------------	---------



NW-1, 22 OCT 2009 to 19 NOV 2009

NW-1, 22 OCT 2009 to 19 NOV 2009

EMERG SAFE ALT 100 NM 16,500



CATEGORY	C	D	E
S-25*	760-1½ 732 (800-1½)	760-1¾ 732 (800-1¾)	760-2 732 (800-2)
CIRCLING	800-2¼ 753 (800-2¼)	860-2¾ 813 (900-2¾)	1100-3 1053 (1100-3)
S-PAR 25**	228-½	200 (200-½)	GS 3.00°