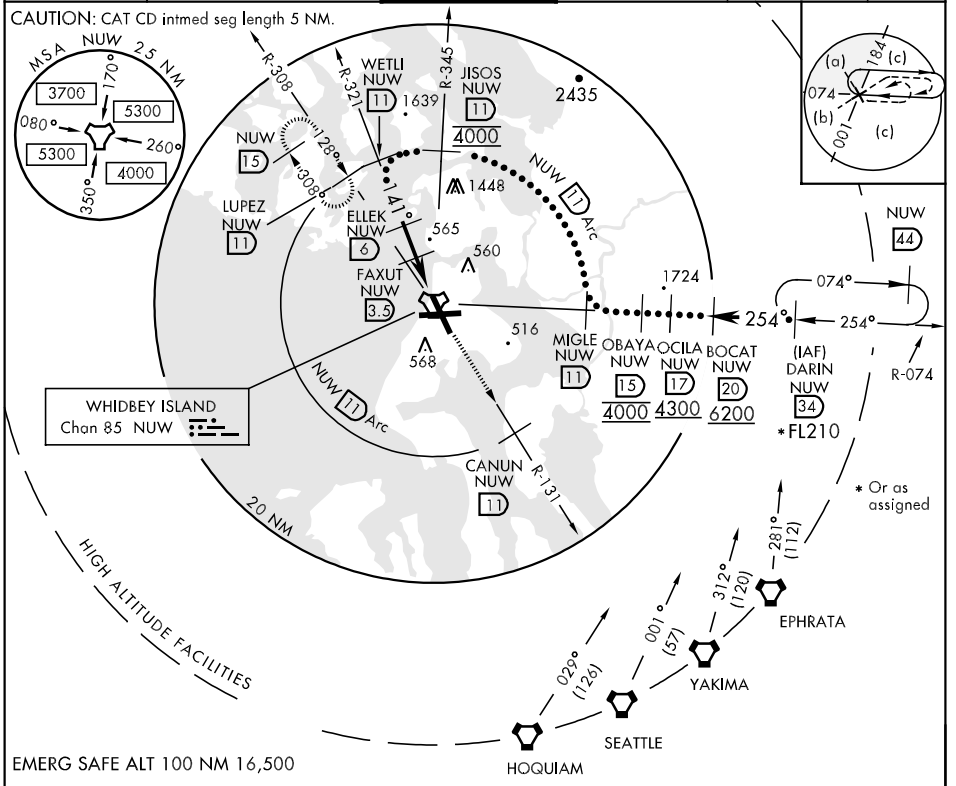


TACAN NUW Chan 85	APCH CRS 141°	Rwy Idg TDZE 39 Arpt Elev 47	8001	JAL-451 [USN]	WHIDBEY ISLAND NAS (AULT FLD) (NUW)
----------------------	------------------	------------------------------------	------	---------------	-------------------------------------

▼ * When ALS inop, increase vis CAT C to 1½ miles, CAT D to 1¾ miles, CAT E to 2 miles.
 ** When ALS inop, increase PAR CAT CDE to ½ mile.

ATIS 134.15 281.5	WHIDBEY APP CON 120.7 270.8 EAST 118.2 285.65 WEST	WHIDBEY TOWER 127.9 340.2	GND CON 121.75 336.4	CLNC DEL 135.1 379.9	ASR/PAR
----------------------	--	------------------------------	-------------------------	-------------------------	---------



WETLI R-321 (11)	4000 NUW R-131	CANUN (11) Arc	ELEV 47
3000	1800	1020	141° to TACAN
2.88° TCH 55	2.5 NM	2.7 NM	TDZE 39
WETLI R-321 (11)	ELLEK (6)	FAXUT (3.5)	JOVPO (1.7)
TACAN (0.8)			
CATEGORY	C	D	E
S-14 *	620-1 581 (600-1)	620-1¼ 581 (600-1¼)	620-1½ 581 (600-1½)
CIRCLING	800-2¼ 753 (800-2¼)	860-2¾ 813 (900-2¾)	1100-3 1053 (1100-3)
S-PAR 14 **	139-¼	100 (100-¼)	GS 3.00°

REIL Rwy 7-25, 14-32
 TDZ/CL Rwy 14-32
 HIRL Rwy 7-25, 14-32

NW-1, 22 OCT 2009 to 19 NOV 2009

NW-1, 22 OCT 2009 to 19 NOV 2009