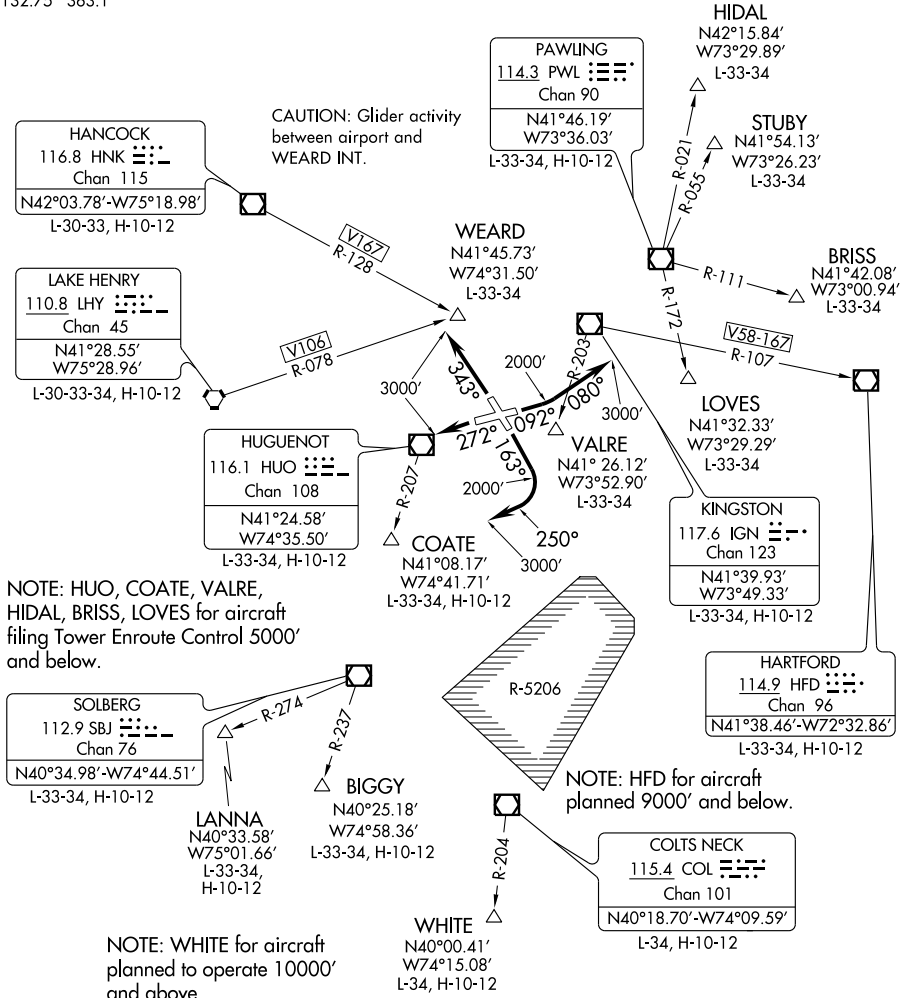


STEWART FIVE DEPARTURE

SL-450 (FAA)

NEWBURGH/STEWART INTL (SWF)
NEWBURGH, NEW YORK

STEWART TOWER
121.0 254.4
NEW YORK DEP CON
132.75 363.1



NOTE: HUGUENOT, COATE, VALRE, HIDAL, BRISS, LOVES, for aircraft filing Tower Enroute Control 5000' and below.

SOLBERG
112.9 SBJ
Chan 76
N40°34.98'-W74°44.51'
L-33-34, H-10-12

LANNA
N40°33.58'
W75°01.66'
L-33-34,
H-10-12

BIGGY
N40°25.18'
W74°58.36'
L-33-34, H-10-12

WHITE
N40°00.41'
W74°15.08'
L-34, H-10-12

COLTS NECK
115.4 COL
Chan 101
N40°18.70'-W74°09.59'
L-34, H-10-12

HARTFORD
114.9 HFD
Chan 96
N41°38.46'-W72°32.86'
L-33-34, H-10-12

NOTE: HFD for aircraft planned 9000' and below.

NOTE: WHITE for aircraft planned to operate 10000' and above.

TAKE-OFF MINIMUMS

- Rwy 9: Standard with ATC climb of 225' per NM to 2700.
- Rwy 16: Standard with minimum obstacle climb of 255' per NM to 2000, ATC climb of 300' per NM to 2000.
- Rwy 27: 300-1 or Standard with minimum climb of 366' per NM to 800.
- Rwy 34: 300-1¼ or Standard with minimum climb of 503' per NM to 800.

NOTE: RADAR required.
NOTE: Chart not to scale.

(NARRATIVE ON FOLLOWING PAGE)

NE-2, 22 OCT 2009 to 19 NOV 2009

NE-2, 22 OCT 2009 to 19 NOV 2009