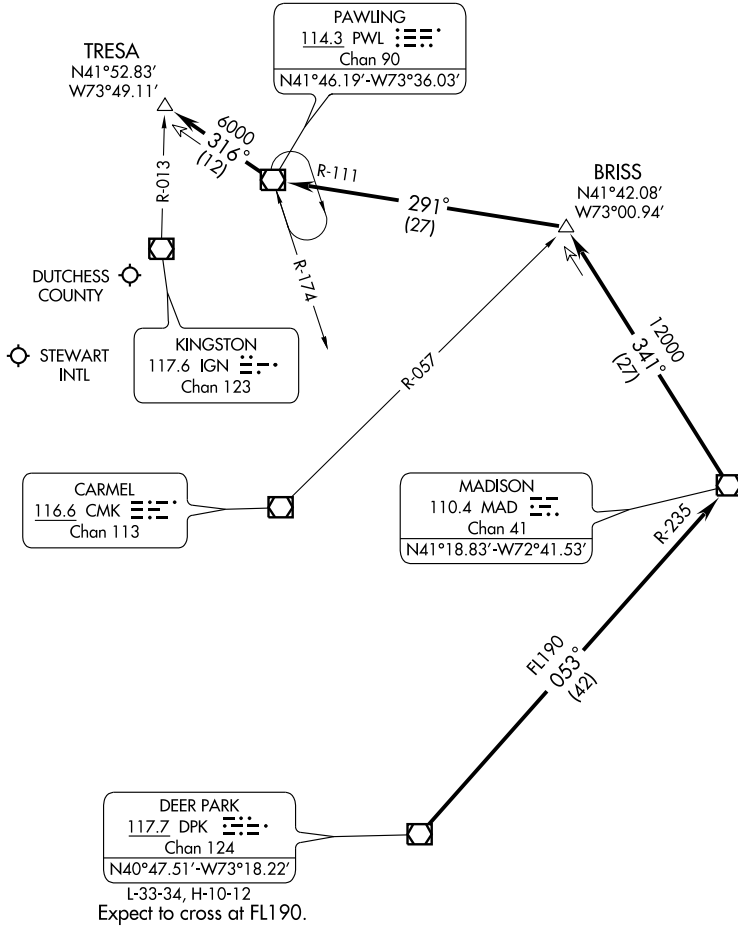


# HUDSON ONE ARRIVAL

NEW YORK APP CON  
132.75 363.1  
STEWART INTL ATIS  
124.575  
DUTCHESS COUNTY ATIS  
126.75



NOTE: Chart not to scale.

... From over DPK VOR/DME via DPK R-053 and MAD R-235 to MAD VOR/DME, then via MAD R-341 to BRISS INT, then via PWL R-111 to PWL VOR/DME, then via PWL R-316 to TRESA INT. Expect RADAR vectors to final approach course.

NE-2, 22 OCT 2009 to 19 NOV 2009

NE-2, 22 OCT 2009 to 19 NOV 2009

# HUDSON ONE ARRIVAL