


WEST PALM BEACH, FLORIDA

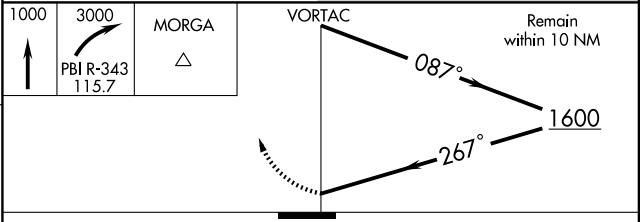
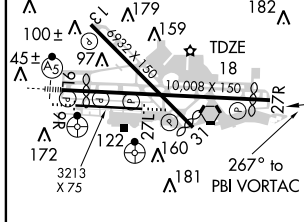
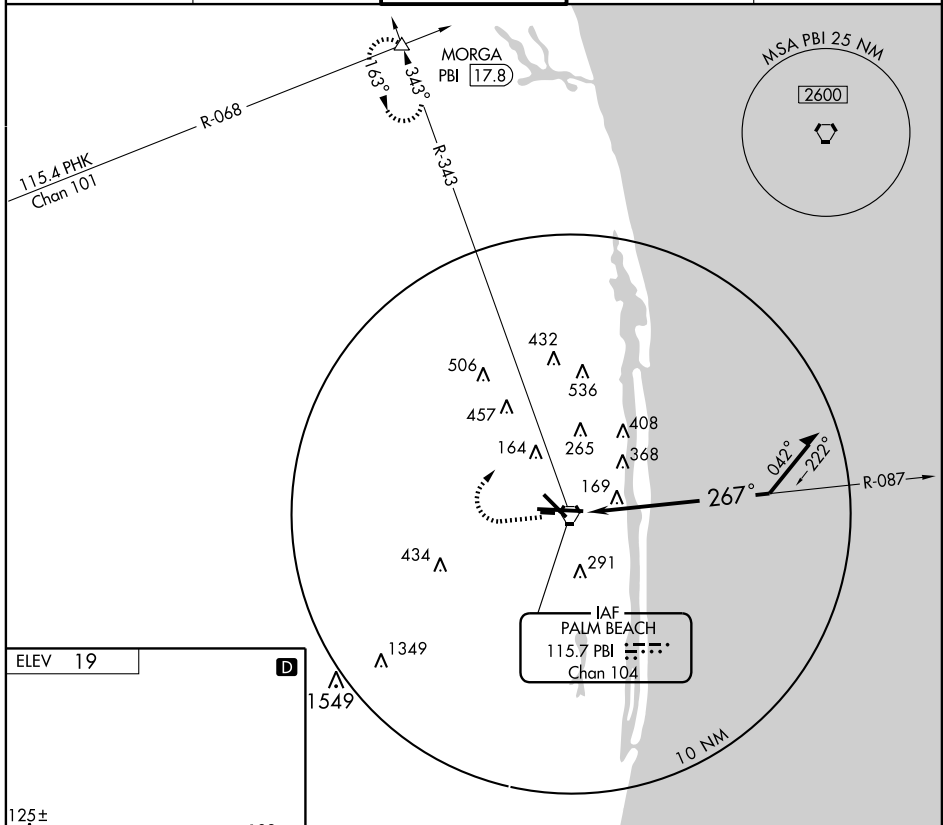
AL-449 (FAA)

VORTAC PBI	APP CRS	Rwy Idg	<b>9189</b>
<b>115.7</b>	<b>267°</b>	TDZE	<b>18</b>
Chan <b>104</b>		Apt Elev	<b>19</b>

# VOR RWY 27R

WEST PALM BEACH/ PALM BEACH INTL (PBI)

 MISSED APPROACH: Climb to 1000 then climbing right turn to 3000 via PBI R-343 to MORGA Int/PBI 17.8 DME and hold.				
ATIS <b>123.75</b>	PALM BEACH APP CON <b>124.6 317.4</b>	<b>PALM BEACH TOWER</b> <b>119.1 257.8</b>	GND CON <b>121.9 257.8</b>	CLNC DEL <b>121.6</b>



CATEGORY	A	B	C	D
S-27R	620-1	602 (700-1)	620-1 <sup>3</sup> / <sub>4</sub> 602 (700-1 <sup>3</sup> / <sub>4</sub> )	620-2 602 (700-2)
CIRCLING	620-1	601 (700-1)	640-1 <sup>3</sup> / <sub>4</sub> 621 (700-1 <sup>3</sup> / <sub>4</sub> )	680-2 661 (700-2)

WEST PALM BEACH, FLORIDA  
Amdt 2A 09183

26° 41' N-80° 06' W

WEST PALM BEACH/ PALM BEACH INTL (PBI)

# VOR RWY 27R

SE-3, 22 OCT 2009 to 19 NOV 2009

SE-3, 22 OCT 2009 to 19 NOV 2009