

WEST PALM BEACH, FLORIDA

AL-448 (FAA)

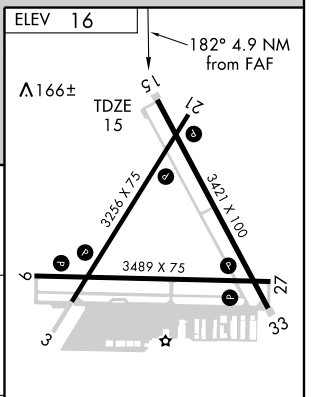
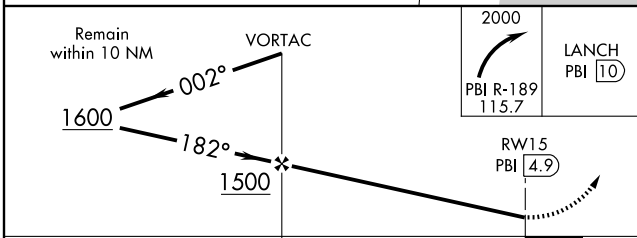
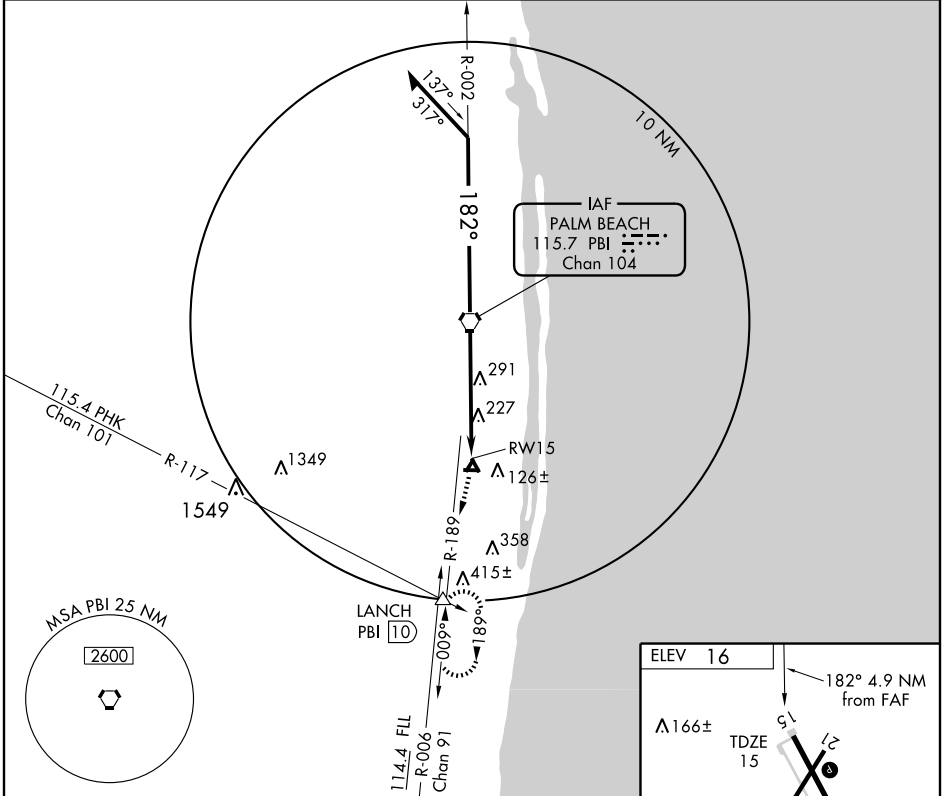
VORTAC PBI 115.7 Chan 104	APP CRS 182°	Rwy Idg TDZE 15 Apt Elev 16	3421
---	------------------------	---	-------------

VOR or GPS RWY 15

WEST PALM BEACH / PALM BEACH COUNTY PARK (L.N.A)

<p>▼ Use Palm Beach altimeter setting minimums.</p> <p>▲ NA</p>	<p>MISSED APPROACH: Climbing right turn to 2000 via PBI R-189 to LANCH Int/PBI 10 DME and hold.</p>
---	---

<p>AWOS-3 119.925</p>	<p>PALM BEACH APP CON 127.35 317.4</p>	<p>UNICOM 122.7 (CTAF) 0</p>
----------------------------------	---	--



CATEGORY	A	B	C	D
S-15	620-1	605 (700-1)	620-1¼ 605 (700-1¼)	NA
CIRCLING	660-1	644 (700-1)	660-1¼ 644 (700-1¼)	NA

MIRL Rwy 3-21, 9-27 and 15-33 **0**

FAF to MAP 4.9 NM

Knots	60	90	120	150	180
Min:Sec	4:54	3:16	2:27	1:58	1:38

WEST PALM BEACH, FLORIDA
Amdt 2C 09127

WEST PALM BEACH / PALM BEACH COUNTY PARK (L.N.A)
26°36'N - 80°05'W
VOR or GPS RWY 15

SE-3, 22 OCT 2009 to 19 NOV 2009

SE-3, 22 OCT 2009 to 19 NOV 2009