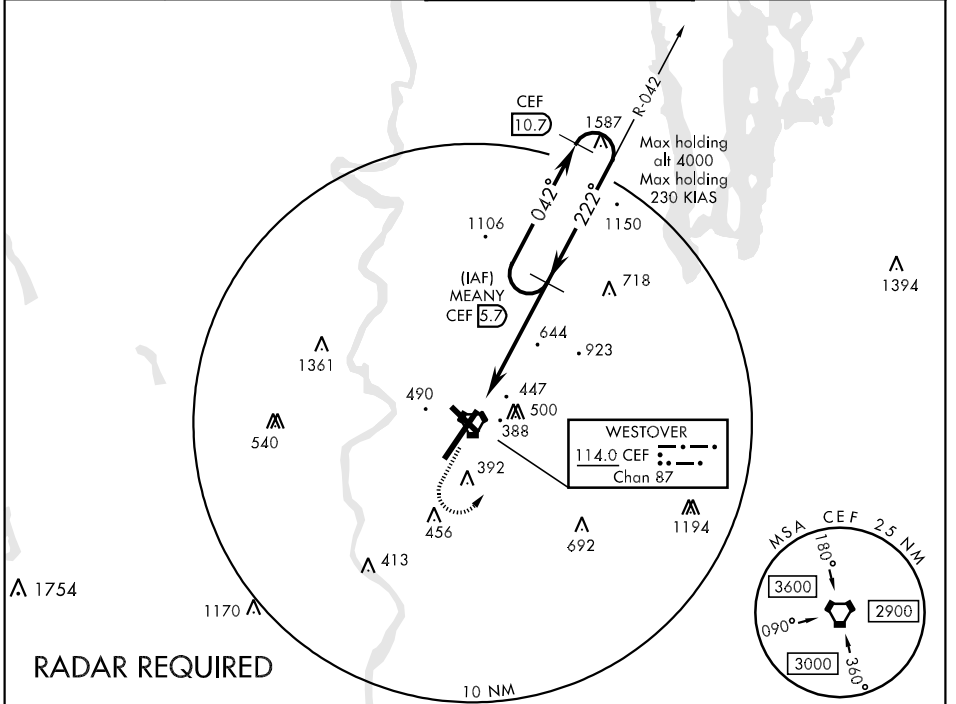


VORTAC CEF 114.0 Chan 87	APCH CRS 222°	Rwy ldg 11,597' TDZE 241 Arpt Elev 241	AL-447 [USAF]	WESTOVER ARB/METROPOLITAN (KCEF)
----------------------------------------------	-------------------------	-------------------------------------------------------------------	---------------	----------------------------------

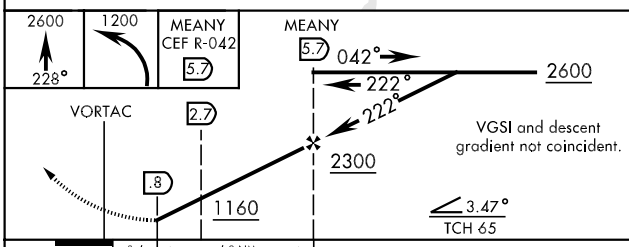
CAUTION: IFR operations prohibited to Rwy 33 at night.
 * When ALS inop, increase CAT AB RVR to 50 and vis to 1 mile, CAT C RVR to 60 and vis to 1¼ miles, CAT DE vis to 1½ miles.

ALSF-1 MISSED APPROACH: Climb to 2600 tracking 228°, passing 1200, turn left direct MEANY and hold.

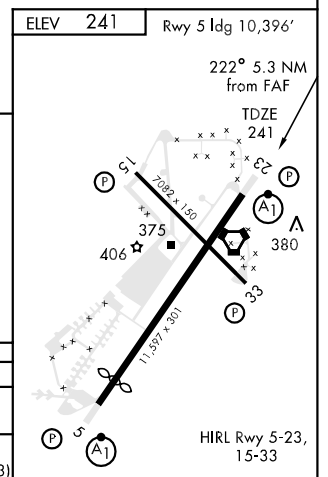
ATIS ★ 114.0 138.1	BRADLEY APP CON 125.35 281.5	WESTOVER TOWER ★ 134.85 (CTAF) 348.75	GND CON 118.35 275.8
------------------------------	----------------------------------------	-------------------------------------------------	--------------------------------



EMERG SAFE ALT 100 NM 6300



CATEGORY	A	B	C	D	E
S-23 *	700/24 459 (500-½)		700/40 459 (500-¾)	700/50 459 (500-1)	
CIRCLING	800-1 559 (600-1)		800-1½ 559 (600-½)	800-2 559 (600-2)	1240-3 999 (1000-3)



NE-1, 22 OCT 2009 to 19 NOV 2009

NE-1, 22 OCT 2009 to 19 NOV 2009