

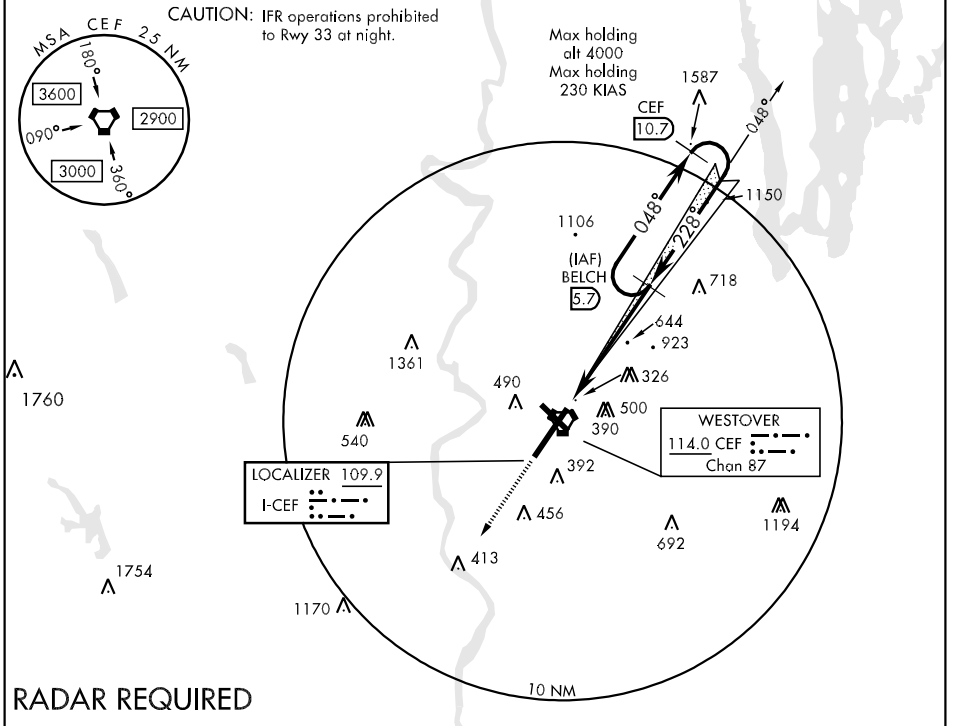
LOC I-CEF 109.9	APCH CRS 228°	Rwy ldg 11,597' TDZE 241 Arpt Elev 241	AL-447 [USAF]	WESTOVER ARB/METROPOLITAN (KCEF)
---------------------------	-------------------------	---	---------------	----------------------------------

* When ALS inop, increase RVR to 40 and vis to ¾ mile.
 ** When ALS inop, increase CAT AB RVR to 50 and vis to 1 mile, CAT C RVR TO 60 vis to 1¼ miles, CAT DE vis to 1½ miles.

ALS-F1

MISSED APPROACH: Climb to 3000 tracking 228°, expect RADAR vectors.

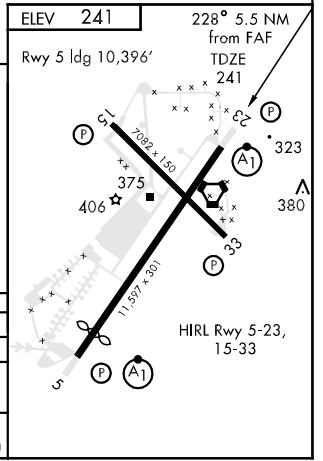
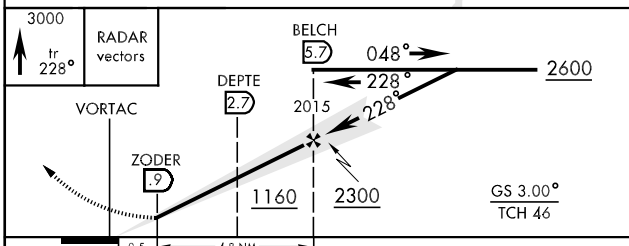
ATIS ★ 114.0 138.1	BRADLEY APP CON 125.35 281.5	WESTOVER TOWER ★ 134.85 (CTAF) 348.75	GND CON 118.35 275.8
------------------------------	--	---	--------------------------------



NE-1, 22 OCT 2009 to 19 NOV 2009

NE-1, 22 OCT 2009 to 19 NOV 2009

EMERG SAFE ALT 100 NM 6300



CATEGORY	A	B	C	D	E
S-ILS 23*	441/24		200	(200-½)	
S-LOC/** DME 23	700/24	459 (500-½)	700/40 459(500-¾)	700/50	459 (500-1)
CIRCLING	800-1	559 (600-1)	800-1½ 559(600-1½)	800-2 559(600-2)	1240-3 999(1000-3)