

LOC I-GWJ 109.9	APCH CRS 048°	Rwy Idg 10,396' TDZE 237 Arpt Elev 241	AL-447 [USAF]	WESTOVER ARB/METROPOLITAN (KCEF)
---------------------------	-------------------------	---	---------------	----------------------------------

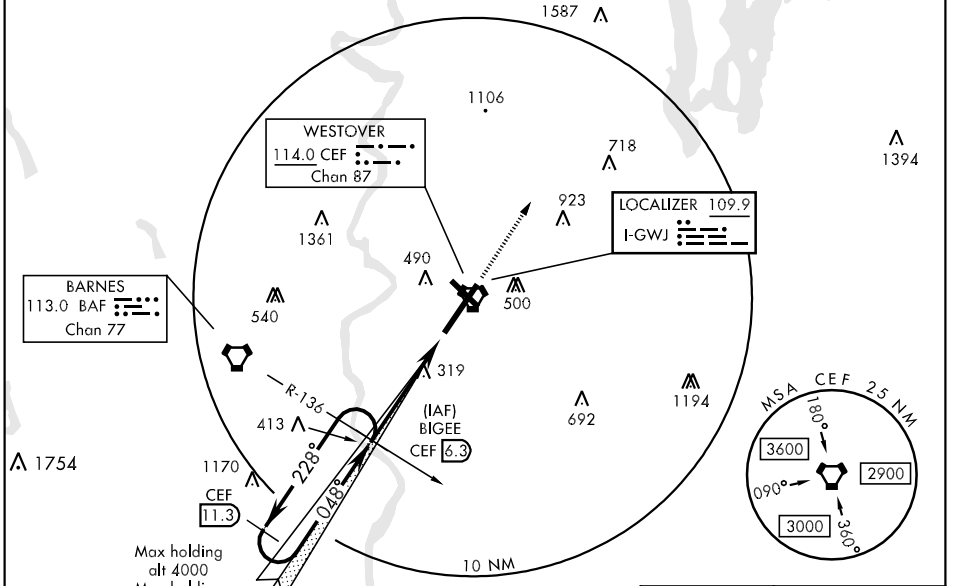
CAUTION: IFR operations prohibited to Rwy 33 at night.
 * When ALS inop, increase RVR to 40 and vis to ¾ mile.
 ** When ALS inop, increase CAT ABC RVR to 50 and vis to 1 mile, CAT DE RVR to 60 and vis to 1¼ miles.



MISSED APPROACH: Climb to 3000 tracking 048°, expect RADAR vectors.

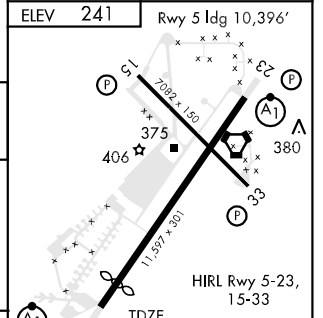
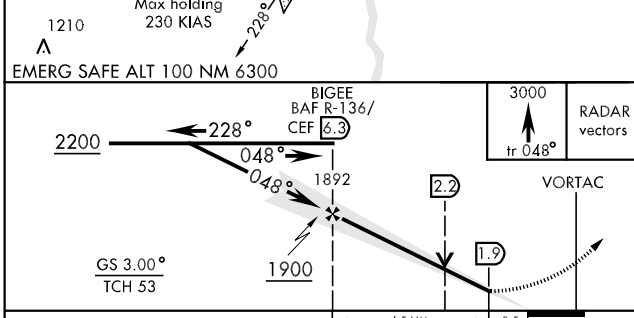
ATIS ★ 114.0 138.1	BRADLEY APP CON 125.35 281.5	WESTOVER TOWER ★ 134.85 (CTAF) 348.75	GND CON 118.35 275.8
------------------------------	--	---	--------------------------------

RADAR REQUIRED



NE-1, 22 OCT 2009 to 19 NOV 2009

NE-1, 22 OCT 2009 to 19 NOV 2009



CATEGORY	A	B	C	D	E
	437/24		200	(200-½)	
S-ILS 5 *	437/24		200	(200-½)	
S-LOC 5 **	580/24	343 (400-½)	580/40	343	(400-¾)
CIRCLING	800-1	559 (600-1)	800-1½	800-2	1240-3
	559 (600-1½)		559 (600-2)	999	(1000-3)

FAF to MAP 4.5 NM					
Knots	60	90	120	150	180
Min:Sec	4:30	3:00	2:15	1:48	1:30