

VORTAC BAF <b>113.0</b> Chan <b>77</b>	APCH CRS <b>208°</b>	Rwy Idg TDZE Arpt Elev <b>9000</b> <b>271</b> <b>271</b>
--	-------------------------	---

JAL-446 [USAF]

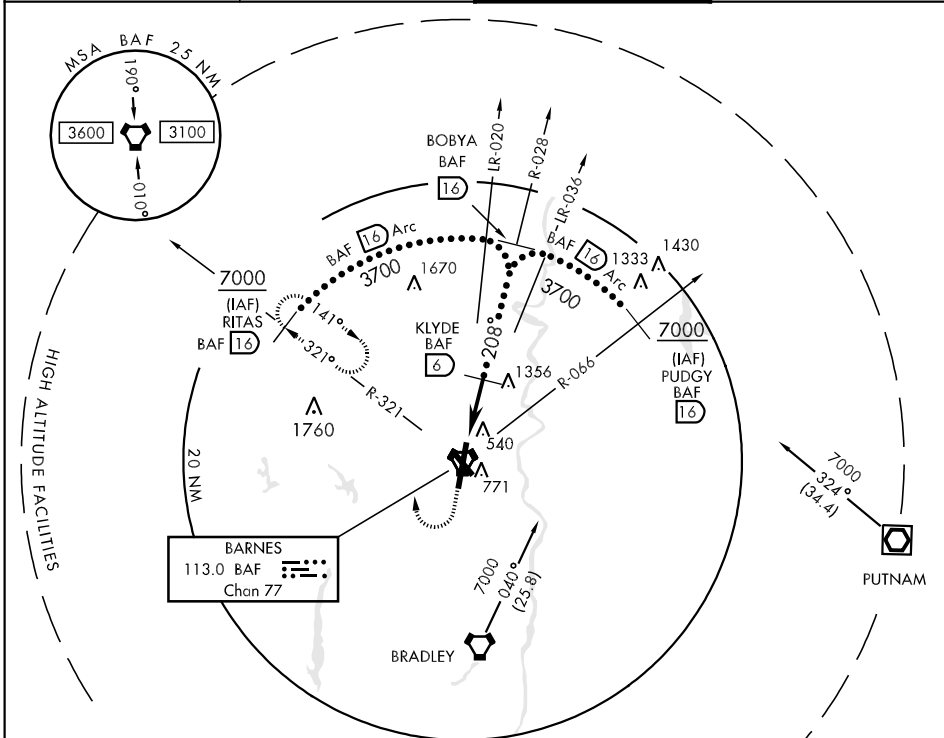
WESTFIELD/BARNES MUNI (BAF)

★ When local altimeter setting not received, use Bradley Intl. altimeter setting and increase all MDAs 60' and S-20 CAT E vis ¼ mile.



MISSED APPROACH: Climb to 1300, then climbing right turn to 4000 via hdg 010° and BAF VORTAC R-321 to RITAS and hold.

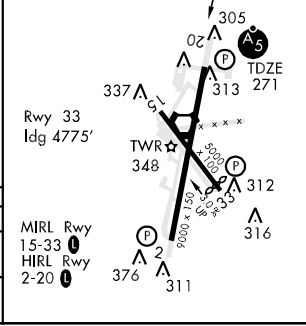
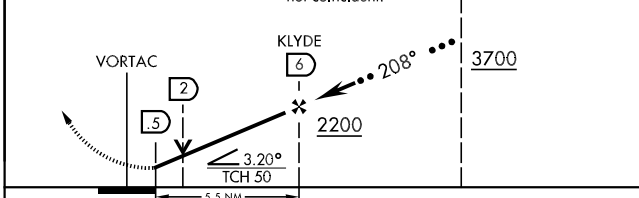
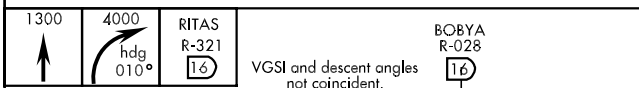
ATIS <b>263.15</b>	BRADLEY APP CON <b>125.35 281.5</b>	WESTFIELD TOWER ★ <b>118.9 (CTAF) 0 251.1</b>	GND CON <b>121.7 289.4</b>
-----------------------	--	--	-------------------------------



NE-1, 22 OCT 2009 to 19 NOV 2009

NE-1, 22 OCT 2009 to 19 NOV 2009

EMERG SAFE ALT 100 NM 7000



CATEGORY	C	D	E
S-20 *	800/50 529 (600-1)	800/60 529 (600-1¼)	
CIRCLING	1160-2¾ 889 (900-2¾)	1160-3 889 (900-3)	1500-3 1229 (1300-3)