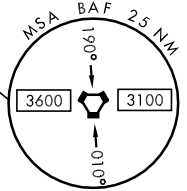


LOC I-BAF 111.9	APCH CRS 204°	Rwy Idg TDZE Arpt Elev 9000 271 271	JAL-446 [USAF]	WESTFIELD/BARNES MUNI (BAF)
MALS R A5	MISSED APPROACH: Climb to 1300, then climbing right turn to 4000 direct CTR VOR/DME and hold. (TACAN och climb to 1300, then climbing right turn to 4000 via hdg 010° and BAF VORTAC R-321 to RITAS and hold.)			

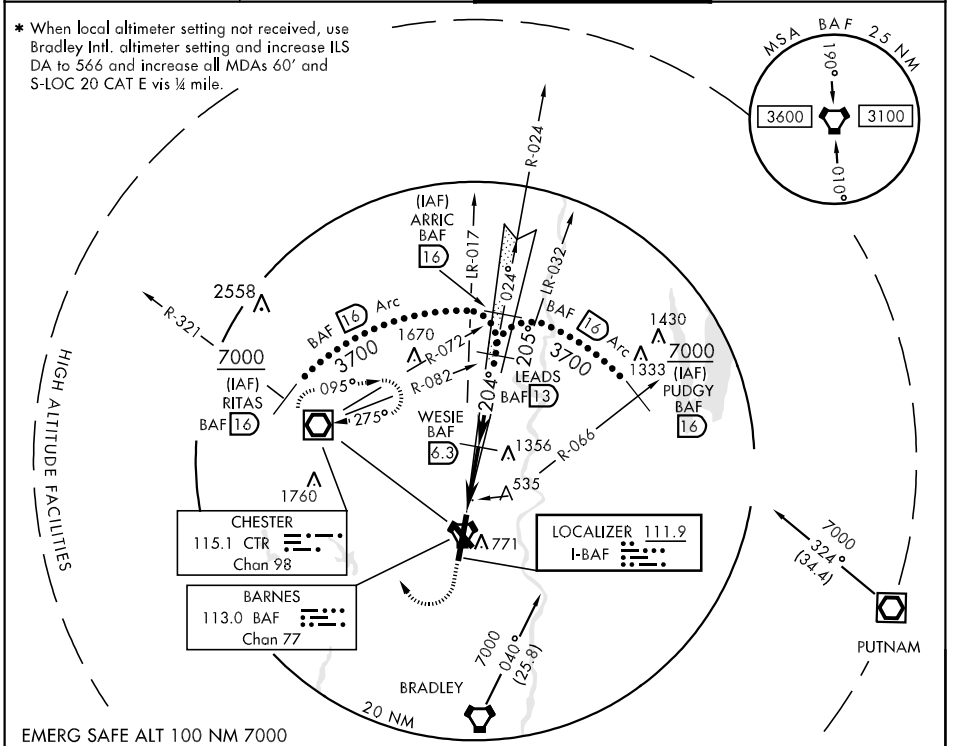
ATIS 263.15	BRADLEY APP CON 125.35 281.5	WESTFIELD TOWER ★ 118.9 (CTAF) 251.1	GND CON 121.7 289.4
-----------------------	--	--	-------------------------------

* When local altimeter setting not received, use Bradley Intl. altimeter setting and increase ILS DA to 566 and increase all MDAs 60' and S-LOC 20 CAT E vis ¼ mile.



NE-1, 22 OCT 2009 to 19 NOV 2009

NE-1, 22 OCT 2009 to 19 NOV 2009



1300	4000	CTR	VGSI and descent angles not coincident.	ARRC R-024	ELEV 271
ILS unusable from 0.6 NM to THLD			LEADS Intcp LOC	16	204° 5.8 NM from FAF
VORTAC			WESIE 2200	13	305° TDZE 271
0.6			2200	2600	332° 02
5.2 NM			GS 3.00°	3700	337° 01
			TCH 50		313
					316
					312
					311
					310
					309
					308
					307
					306
					305
					304
					303
					302
					301
					300
					299
					298
					297
					296
					295
					294
					293
					292
					291
					290
					289
					288
					287
					286
					285
					284
					283
					282
					281
					280
					279
					278
					277
					276
					275
					274
					273
					272
					271
					270
					269
					268
					267
					266
					265
					264
					263
					262
					261
					260
					259
					258
					257
					256
					255
					254
					253
					252
					251
					250
					249
					248
					247
					246
					245
					244
					243
					242
					241
					240
					239
					238
					237
					236
					235
					234
					233
					232
					231
					230
					229
					228
					227
					226
					225
					224
					223
					222
					221
					220
					219
					218
					217
					216
					215
					214
					213
					212
					211
					210
					209
					208
					207
					206
					205
					204
					203
					202
					201
					200
					199
					198
					197
					196
					195
					194
					193
					192
					191
					190
					189
					188
					187
					186
					185
					184
					183
					182
					181
					180
					179
					178
					177
					176
					175
					174
					173
					172
					171
					170
					169
					168
					167
					166
					165
					164
					163
					162
					161
					160
					159
					158
					157
					156
					155
					154
					153
					152
					151
					150
					149
					148
					147
					146
					145
					144
					143
					142
					141
					140
					139
					138
					137
					136
					135
					134
					133
					132
					131
					130
					129
					128
					127
					126
					125
					124
					123
					122
					121
					120
					119
					118
					117
					116
					115
					114
					113
					112
					111
					110
					109
					108
					107
					106
					105
					104
					103
					102
					101
					100
					99
					98
					97
					96
					95
					94
					93
					92
					91
					90
					89
					88
					87
					86
					85
					84
					83
					82
					81
					80
					79
					78
					77
					76
					75
					74
					73
					72
					71
					70
					69
					68
					67
					66
					65
					64
					63
					62
					61
					60
					59
					58
					57
					56
					55
					54
					53
					52
					51
					50
					49
					48
					47
					46
					45
					44
					43
					42
					41
					40
					39
					38
					37
					36
					35
					34
					33
					32
					31
					30
					29
					28
					27
					26
					25
					24
					23
					22
					21
					20
					19
					18
					17
					16
					15
					14
					13
					12
					11
					10
					9
					8
					7
					6
					5
					4
					3
					2
					1
					0