

# GPS RWY 2

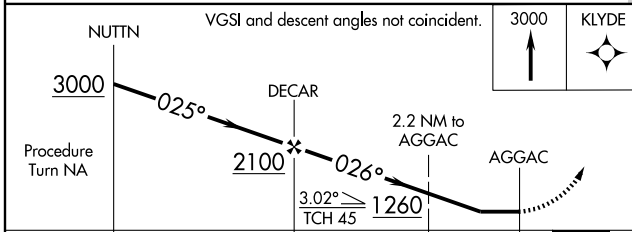
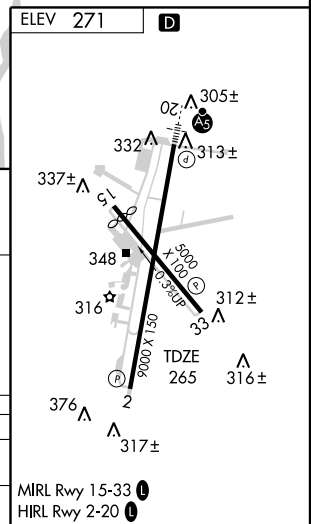
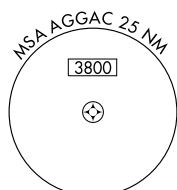
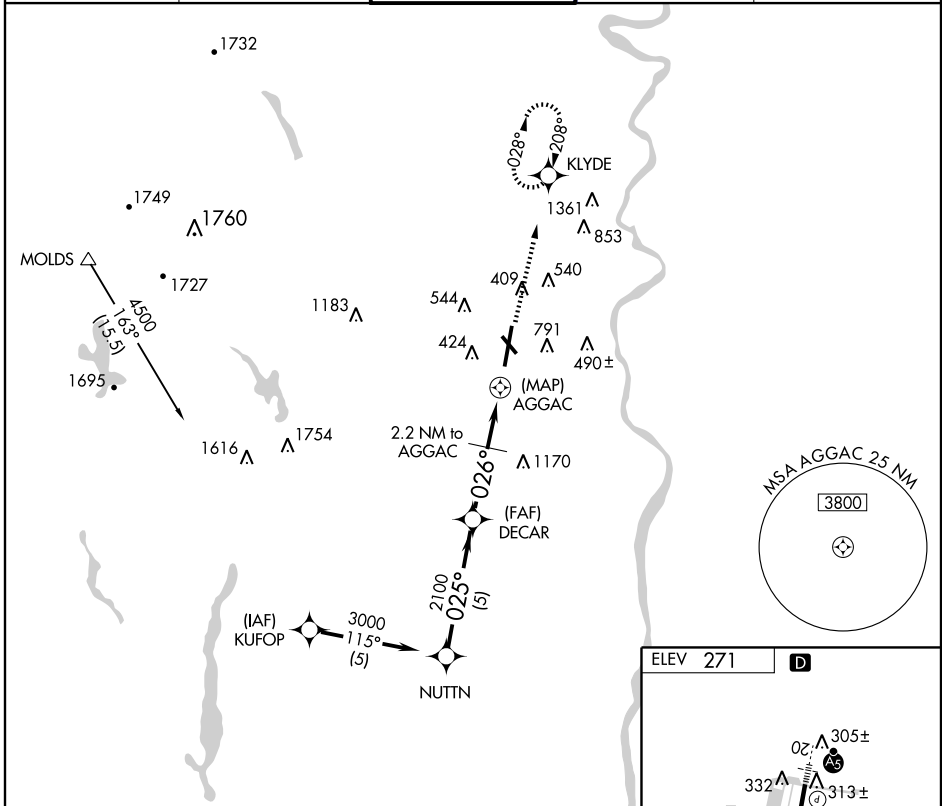
WESTFIELD/BARNES MUNI (BAF)

APP CRS	Rwy Idg	<b>9000</b>
<b>026°</b>	TDZE	<b>265</b>
	Apt Elev	<b>271</b>

**NA**

MISSED APPROACH: Climb to 3000 direct KLYDE WP and hold.

ATIS <b>127.1 263.15</b>	BRADLEY APP CON <b>125.35 281.5</b>	<b>WESTFIELD TOWER*</b> <b>118.9 (CTAF) 0 251.1</b>	GND CON <b>121.7 289.4</b>	CLNC DEL * <b>121.7</b>
-----------------------------	--	--	-------------------------------	----------------------------



CATEGORY	A	B	C	D
S-2	920-1 655 (700-1)		920-1¾ 655 (700-1¾)	920-2 655 (700-2)
CIRCLING	1160-1¼ 889 (900-1¼)		1160-2¾ 889 (900-2¾)	1160-3 889 (900-3)

NE-1, 22 OCT 2009 to 19 NOV 2009

NE-1, 22 OCT 2009 to 19 NOV 2009