

WENDOVER, UTAH

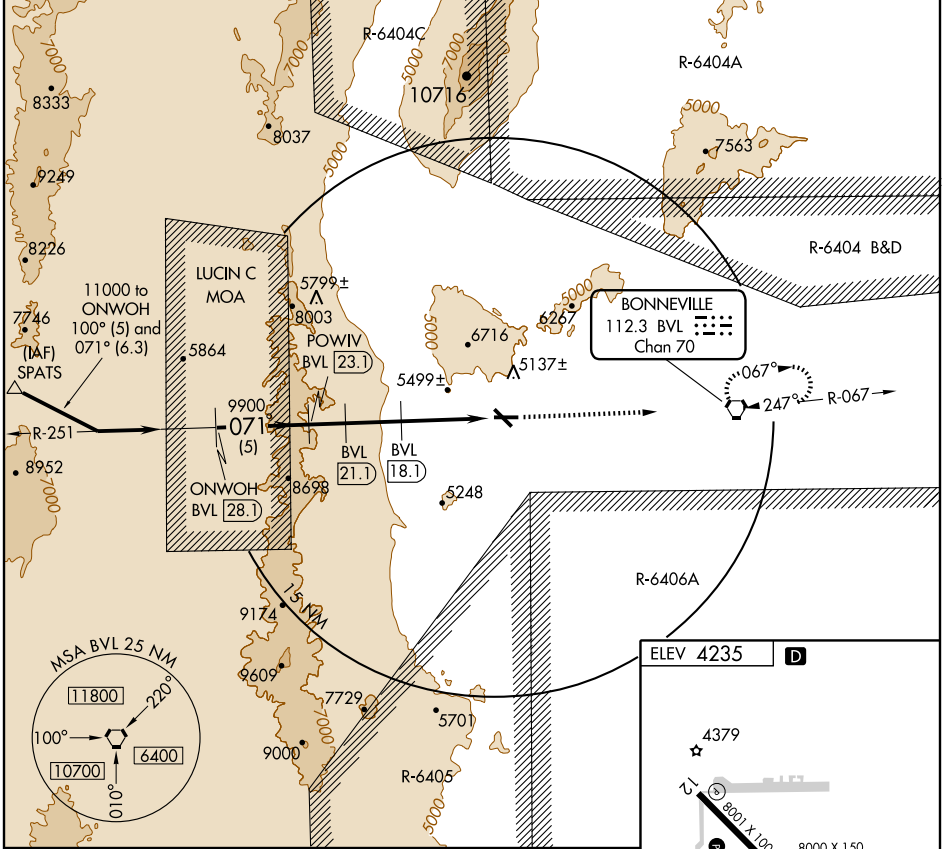
AL-445 (FAA)

VOR/DME-B
WENDOVER (ENV)

VORTAC BVL 112.3 Chan 70	APP CRS 071°	Rwy Idg TDZE Apt Elev 4235	N/A N/A
--	------------------------	--	------------

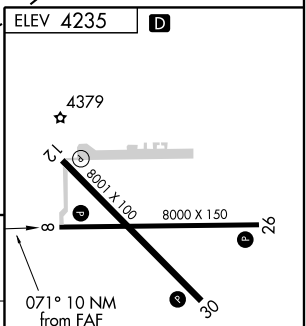
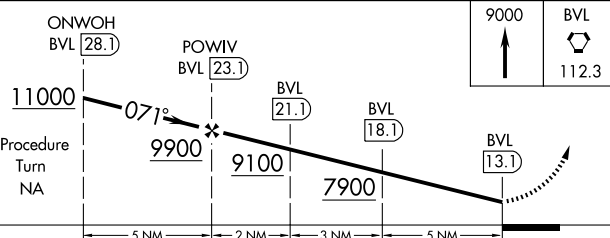
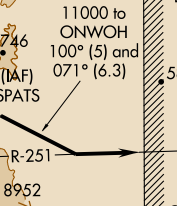
▼ Circling not authorized north of Rwy 8-26.
▲ MISSED APPROACH: Climb to 9000 direct BVL VORTAC and hold.

AWOS-3 135.075	CEDAR CITY RADIO 122.1R	UNICOM 122.8 (CTAF) 0
--------------------------	-----------------------------------	---------------------------------



SW-4, 22 OCT 2009 to 19 NOV 2009

SW-4, 22 OCT 2009 to 19 NOV 2009



CATEGORY	A	B	C	D	E
CIRCLING	5900-1¼ 1665 (1700-1¼)	5900-1½ 1665 (1700-1½)	5900-3	1665 (1700-3)	

REIL Rwys 8, 12 and 30
 MIRL Rwys 8-26 and 12-30

WENDOVER, UTAH
Orig-A 09295

40° 43'N-114° 02'W

WENDOVER (ENV)
VOR/DME-B