

WENDOVER, UTAH

AL-445 (FAA)

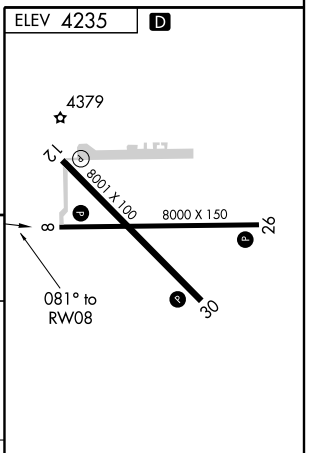
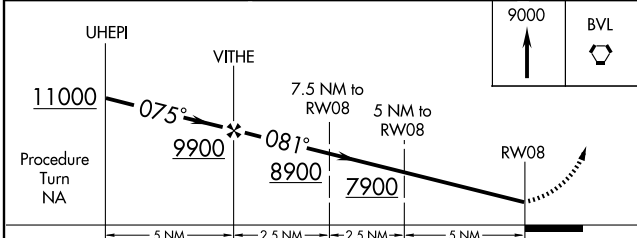
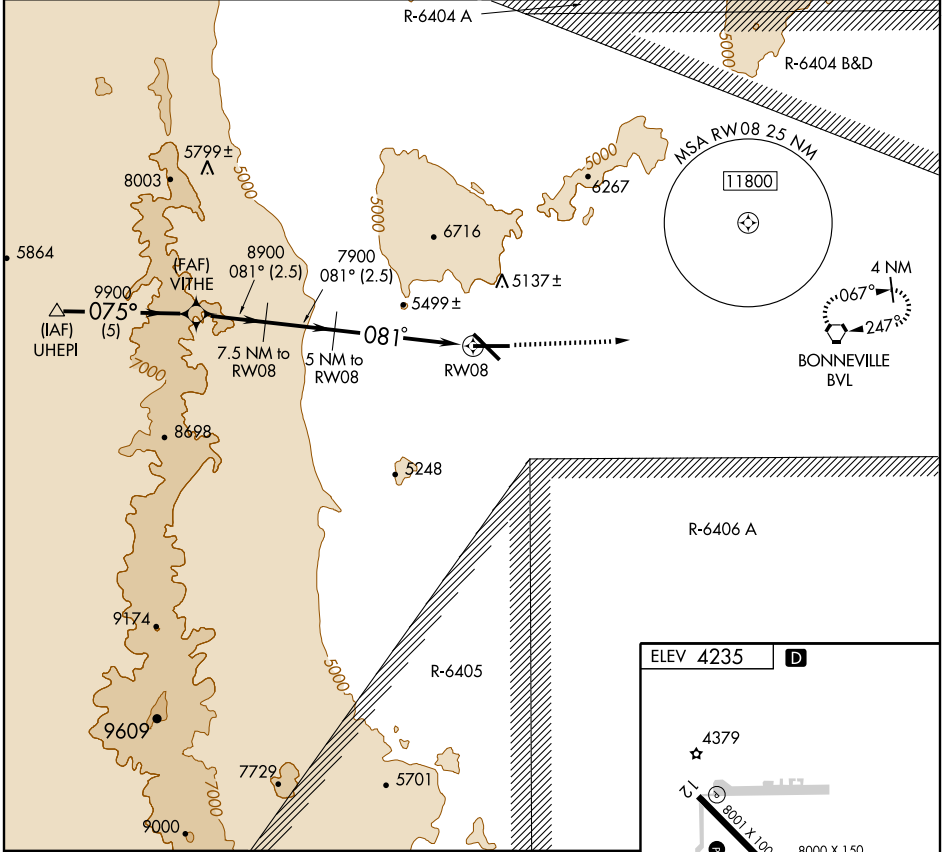
# RNAV (GPS)-A WENDOVER (ENV)

APP CRS <b>081°</b>	Rwy Idg TDZE Apt Elev	<b>N/A</b> <b>N/A</b> <b>4235</b>
------------------------	-----------------------------	---

**NA** Circling not authorized north of Rwy 8-26.  
GPS or RNP-0.3 required. DME/DME RNP-0.3 NA.

MISSED APPROACH: Climb to 9000 direct BVL VORTAC and hold.

AWOS-3 <b>135.075</b>	CEDAR CITY RADIO <b>122.1R</b>	UNICOM <b>122.8 (CTAF)</b>
--------------------------	-----------------------------------	-------------------------------



CATEGORY	A	B	C	D	E
CIRCLING	5900-1¼ 1665 (1700-1¼)	5900-1½ 1665 (1700-1½)	5900-3	1665 (1700-3)	

REIL Rws 8, 12 and 30  
MIRL Rws 8-26 and 12-30

SW-4, 22 OCT 2009 to 19 NOV 2009

SW-4, 22 OCT 2009 to 19 NOV 2009

WENDOVER, UTAH  
Orig 09295

40°43'N-114°02'W

## WENDOVER (ENV) RNAV (GPS)-A