

# RNAV (GPS) RWY 26

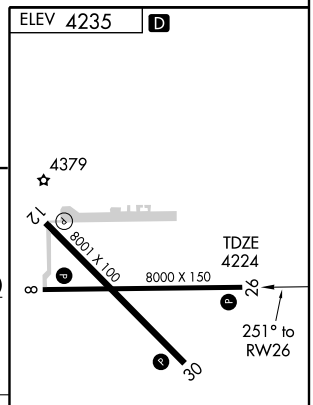
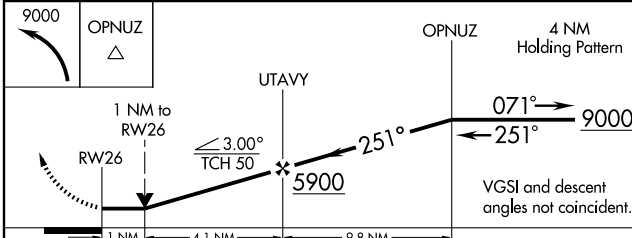
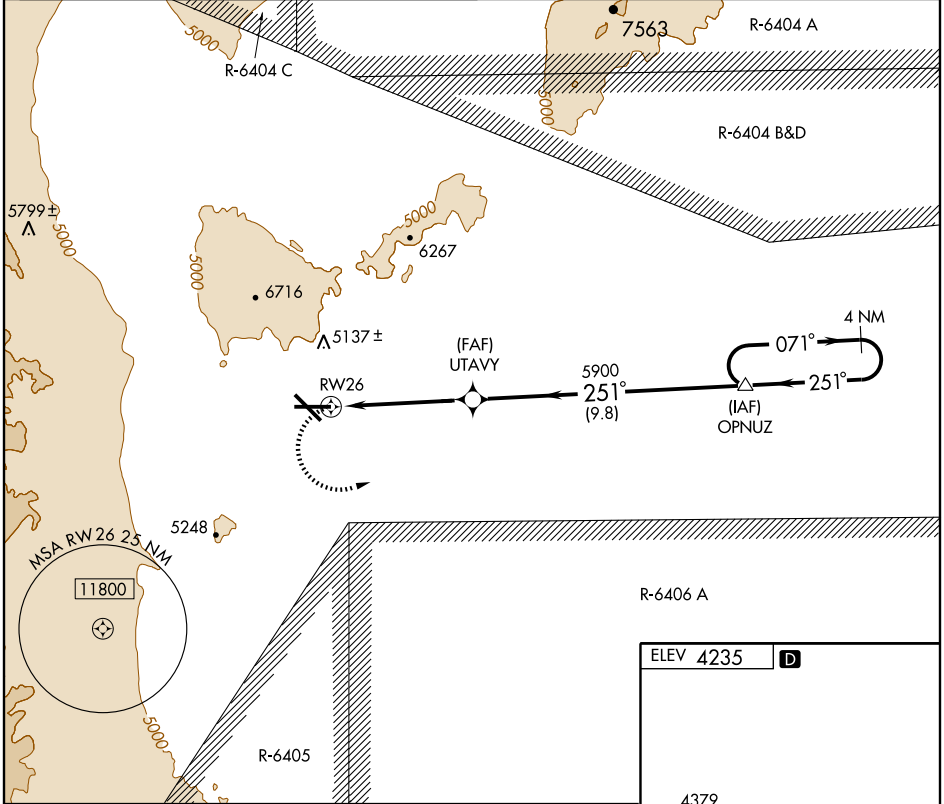
WENDOVER (ENV)

APP CRS	Rwy Idg	<b>8000</b>
<b>251°</b>	TDZE	<b>4224</b>
	Apt Elev	<b>4235</b>

**NA** Circling not authorized north of Rwy 8-26.  
GPS or RNP-0.3 required. DME/DME RNP-0.3 NA.

MISSED APPROACH: Climbing left turn to 9000 direct OPNUZ WP and hold.

AWOS-3 <b>135.075</b>	CEDAR CITY RADIO <b>122.1R</b>	UNICOM <b>122.8</b> (CTAF)
--------------------------	-----------------------------------	-------------------------------



CATEGORY	A	B	C	D	E
RNAV MDA	4580-1	356 (400-1)		4580-1¼ 356 (400-1¼)	4660-1½ 436 (500-1½)
CIRCLING	4640-1 405 (500-1)	4700-1 465 (500-1)	4700-1½ 465 (500-1½)	4800-2 565 (600-2)	5000-2¾ 765 (800-2¾)

REIL Rwy 8, 12 and 30  
MIRL Rwy 8-26 and 12-30

SW-4, 22 OCT 2009 to 19 NOV 2009

SW-4, 22 OCT 2009 to 19 NOV 2009