

WATERTOWN, SOUTH DAKOTA

AL-444 (FAA)

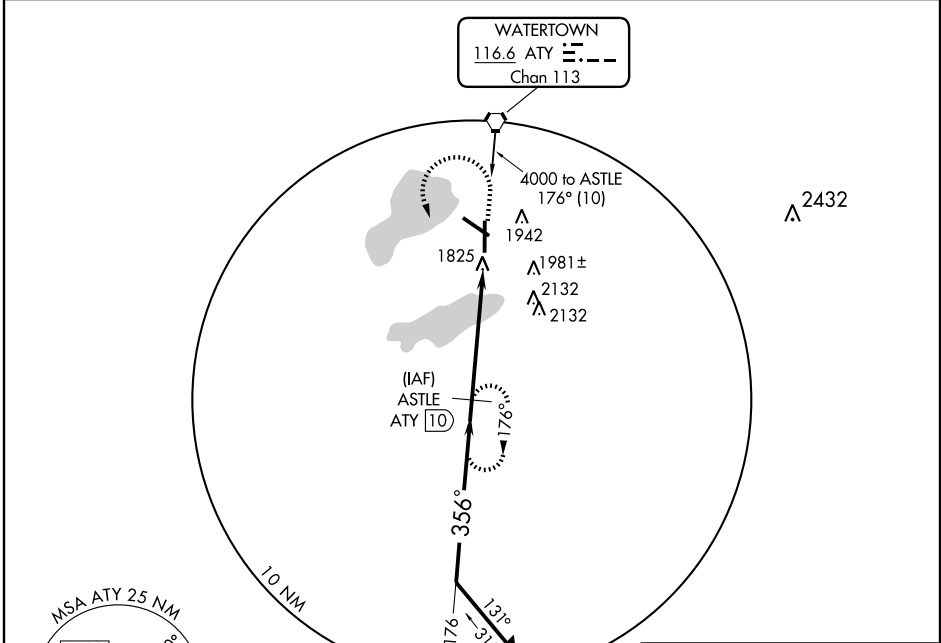
VOR/DME or TACAN RWY 35

WATERTOWN RGNL (ATY)

VORTAC ATY 116.6 Chan 113	APP CRS 356°	Rwy Idg TDZE Apt Elev	6894 1745 1749
--	------------------------	-----------------------------	---

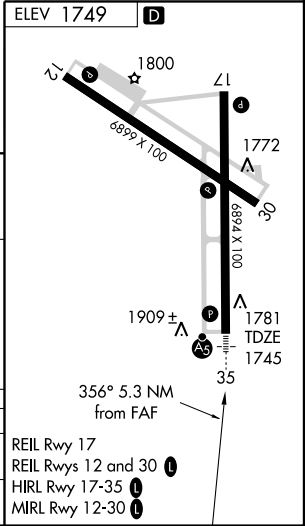
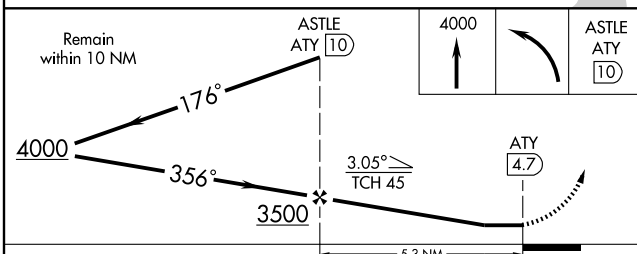
	MALSR 	MISSED APPROACH: Climb to 4000 then left turn direct ASTLE and hold.
	<p>ASOS 126.625</p> <p>MINNEAPOLIS CENTER 128.5 306.2</p> <p>UNICOM 123.05 (CTAF)</p>	

ASOS 126.625	MINNEAPOLIS CENTER 128.5 306.2	UNICOM 123.05 (CTAF)
------------------------	--	--------------------------------



NC-1, 22 OCT 2009 to 19 NOV 2009

NC-1, 22 OCT 2009 to 19 NOV 2009



CATEGORY	A	B	C	D
S-35	2240-½ 495 (500-½)		2240-¾ 495 (500-¾)	2240-1 495 (500-1)
CIRCLING	2260-1 511 (600-1)		2260-1½ 511 (600-1½)	2340-2 591 (600-2)

WATERTOWN, SOUTH DAKOTA
Amdt 11B 09295

44°55'N-97°09'W

WATERTOWN RGNL (ATY)

VOR/DME or TACAN RWY 35