

WAAS CH 82305 W17A	APP CRS 174°	Rwy Idg TDZE 1740 Apt Elev 1749	6894 1740 1749
--	------------------------	---	---

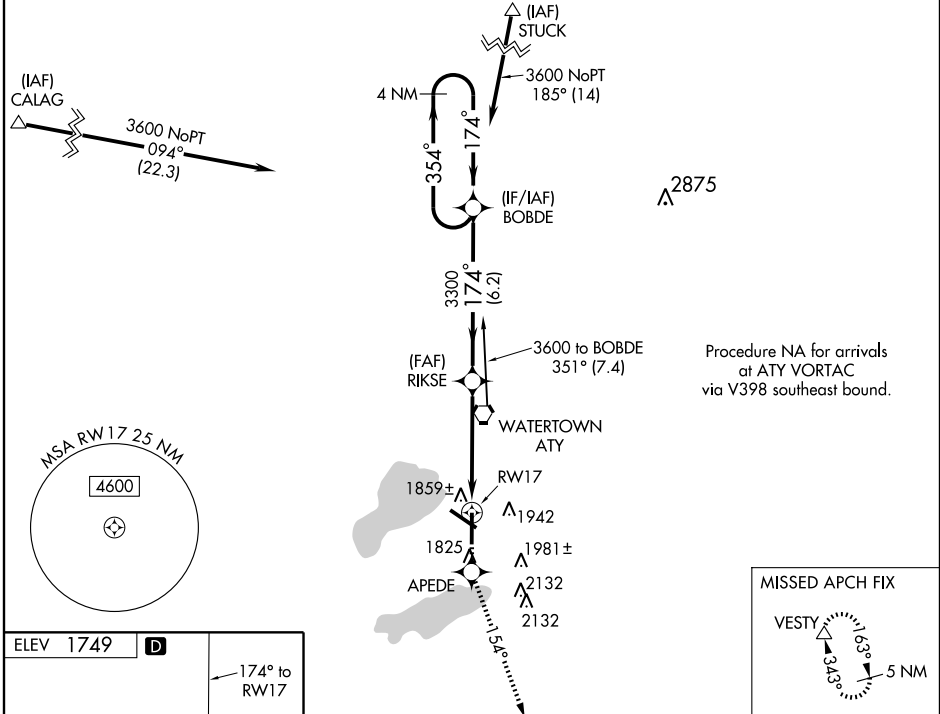
RNAV (GPS) RWY 17

WATERTOWN RGNL (ATY)

⚠ Baro-VNAV NA when using Brooking altimeter setting. DME/DME RNP-0.3 NA.
⚠ For uncompensated Baro-VNAV systems, LNAV/VNAV NA below -18°C (0°F) or above 45°C (113°F). VDP NA when using Brookings altimeter setting.
 If local altimeter setting not received, use Brookings altimeter setting and increase all DAs 105 feet and all MDAs 120 feet.

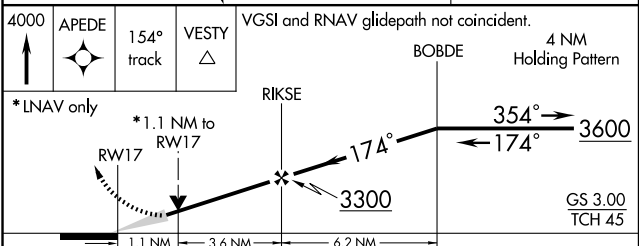
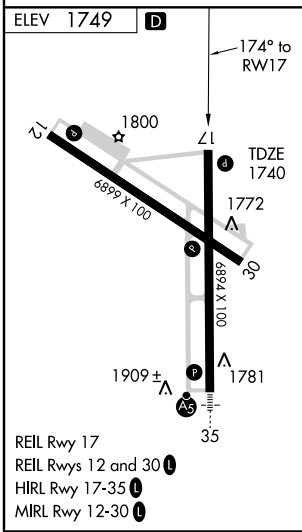
MISSED APPROACH: Climb to 4000 direct APEDE and via 154° track to VESTY and hold.

ASOS 126.625	MINNEAPOLIS CENTER 128.5 306.2	UNICOM 123.05 (CTAF) 0
------------------------	--	----------------------------------



NC-1, 22 OCT 2009 to 19 NOV 2009

NC-1, 22 OCT 2009 to 19 NOV 2009



CATEGORY	A	B	C	D
LPV DA	2054-1		314 (400-1)	
LNAV/VNAV DA	2129-1¼		389 (400-1¼)	
LNAV MDA	2120-1 380 (400-1)		2120-1¼ 380 (400-1¼)	
CIRCLING	2260-1 511 (600-1)		2260-1½ 511 (600-1½) 2340-2 591 (600-2)	