

RNAV (GPS) RWY 12

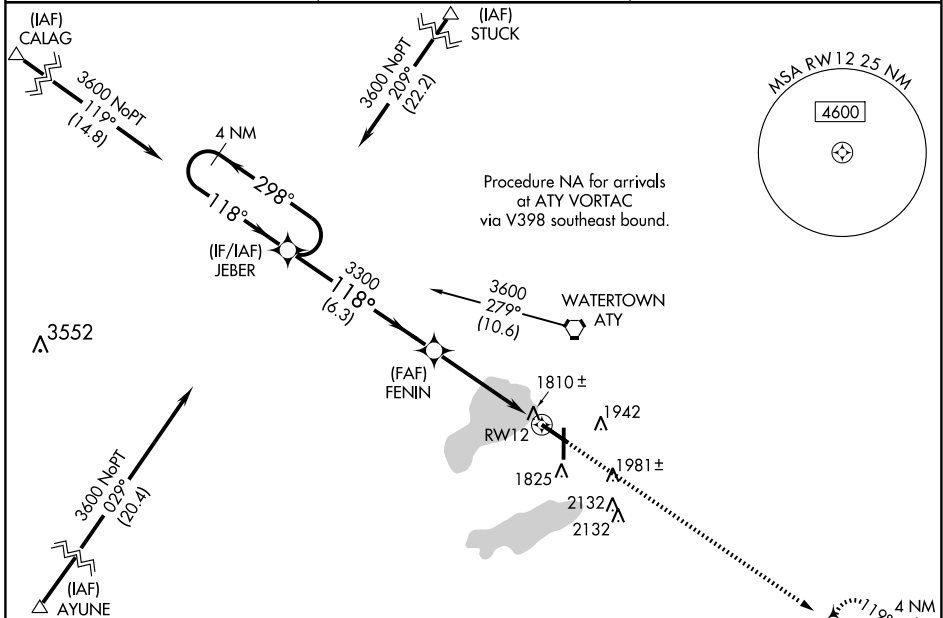
WATERTOWN RGNL (ATY)

WAAS CH 53405 W12A	APP CRS 118°	Rwy Idg TDZE Apt Elev	6899 1749 1749
--	------------------------	-----------------------------	---

⚠ For uncompensated Baro-VNAV systems, LNAV/VNAV NA below -18°C (0°F) or above 45°C (113°F). DME/DME RNP -0.3 NA. Visibility reduction by helicopters NA. If local altimeter setting not received, use Brookings altimeter setting and increase all DAs 105 feet and all MDAs 120 feet. VDP NA when using Brookings altimeter setting. Baro-VNAV NA when using Brookings altimeter setting.

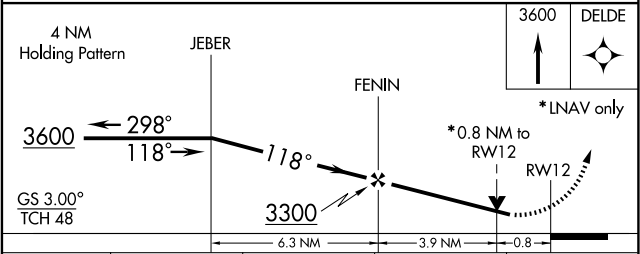
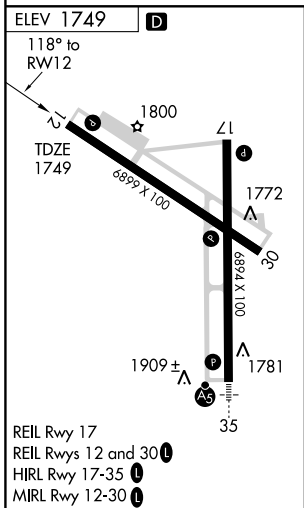
MISSED APPROACH:
Climb to 3600 direct DELDE and hold.

ASOS 126.625	MINNEAPOLIS CENTER 128.5 306.2	UNICOM 123.05 (CTAF) 0
------------------------	--	----------------------------------



NC-1, 22 OCT 2009 to 19 NOV 2009

NC-1, 22 OCT 2009 to 19 NOV 2009



CATEGORY	A	B	C	D
LPV DA		2021-1	272 (300-1)	
LNAV/VNAV DA		2076-1¼	327 (400-1¼)	
LNAV MDA		2060-1	311 (400-1)	
CIRCLING	2260-1	511 (600-1)	2260-1½ 511 (600-1½)	2340-2 591 (600-2)